

RIDGID

1993-1994 Calendar



RIDGID®

Pre-Tested Work Saver® Tools



January 1993

S	M	T	W	T	F	S
					1	2
3	4	5	6	7	8	9
10	11	12	13	14	15	16
17	18	19	20	21	22	23
24/31	25	26	27	28	29	30

February 1993

S	M	T	W	T	F	S
	1	2	3	4	5	6
7	8	9	10	11	12	13
14	15	16	17	18	19	20
21	22	23	24	25	26	27
28						

The RIDGID 1822-I features automatic chucking, quiet induction motor, two-speed transmission and many other features designed for increased productivity, including a maneuverable folding wheel stand.

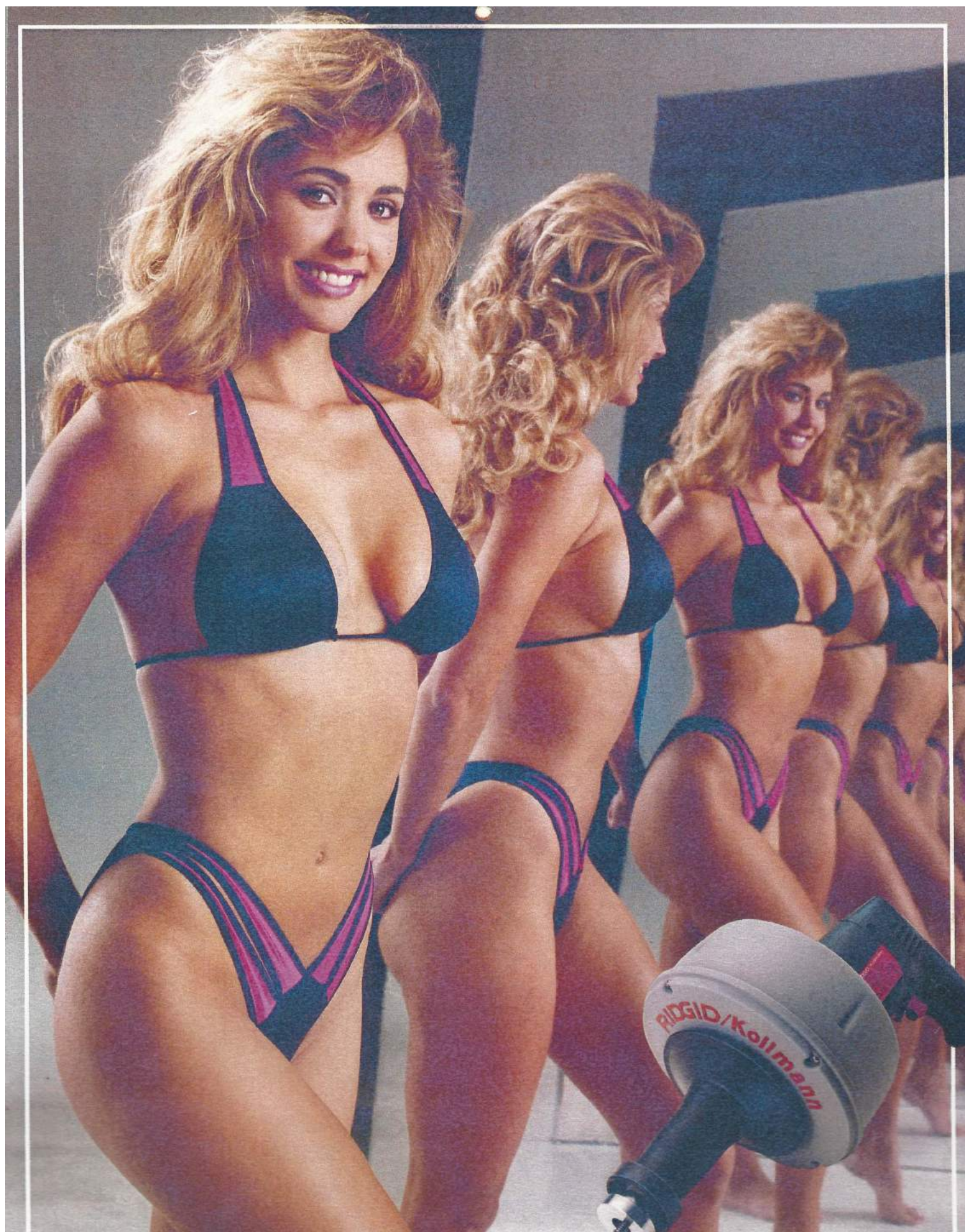
Product: RIDGID 1822-I Threading Machine

Model: Colleen O'Brien — Photographed at the Gowland Studios, Santa Monica, California by Peter Gowland



Colleen O'Brien, 1991/1992 Miss RIDGID

Ridge Tool Company
400 Clark Street
Elyria, Ohio 44036-2023 U.S.A.



RIDGID®

Kollmann

Pipe and Drain Cleaning Equipment



RIDGID/Kollmann drain guns clear stoppages in small bore pipes and drains. Special features coupled with mains or cordless availability enable blockages to be removed quickly and efficiently.

Product: RIDGID/Kollmann K-38 Drain Gun

Model: Bobbie Phillips — Photographed in The House of Mirrors, Santa Monica, California by Peter Gowland



March 1993

S	M	T	W	T	F	S
	1	2	3	4	5	6
7	8	9	10	11	12	13
14	15	16	17	18	19	20
21	22	23	24	25	26	27
28	29	30	31			

April 1993

S	M	T	W	T	F	S
				1	2	3
4	5	6	7	8	9	10
11	12	13	14	15	16	17
18	19	20	21	22	23	24
25	26	27	28	29	30	

Your RIDGID Distributor warehouses for you; saves you capital, insurance, overhead.

Ridge Tool Company
400 Clark Street
Elyria, Ohio 44036-2023 U.S.A.



RIDGID®

Pre-Tested Work Saver® Tools



RIDGID products built for over 60 years by professionals have become the standard by which other tools are judged. RIDGID pipe working tools and work holding devices deliver long lasting and quality performance.

Product: RIDGID 40A Tristand Yoke Vise

Model: Lisa Coles —
Photographed at The Hillmont Mansion, Pasadena, California
by Peter Gowland



May 1993

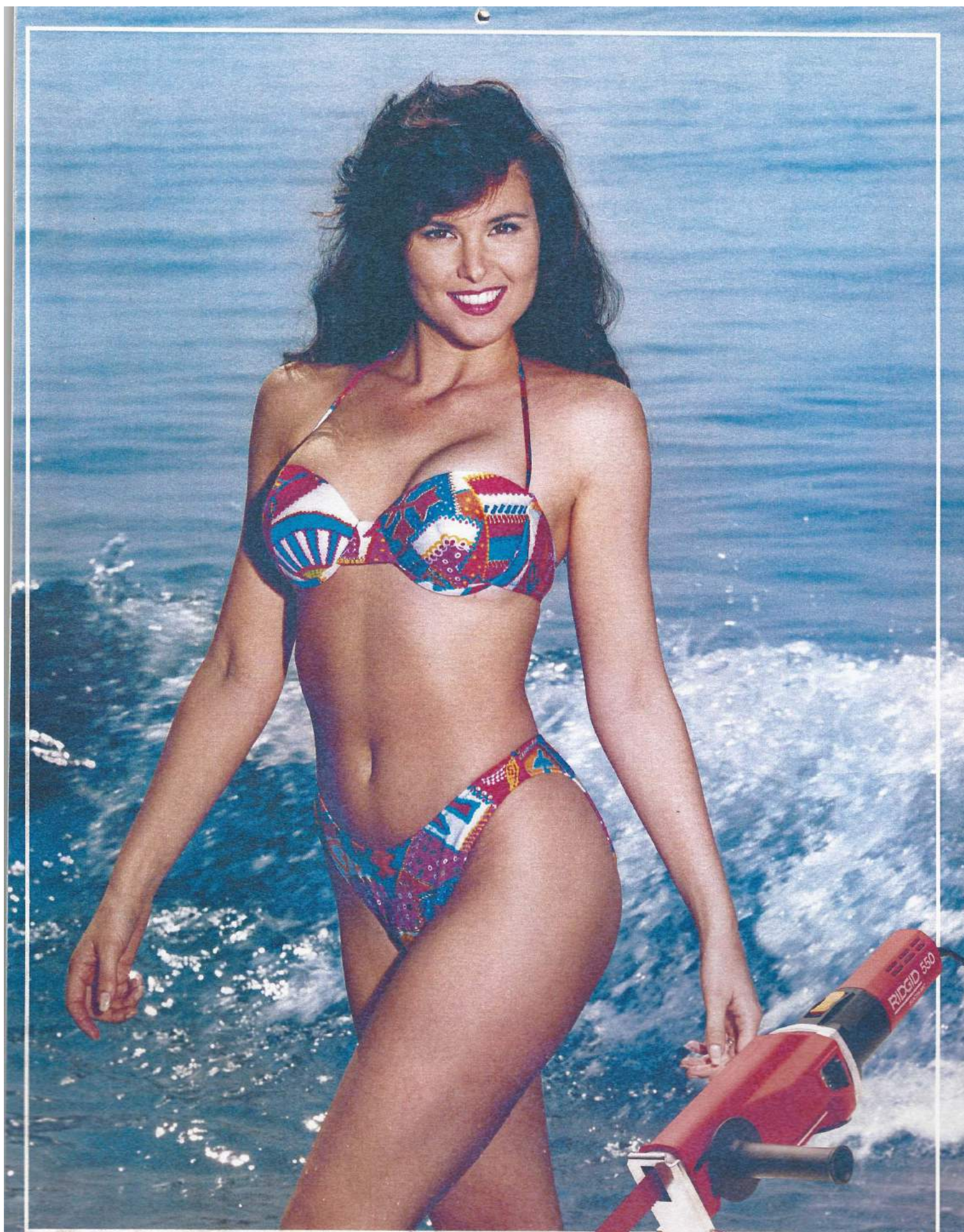
S	M	T	W	T	F	S
						1
2	3	4	5	6	7	8
9	10	11	12	13	14	15
16	17	18	19	20	21	22
23/30	24/31	25	26	27	28	29

June 1993

S	M	T	W	T	F	S
		1	2	3	4	5
6	7	8	9	10	11	12
13	14	15	16	17	18	19
20	21	22	23	24	25	26
27	28	29	30			

Your RIDGID Distributor brings technical aid to your staff, to simplify and solve problems.

Ridge Tool Company
400 Clark Street
Elyria, Ohio 44036-2023 U.S.A.



RIDGID®

Pre-Tested Work Saver® Tools



RIDGID power tools are designed to meet the needs of the professional user. From cordless and heavy duty drills to circular saws and band saws. RIDGID products are designed to give years of trouble free service.

Product: RIDGID No. 550 Pipe Cut Off Saw

Model: Alison Rhea —
Photographed at Malibu Beach,
California by Peter Gowland



July 1993

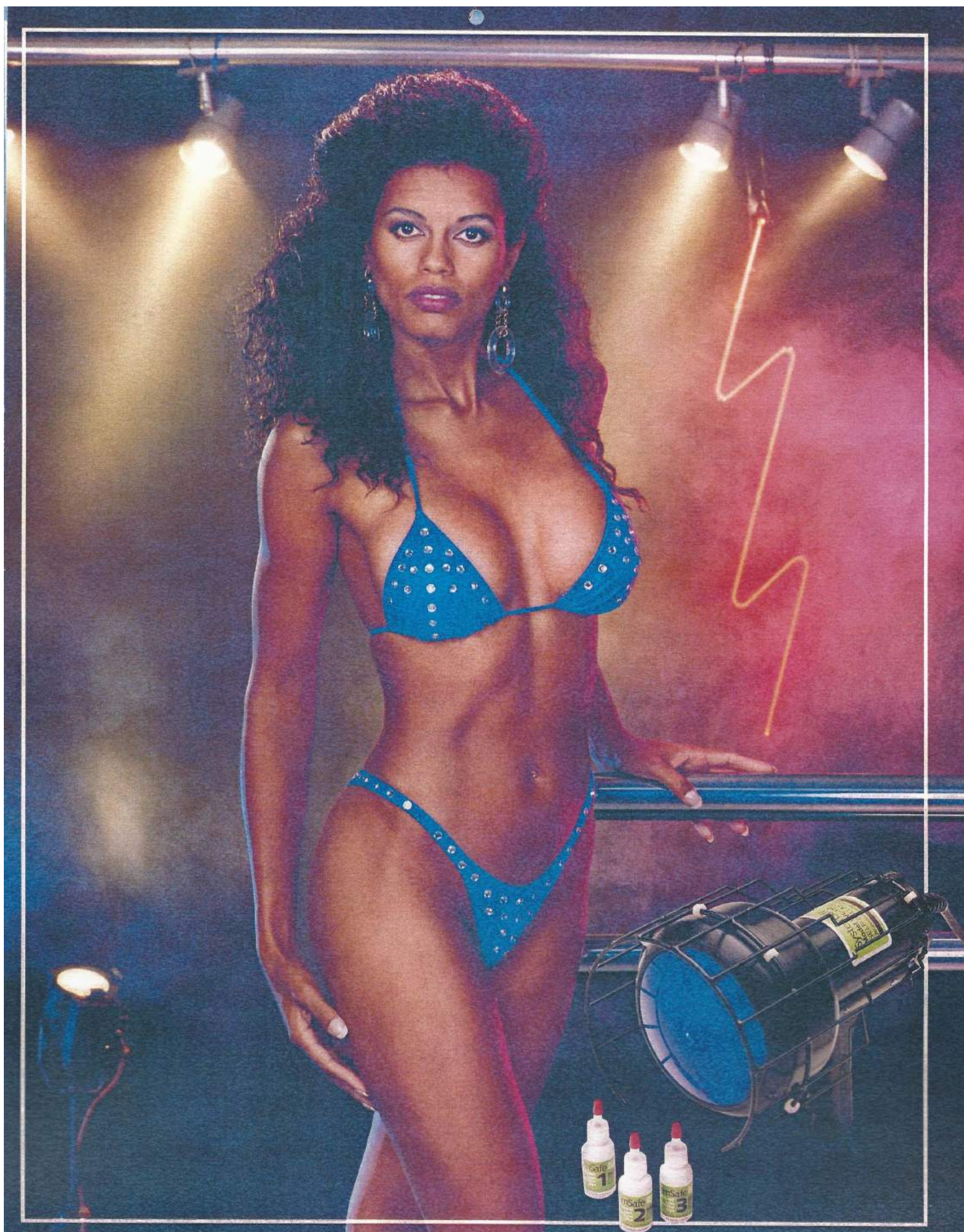
S	M	T	W	T	F	S
				1	2	3
4	5	6	7	8	9	10
11	12	13	14	15	16	17
18	19	20	21	22	23	24
25	26	27	28	29	30	31

August 1993

S	M	T	W	T	F	S
1	2	3	4	5	6	7
8	9	10	11	12	13	14
15	16	17	18	19	20	21
22	23	24	25	26	27	28
29	30	31				

Your RIDGID Distributor simplifies your record-keeping—one billing for your multitude of needs.

Ridge Tool Company
400 Clark Street
Elyria, Ohio 44036-2023 U.S.A.



RIDGID®

Pre-Tested Work Saver® Tools



September 1993

S	M	T	W	T	F	S
			1	2	3	4
5	6	7	8	9	10	11
12	13	14	15	16	17	18
19	20	21	22	23	24	25
26	27	28	29	30		

October 1993

S	M	T	W	T	F	S
					1	2
3	4	5	6	7	8	9
10	11	12	13	14	15	16
17	18	19	20	21	22	23
24/31	25	26	27	28	29	30

SystemSafe leak detection equipment makes finding leaks fast and accurate. Whether you are an HVAC/R contractor or building manager, RIDGID SystemSafe can save you time and money.

Product: RIDGID SystemSafe Fluorescent Leak Detection equipment

Model: Patricia Mathews — Photographed at Studio Disco, Santa Monica, California by Peter Gowland

Your RIDGID Distributor keeps your overhead down because he has what you need, when you need it.

Ridge Tool Company
400 Clark Street
Elyria, Ohio 44036-2023 U.S.A.



RIDGID®

Pre-Tested Work Saver® Tools



RIDGID Models 916 and 918 Roll Groovers are designed for use in the field or shop. The 916 attaches to the Model 300 Power Drive, while the Model 918 hydraulic unit can be quickly mounted on the 300 Power Drive, 1822 and 1224 Threading Machines.

Product: RIDGID 918 Roll Groover

Model: Kimberlee Bolinger — Photographed at the Gowland Studios, Santa Monica, California by Peter Gowland



November 1993

S	M	T	W	T	F	S
	1	2	3	4	5	6
7	8	9	10	11	12	13
14	15	16	17	18	19	20
21	22	23	24	25	26	27
28	29	30				

December 1993

S	M	T	W	T	F	S
			1	2	3	4
5	6	7	8	9	10	11
12	13	14	15	16	17	18
19	20	21	22	23	24	25
26	27	28	29	30	31	

Your RIDGID Distributor buys from hundreds of suppliers, so you can buy from just one.

Ridge Tool Company
400 Clark Street
Elyria, Ohio 44036-2023 U.S.A.



RIDGID®

Kollmann

Pipe and Drain Cleaning Equipment



RIDGID/Kollmann Water Jetters are powered by electric or gas motors and are designed to power scrub drains clean. Blasting their way through soap, sludge, and grease, flushing the debris down the line and power scrubbing the line clean, restoring their full free flowing capacity.

Product: RIDGID/Kollmann KJ-1250 Water Jetter

Model: Trisha Mares —
Photographed at Rustic Canyon,
California by Peter Gowland



January 1994

S	M	T	W	T	F	S
						1
2	3	4	5	6	7	8
9	10	11	12	13	14	15
16	17	18	19	20	21	22
23/30	24/31	25	26	27	28	29

February 1994

S	M	T	W	T	F	S
		1	2	3	4	5
6	7	8	9	10	11	12
13	14	15	16	17	18	19
20	21	22	23	24	25	26
27	28					

See your RIDGID Distributor for the complete line of RIDGID tools.

Ridge Tool Company
400 Clark Street
Elyria, Ohio 44036-2023 U.S.A.



RIDGID®

Pre-Tested Work Saver® Tools



RIDGID Threading Machines are designed to provide long and dependable service at the job site. Nothing reflects pipe working skills better than finished threads. So protect yourself by buying the industry's best — RIDGID Threading Machines, Dies and Oil.

Product: RIDGID 1233 Threading Machine

Model: Anita Hart — Photographed at The Summit, Pacific Palisades Highlands, California by Peter Gowland



March 1994

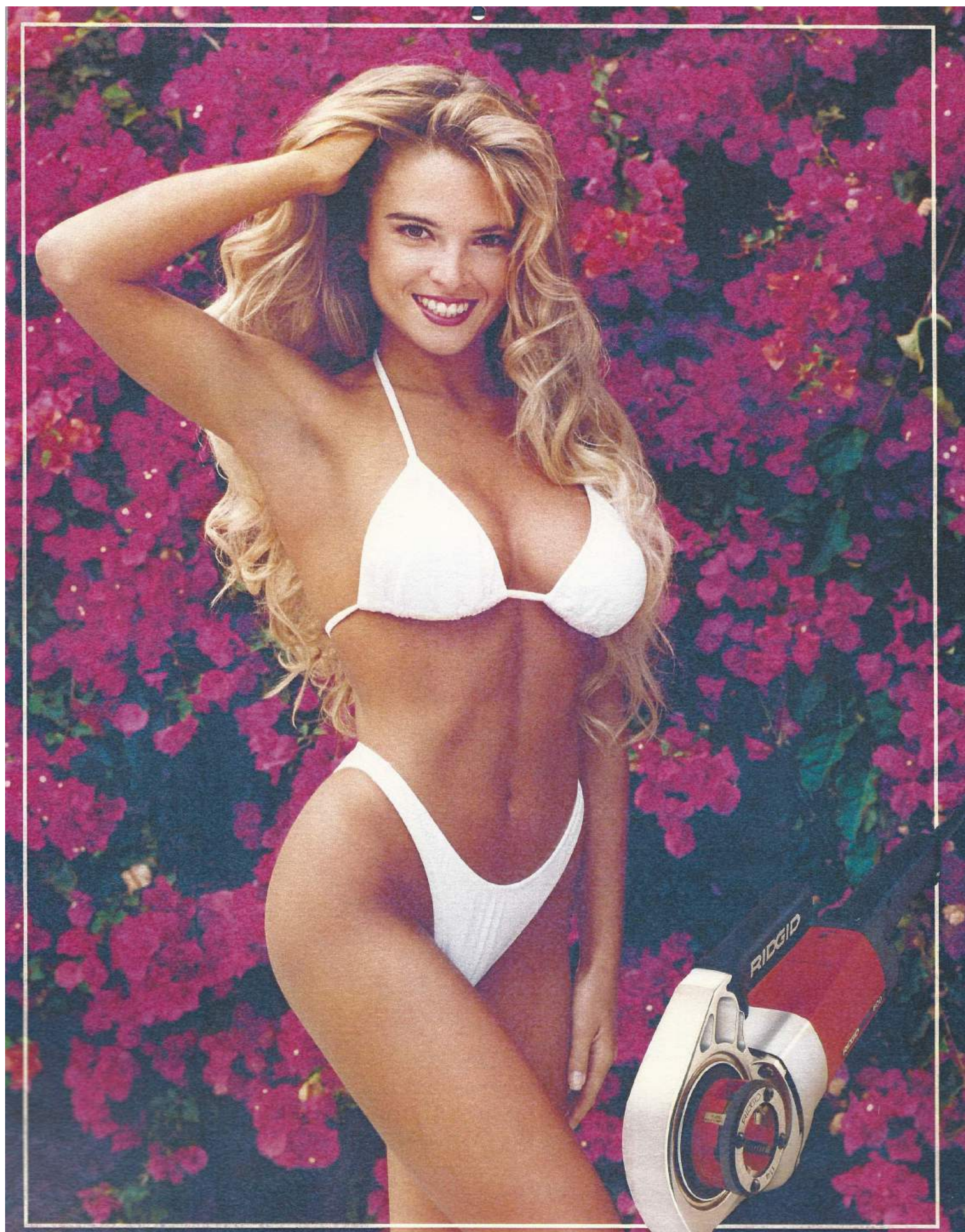
S	M	T	W	T	F	S
		1	2	3	4	5
6	7	8	9	10	11	12
13	14	15	16	17	18	19
20	21	22	23	24	25	26
27	28	29	30	31		

April 1994

S	M	T	W	T	F	S
					1	2
3	4	5	6	7	8	9
10	11	12	13	14	15	16
17	18	19	20	21	22	23
24	25	26	27	28	29	30

Your RIDGID Distributor guarantees your buying power with hundreds of suppliers.

Ridge Tool Company
400 Clark Street
Elyria, Ohio 44036-2023 U.S.A.



RIDGID®

Pre-Tested Work Saver® Tools



May 1994

S	M	T	W	T	F	S
1	2	3	4	5	6	7
8	9	10	11	12	13	14
15	16	17	18	19	20	21
22	23	24	25	26	27	28
29	30	31				

June 1994

S	M	T	W	T	F	S
			1	2	3	4
5	6	7	8	9	10	11
12	13	14	15	16	17	18
19	20	21	22	23	24	25
26	27	28	29	30		



Designed as an alternative to hand threading or as a light-weight solution to heavy equipment on the job, a RIDGID portable power drive provides extra muscle where and when you need it. Saving time, money and effort.

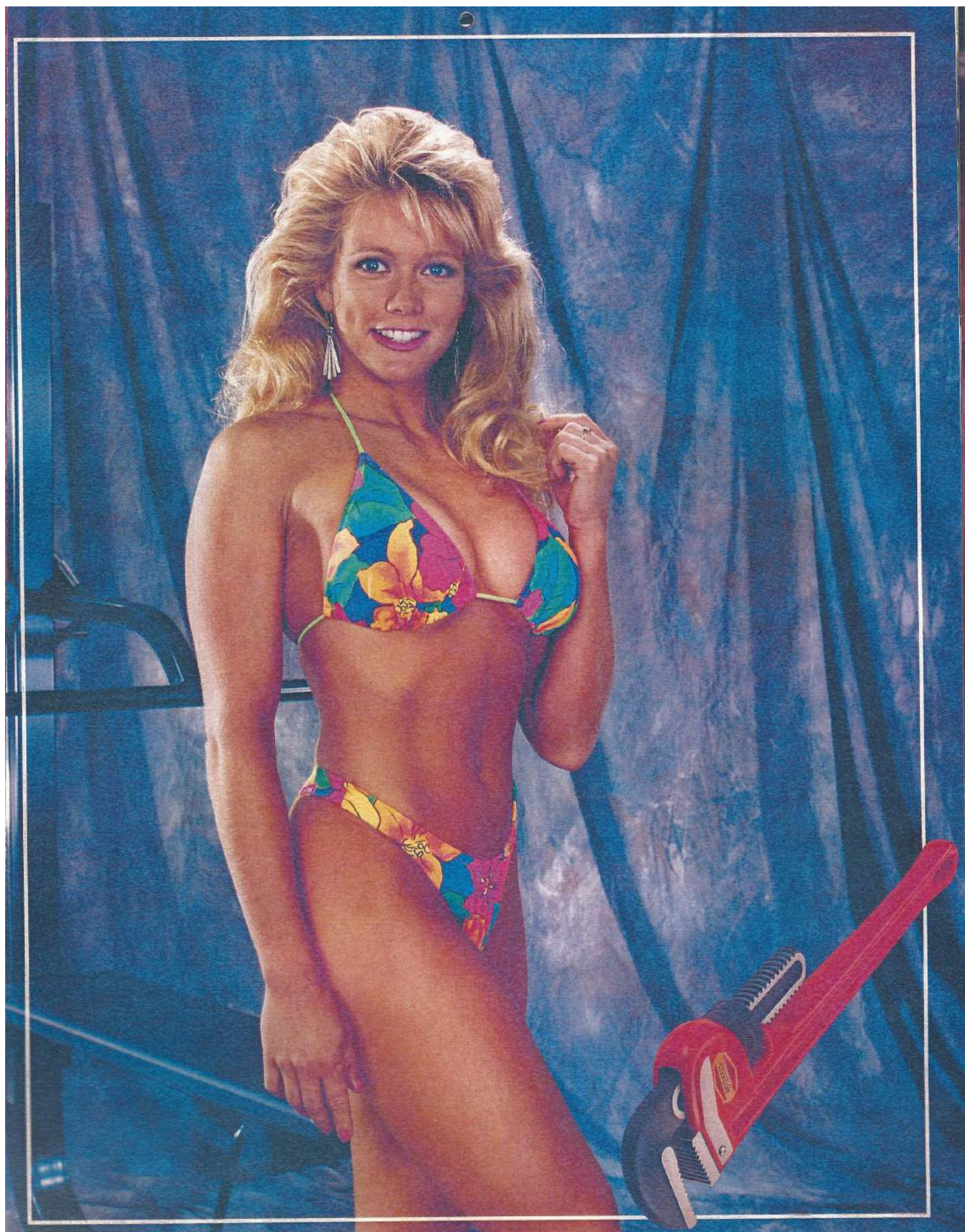
Product: RIDGID 600 Power Drive

Model: Darshell Stephens — Photographed in Malibu, California by Peter Gowland



Your RIDGID Distributor helps get you back in business fast when you need parts or service.

Ridge Tool Company
400 Clark Street
Elyria, Ohio 44036-2023 U.S.A.



RIDGID®

Pre-Tested Work Saver® Tools



RIDGID pipe wrenches are matchless in quality, durability, and are the overwhelming choice of professionals the world over. RIDGID pipe wrenches are backed by a lifetime warranty against defects in material and workmanship.

Product: RIDGID Heavy Duty Pipe Wrench

Model: Natalie Lennox — Photographed at Canyon Spa, Santa Monica, California by Peter Gowland. Equipment by Soloflex Inc.



July 1994

S	M	T	W	T	F	S
					1	2
3	4	5	6	7	8	9
10	11	12	13	14	15	16
17	18	19	20	21	22	23
24/31	25	26	27	28	29	30

August 1994

S	M	T	W	T	F	S
	1	2	3	4	5	6
7	8	9	10	11	12	13
14	15	16	17	18	19	20
21	22	23	24	25	26	27
28	29	30	31			

Your RIDGID Distributor is your up-to-date source on the latest technical developments.

Ridge Tool Company
400 Clark Street
Elyria, Ohio 44036-2023 U.S.A.



RIDGID®

Pre-Tested Work Saver® Tools



When cutting, reaming, flaring, bending, soldering or brazing, RIDGID tubing tools do the job quickly and accurately. The RIDGID line of tubing tools is ideal for projects where accuracy and dependability is a must.

Product: RIDGID No. 458 Flaring Tool

Model: Eloise Broady —
Photographed in Santa Monica,
California by Peter Gowland



September 1994

S	M	T	W	T	F	S
				1	2	3
4	5	6	7	8	9	10
11	12	13	14	15	16	17
18	19	20	21	22	23	24
25	26	27	28	29	30	

October 1994

S	M	T	W	T	F	S
						1
2	3	4	5	6	7	8
9	10	11	12	13	14	15
16	17	18	19	20	21	22
23/30	24/31	25	26	27	28	29

Your RIDGID Distributor manages traffic so
you get the goods on time, at least cost.

Ridge Tool Company
400 Clark Street
Elyria, Ohio 44036-2023 U.S.A.



RIDGID®

Kollmann

Pipe and Drain Cleaning Equipment



RIDGID/Kollmann K-375 and K-750 Drum Machines muscle their way through tough blockages. Both feature tough, corrosion resistant drums which are designed for quick removal. Inner-core cable transfers cutting power to obstructions.

Product: RIDGID/Kollmann K-750 Drain Cleaner

Model: Teri LaVerne —
Photographed at Will Rogers
State Beach, Los Angeles,
California by Peter Gowland



November 1994

S	M	T	W	T	F	S
		1	2	3	4	5
6	7	8	9	10	11	12
13	14	15	16	17	18	19
20	21	22	23	24	25	26
27	28	29	30			

December 1994

S	M	T	W	T	F	S
				1	2	3
4	5	6	7	8	9	10
11	12	13	14	15	16	17
18	19	20	21	22	23	24
25	26	27	28	29	30	31

Your RIDGID Distributor keeps you competitive with the latest products for your industry.

Ridge Tool Company
400 Clark Street
Elyria, Ohio 44036-2023 U.S.A.

RIDGID

Our History

In 1923, in a small building in North Ridgeville, Ohio, Carl Ingwer Sr., William Thewes and Arthur Smith began the manufacture of their new-style RIDGID wrench. Starting out with fewer than 80 employees, they designed and produced a new, heavy-duty pipe wrench that had the quality, strength and endurance demanded by the hand tool market. But even with the men's perseverance, they went through a decade of intense competition in order to carve a place for their wrench in a market then dominated by the Stillson wrench.

Throughout its early years, Ridge Tool produced an ever-increasing range of hand tools for the pipe working industry. Each tool was conceived and produced with the user in mind, resulting in the line of "Prestressed Work-Saver Tools."

During the 1940s, Ridge Tool sensed a need for even greater productivity in the area of thread cutting. As a result, the company designed the first power drive for threading pipe in conjunction with hand threaders. Eventually, it developed a complete machine for the preparation and threading of pipe.

Ridge Tool Today

Ridge Tool's world headquarters in Elyria, Ohio accommodates approximately 1,000 employees. It presently covers over 650,000 square feet of working space under one roof, on over 26 acres of land. And, it's still expanding!

On an international level, Ridge Tool now sells its products in 130 different countries. An integral part of Ridge's international marketing policy has been the positioning of its overseas manufacturing divisions, warehousing and representation in strategic areas of the world. Throughout its 67 years in the tool manufacturing business, Ridge Tool and its product lines have grown steadily.

In addition to the main plant in Elyria, Ohio, other Ridge Tool facilities include the Urick Foundry in Erie, Pennsylvania. The RIDGID/Kollmann Division, in Orange, Virginia, produces pipe and drain cleaning equipment. And, Ridge maintains international manufacturing divisions in Cork, Ireland, St. Truiden, Belgium, and Sao Paulo, Brazil, with warehousing facilities throughout the world.

Best - Cost Producer

The goal of Ridge Tool's "Best-Cost Producer" strategy is to meet the challenge of global competition as the quality manufacturer with the lowest relevant costs. This strategy consists of six elements:

- Dedication to quality
- Knowledge of competitors' costs
- Focused manufacturing strategy
- Formalized cost reduction programs
- Effective communications
- Commitment to capital expenditures for productivity



The spacious entrance lobby at Ridge Tool features a visitor reception/meeting area.



Ridge Tool plants in Cork, Ireland and St. Truiden, Belgium are typical of the worldwide investment made by Ridge.



The RIDGID 600 Series Power Drive satisfies the demand for lightweight, portable power tools.



Visitors can see a variety of RIDGID products in our well-lit display area.



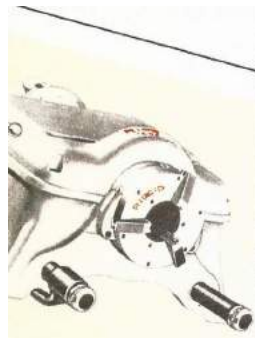
Ridge's 1940s manufacturing facility in North Ridgeville, Ohio.

Ridge Tool/Elyria is the foundation on which all other groups within the company are built.



Warehousing facilities and distribution centers are strategically positioned throughout the world to better serve Ridge customers.

Full engineering and research are conducted at Ridge's extensive R & D Center.



In the late 1940s, Ridge Tool offered an alternative to hand threading by introducing the 400 Power Drive.



The 918 Roll Groover is ideal for one man set up and operation on the job site or in the shop.



Seeing a need for a complete pipe reaming/threading/cutting system, Ridge developed the Model 500 Series Threading Machine.



Ridge's extensive CAD/CAM program and facility gives the company state-of-the-art design capabilities.

Best-Cost Producer demands management commitment to build work environments receptive to productivity and change. Effective communications are essential for successful implementation of targets, ideas and ongoing cost reduction programs.

Implementation of this strategy has resulted in a revitalization of Ridge's product engineering, quality and manufacturing functions. In the past five years, Ridge has redesigned its entire line of pipe working tools and equipment, and upgraded manufacturing processes to include state-of-the-art technology. Computer-controlled process equipment is used to produce the highest quality product in the industry.

Product Development

Ridge Tool realized that, in order for the Company to grow and prosper, it would require a broader market base than the heavy-duty pipe wrench could offer. It was, therefore, directed that much of the Company's profits be spent on the purchase of new manufacturing equipment and the development of other hand tools. The investment began to pay off, and in 1943, the Company moved to its present site in Elyria, Ohio.

Today, The Ridge Tool Company is the world's leading manufacturer of pipe working equipment used in a professional capacity. Although most people continue to associate the RIDGID brand name with pipe wrenches, the Company makes over 300 different types of tools in more than 4,000 models and sizes.

From the beginning, product quality has been the reason for the success of RIDGID hand and power tools. With this in mind, the Company has tried to produce in-house as many components of the finished product as possible to assure consistent high quality.

Consistent with its effort to supply the best and broadest selection of tools on the market, the Engineering Department of Ridge Tool has developed a wide range of innovative and unique tools — many times, at the request of customers.

In the mid-1960s, Ridge expanded its product line, to include drain cleaning equipment, through the acquisition of The Kollmann Company. Today, the RIDGID/Kollmann brand of drain cleaning equipment is the most recognized name in the world.

Targeting Our Markets

For many years, The Ridge Tool Company has implemented a marketing strategy which has made it a leading trade magazine advertiser in this era. The Company believes in consistent advertising and aggressive sales support programs to keep its products and the RIDGID name before the buying public. Ridge Tool has also invested heavily in training programs to teach end users throughout the world the proper use of its tools. Such efforts also make it easier for distributors to sell RIDGID products. The current trade show schedule calls for participation in well over 100 shows and exhibits worldwide.

The ongoing computerization, modernization and expansion of facilities, equipment and products point to a healthy and stable economic environment at Ridge. The Company takes pride in its past accomplishments. In the past five years, the percentage of new product sales has increased tenfold. And it looks like it will be increasing even more in the years to come, both at home and abroad.

enables Ridge to follow a best-cost producer strategy.



Automated capabilities at the Ridge Urick foundry permit high-volume production of superior-quality castings.

Being a best-cost producer involves highly automated methods to produce high-volume, high-quality castings.



Ridge makes available a wide array of sales literature, from envelope stuffers to full-color posters.

Distributed since 1935, the Ridge Tool calendar has become an institution throughout the world.

Ridge attends many international trade shows worldwide, including the Cologne Fair (shown here in West Germany).

