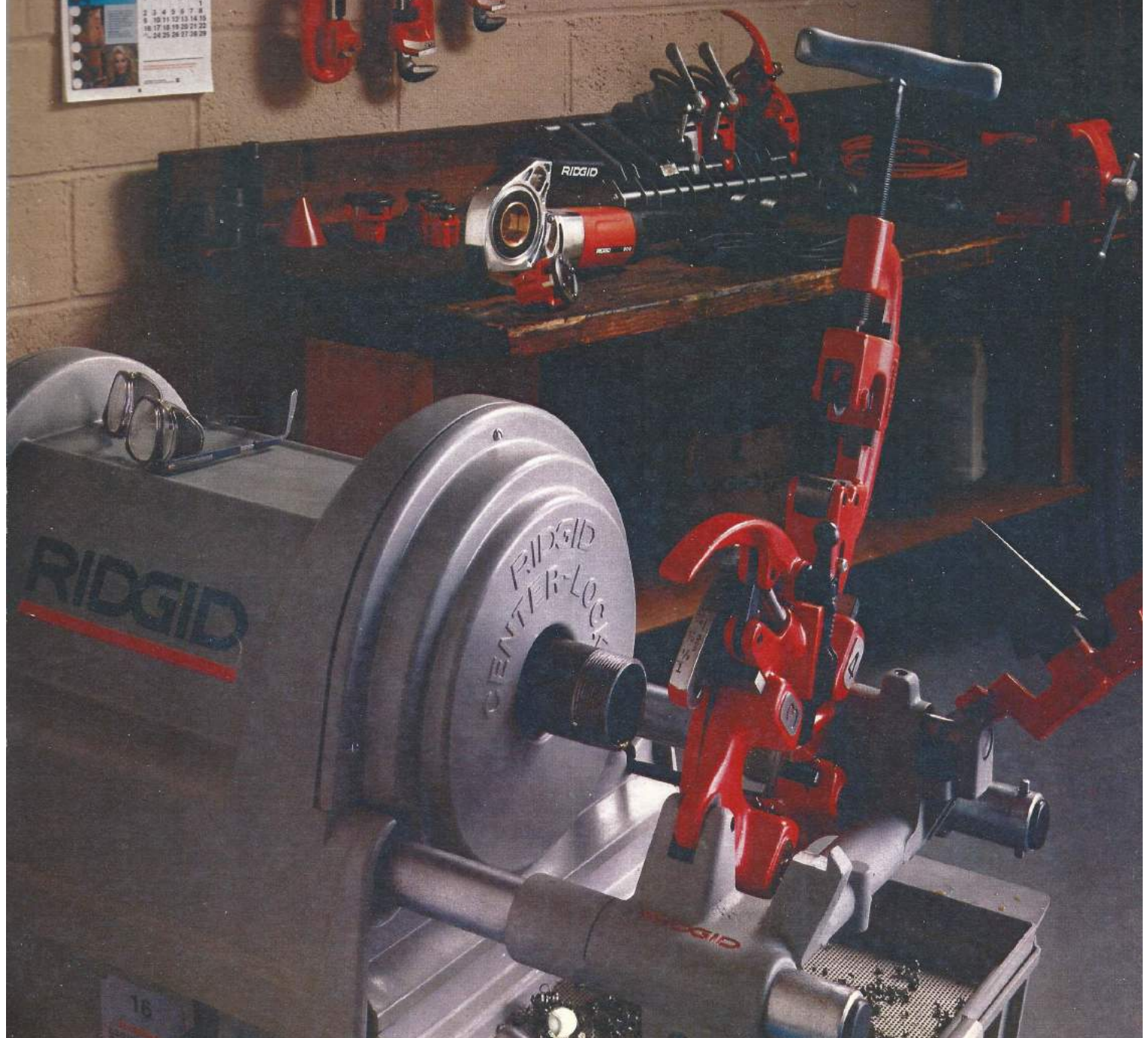


1989-1990  
**RIDGID®**

**Pin-Up  
Calendar**







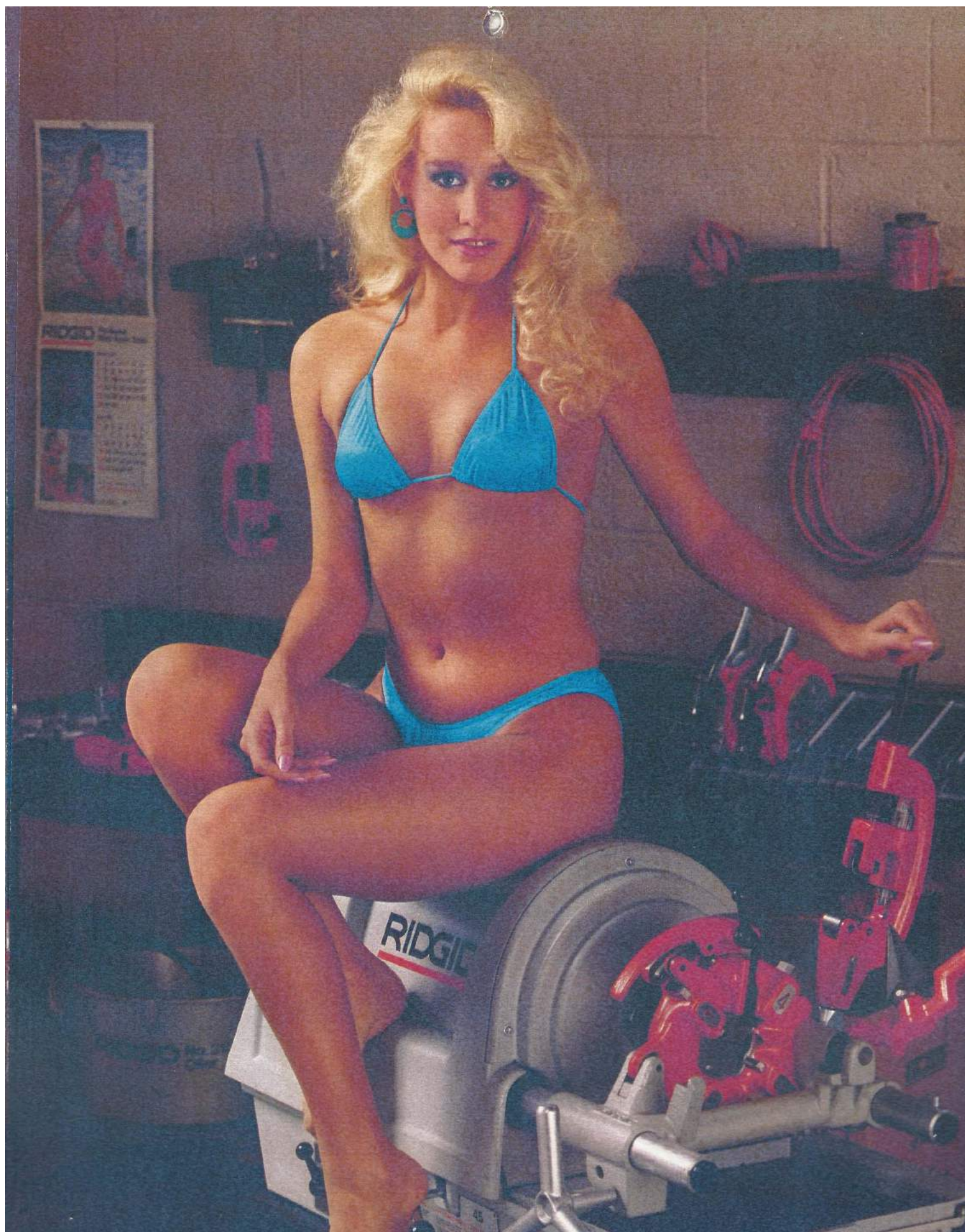


# RIDGID®

## Pre-Tested Work Saver® Tools









# RIDGID®

## Pre-Tested Work Saver® Tools



RIDGID threading machines deliver clean, true threads time after time in the plant, shop or on the job site. With a wide range of models to choose from you will always find the machine to match the job.

**Heather Ley**—from Dover, Ohio shown with the RIDGID 1822 Pipe and Bolt Threading Machine.

Photographed by:  
Harold Burns



### March 1989

S	M	T	W	T	F	S
			1	2	3	4
5	6	7	8	9	10	11
12	13	14	15	16	17	18
19	20	21	22	23	24	25
26	27	28	29	30	31	

### April 1989

S	M	T	W	T	F	S
						1
2	3	4	5	6	7	8
9	10	11	12	13	14	15
16	17	18	19	20	21	22
23/30	24	25	26	27	28	29

Your RIDGID Distributor keeps your overhead down because he has what you need, when you need it.

The Ridge Tool Company  
Subsidiary of Emerson Electric Co. 







# RIDGID®

## Pre-Tested Work Saver® Tools



When cutting, reaming, flaring, bending, soldering or brazing, RIDGID tubing tools do the job quickly and accurately. The RIDGID line of tubing tools is ideal for projects where accuracy and dependability is a must.

**Gina Raymond**—from Hartford, Connecticut displays a new Lever Bender and Tubing Cutter.

Photographed by:  
Peter Gowland



### May 1989

S	M	T	W	T	F	S
	1	2	3	4	5	6
7	8	9	10	11	12	13
14	15	16	17	18	19	20
21	22	23	24	25	26	27
28	29	30	31			

### June 1989

S	M	T	W	T	F	S
				1	2	3
4	5	6	7	8	9	10
11	12	13	14	15	16	17
18	19	20	21	22	23	24
25	26	27	28	29	30	

Your RIDGID Distributor helps get you back in business fast when you need parts or service.

The Ridge Tool Company  
Subsidiary of Emerson Electric Co. 







# RIDGID®

## Pre-Tested Work Saver® Tools



RIDGID Core Drills cut clean, round holes from 1/2" to 14" diameter in reinforced concrete, masonry and other hard materials; for installing pipe, electrical wires, vents and anchors for machines.

**Annie Riley** — who hails from Reno, Nevada photographed with a RIDGID RB 214 Core Drilling Rig

Photographed by:  
Harold Burns



### July 1989

S	M	T	W	T	F	S
						1
2	3	4	5	6	7	8
9	10	11	12	13	14	15
16	17	18	19	20	21	22
23/30	24/31	25	26	27	28	29

### August 1989

S	M	T	W	T	F	S
		1	2	3	4	5
6	7	8	9	10	11	12
13	14	15	16	17	18	19
20	21	22	23	24	25	26
27	28	29	30	31		

Your RIDGID Distributor is your up-to-date source on the latest technical developments.

The Ridge Tool Company  
Subsidiary of Emerson Electric Co. 

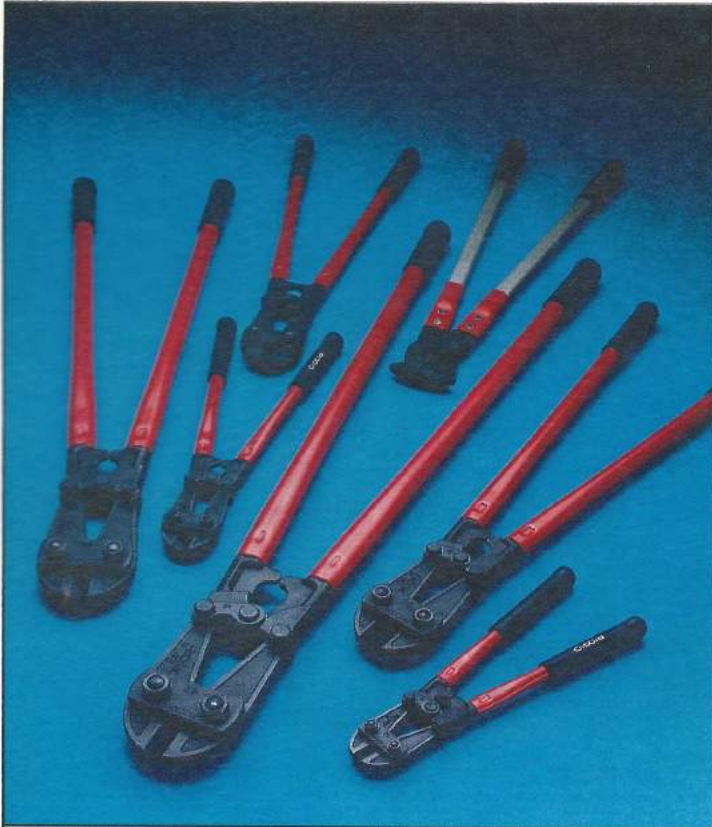






# RIDGID®

## Pre-Tested Work Saver® Tools



A true tool for the professional, designed by Ridge Tool in its quality tradition, the RIDGID bolt cutter has a greater mechanical advantage for quick, easy cuts on rod, wire mesh, reinforcing rod, steel strap and bolts.

**Kathy Stevenson**—from Stayton, Oregon poses with an 18" RIDGID Bolt Cutter.

Photographed by:  
Peter Gowland



### September 1989

S	M	T	W	T	F	S
					1	2
3	4	5	6	7	8	9
10	11	12	13	14	15	16
17	18	19	20	21	22	23
24	25	26	27	28	29	30

### October 1989

S	M	T	W	T	F	S
1	2	3	4	5	6	7
8	9	10	11	12	13	14
15	16	17	18	19	20	21
22	23	24	25	26	27	28
29	30	31				

Your RIDGID Distributor manages traffic so you get the goods on time, at least cost.

The Ridge Tool Company  
Subsidiary of Emerson Electric Co. 







# RIDGID®

## Pre-Tested Work Saver® Tools



The RIDGID line of hand and hydraulic knockouts feature a three point punch design that makes punching fast and simple to perform. Now you have the same quality in knockout sets as you have with other RIDGID products.

**Toni Costa**—a native of Honolulu displays a RIDGID Hand Knockout Set.

Photographed by:  
Peter Gowland



### November 1989

S	M	T	W	T	F	S
			1	2	3	4
5	6	7	8	9	10	11
12	13	14	15	16	17	18
19	20	21	22	23	24	25
26	27	28	29	30		

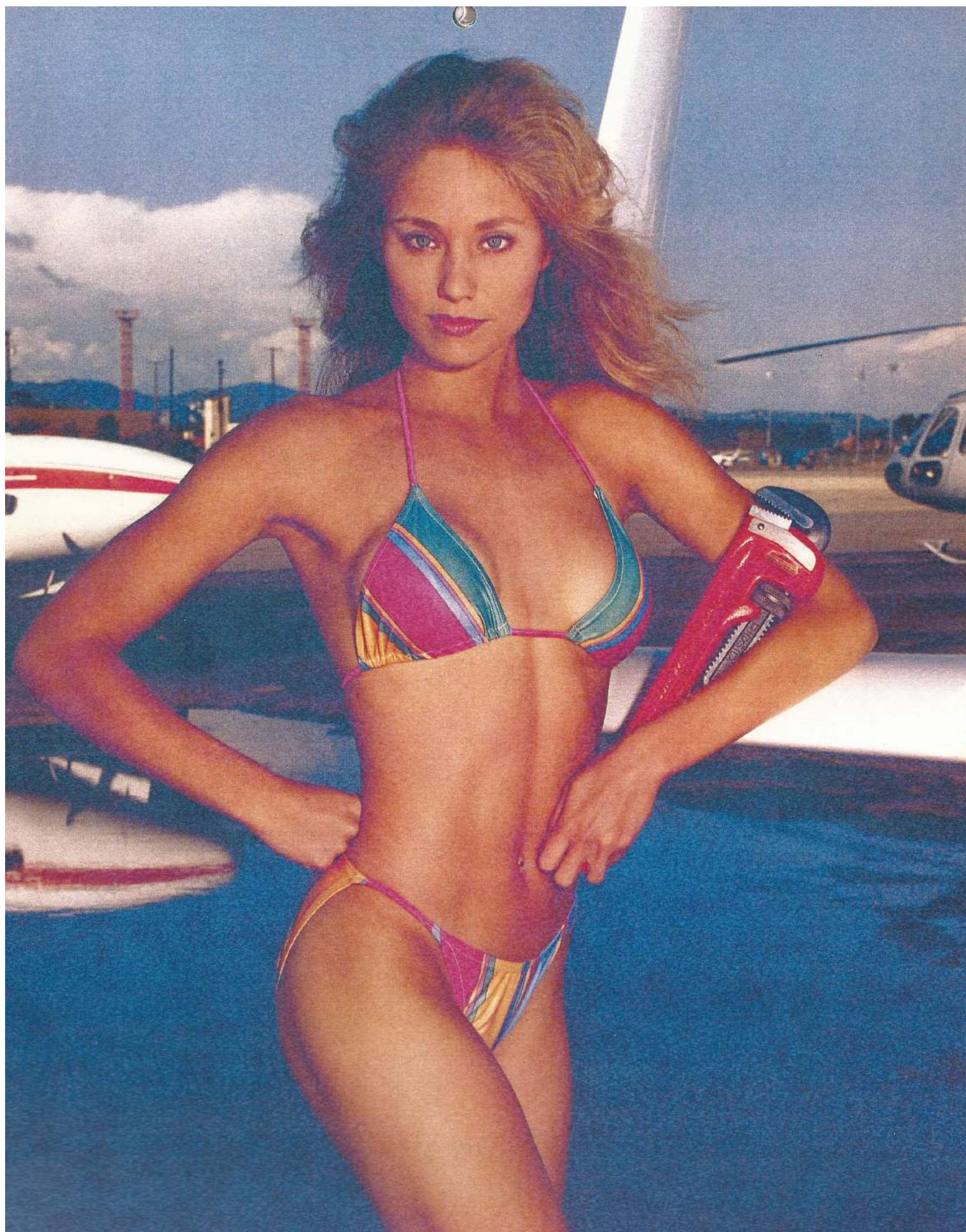
### December 1989

S	M	T	W	T	F	S
					1	2
3	4	5	6	7	8	9
10	11	12	13	14	15	16
17	18	19	20	21	22	23
24/31	25	26	27	28	29	30

Your RIDGID Distributor brings technical aid to your staff, to simplify and solve problems.

The Ridge Tool Company  
Subsidiary of Emerson Electric Co. 







# RIDGID®

## Pre-Tested Work Saver® Tools



### January 1990

S	M	T	W	T	F	S
	1	2	3	4	5	6
7	8	9	10	11	12	13
14	15	16	17	18	19	20
21	22	23	24	25	26	27
28	29	30	31			

### February 1990

S	M	T	W	T	F	S
				1	2	3
4	5	6	7	8	9	10
11	12	13	14	15	16	17
18	19	20	21	22	23	24
25	26	27	28			



RIDGID pipe wrenches are matchless in quality, durability, and are the overwhelming choice of professionals the world over. RIDGID pipe wrenches are backed by a lifetime warranty against defects in material and workmanship.

**Sheri Shattock**—from Atlanta, Georgia poses with a RIDGID 18" Heavy Duty Wrench.

Photographed by:  
Peter Gowland



Your RIDGID Distributor simplifies your record-keeping  
— one billing for your multitude of needs.

The Ridge Tool Company  
Subsidiary of Emerson Electric Co. 



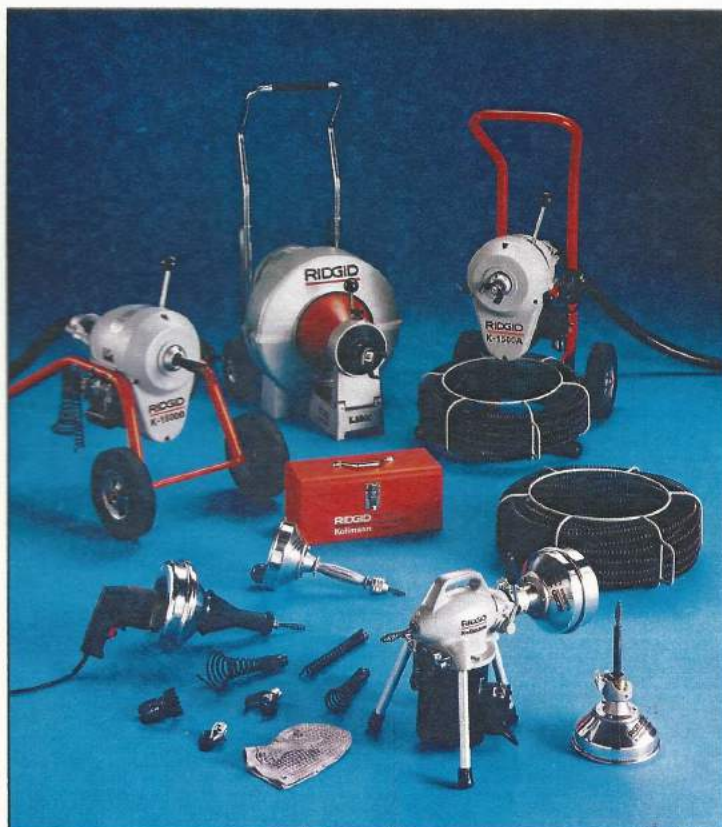




# RIDGID®

# Kollmann

Pipe and Drain Cleaning Equipment



March 1990

S	M	T	W	T	F	S
				1	2	3
4	5	6	7	8	9	10
11	12	13	14	15	16	17
18	19	20	21	22	23	24
25	26	27	28	29	30	31

April 1990

S	M	T	W	T	F	S
1	2	3	4	5	6	7
8	9	10	11	12	13	14
15	16	17	18	19	20	21
22	23	24	25	26	27	28
29	30					



There is a RIDGID/Kollmann machine for every pipe and drain cleaning need. Whether the requirement is for a hand held tool, a high speed sectional cable machine or a drum type unit, RIDGID/Kollmann is the choice of professionals.

**Marcia Ilyinsky**—from Cleveland, Ohio photographed with a K5800 Drain Cleaning Machine.

Photographed by: Harold Burns



**Your RIDGID Distributor keeps you competitive with the latest products for your industry.**

The Ridge Tool Company  
Subsidiary of Emerson Electric Co. 







# RIDGID®

## Pre-Tested Work Saver® Tools



Nothing reflects professional pipe working skills better than finishing threads. So when your reputation hangs by a thread, protect yourself with the industry's best — RIDGID threaders, dies, reamers and oils.

**Lisa Borgas**—a native of Calabasas, California poses with the new RIDGID R200 Hand Threader.

Photographed by:  
Harold Burns



### May 1990

S	M	T	W	T	F	S
		1	2	3	4	5
6	7	8	9	10	11	12
13	14	15	16	17	18	19
20	21	22	23	24	25	26
27	28	29	30	31		

### June 1990

S	M	T	W	T	F	S
					1	2
3	4	5	6	7	8	9
10	11	12	13	14	15	16
17	18	19	20	21	22	23
24	25	26	27	28	29	30

Your RIDGID Distributor guarantees your buying power with hundreds of suppliers.

The Ridge Tool Company  
Subsidiary of Emerson Electric Co. 







# RIDGID®

## Pre-Tested Work Saver® Tools



RIDGID products built for over 60 years by professionals have become the standard by which other tools are judged. RIDGID pipe working tools and workholding devices deliver long lasting and quality performance.

Heather Hudson—from Malibu, California poses with a RIDGID 40A Tristand Yolk Vise.

Photographed by:  
Harold Burns



### July 1990

S	M	T	W	T	F	S
1	2	3	4	5	6	7
8	9	10	11	12	13	14
15	16	17	18	19	20	21
22	23	24	25	26	27	28
29	30	31				

### August 1990

S	M	T	W	T	F	S
			1	2	3	4
5	6	7	8	9	10	11
12	13	14	15	16	17	18
19	20	21	22	23	24	25
26	27	28	29	30	31	

Your RIDGID Distributor warehouses for you; saves you capital, insurance, overhead.

The Ridge Tool Company  
Subsidiary of Emerson Electric Co. 







# RIDGID®

## Pre-Tested Work Saver® Tools



RIDGID ladders, stepladders and hand tools are designed to provide long and dependable service on the job and to meet the high standards required by the professional craftsman.

**Tricia Severy**—from Washington, DC shown with a RIDGID Stepladder and a selection of Hand Tools.

Photographed by:  
Harold Burns



### September 1990

S	M	T	W	T	F	S
						1
2	3	4	5	6	7	8
9	10	11	12	13	14	15
16	17	18	19	20	21	22
23/30	24	25	26	27	28	29

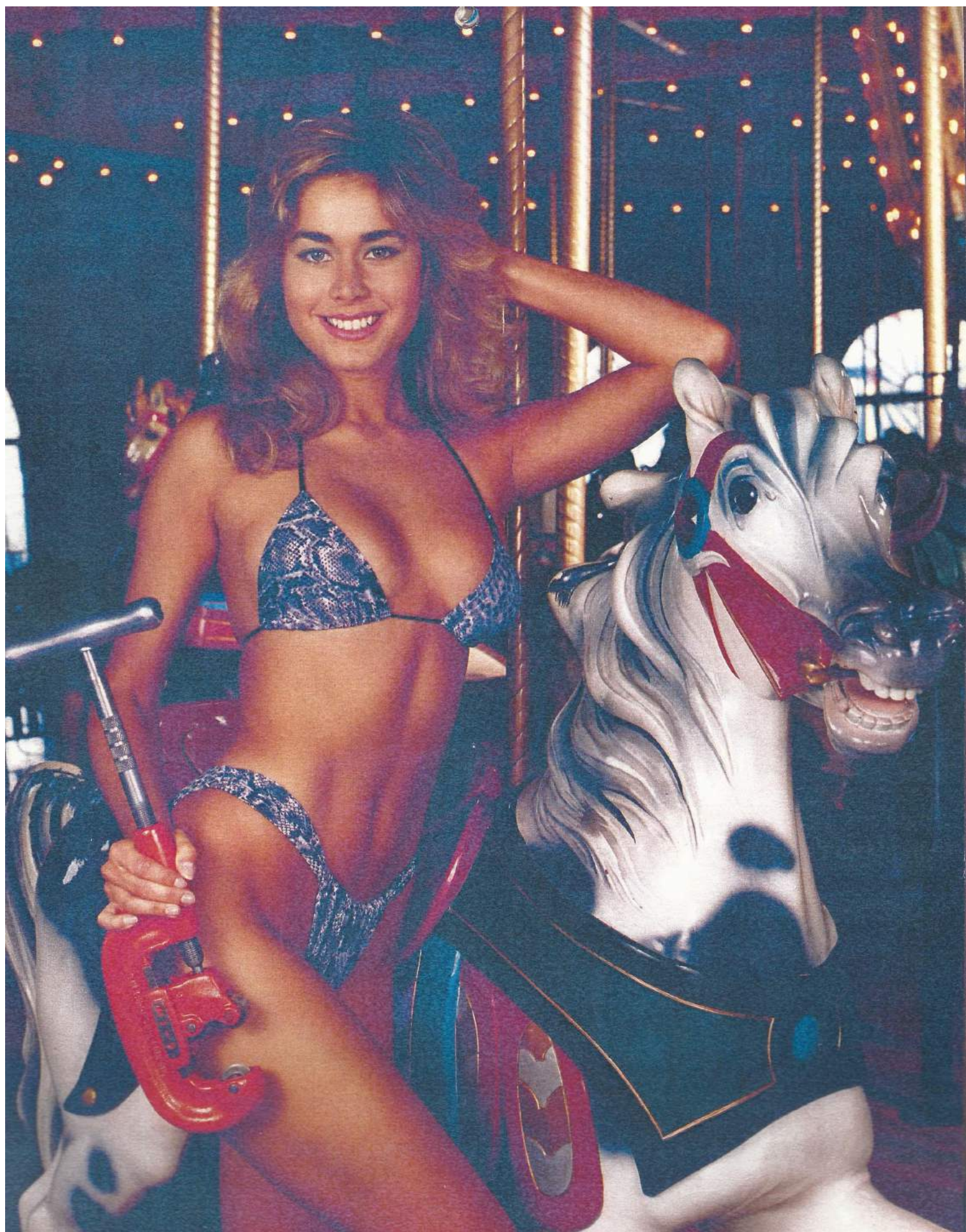
### October 1990

S	M	T	W	T	F	S
	1	2	3	4	5	6
7	8	9	10	11	12	13
14	15	16	17	18	19	20
21	22	23	24	25	26	27
28	29	30	31			

Your RIDGID Distributor helps you avoid downtime with on-the-spot technical advice.

The Ridge Tool Company  
Subsidiary of Emerson Electric Co. 

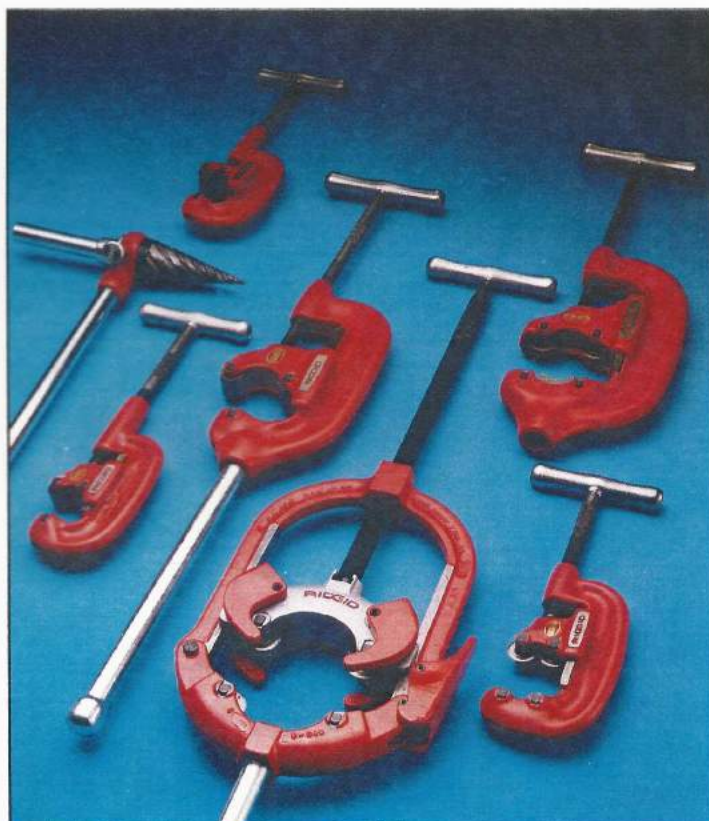






# RIDGID®

## Pre-Tested Work Saver® Tools



### November 1990

S	M	T	W	T	F	S
				1	2	3
4	5	6	7	8	9	10
11	12	13	14	15	16	17
18	19	20	21	22	23	24
25	26	27	28	29	30	

### December 1990

S	M	T	W	T	F	S
						1
2	3	4	5	6	7	8
9	10	11	12	13	14	15
16	17	18	19	20	21	22
23/30	24/31	25	26	27	28	29



RIDGID pipe cutters are tough, built to last and designed to deliver true cuts every time. Manufactured for fast, clean pipe cutting by hand or with power. Once you use them, you'll know why their reputation is legendary.

Cindy Krainer—from Ventura, California displays a RIDGID 200A Pipe Cutter.

Photographed by:  
Peter Gowland



Your RIDGID Distributor buys from hundreds of suppliers, so you can buy from just one.

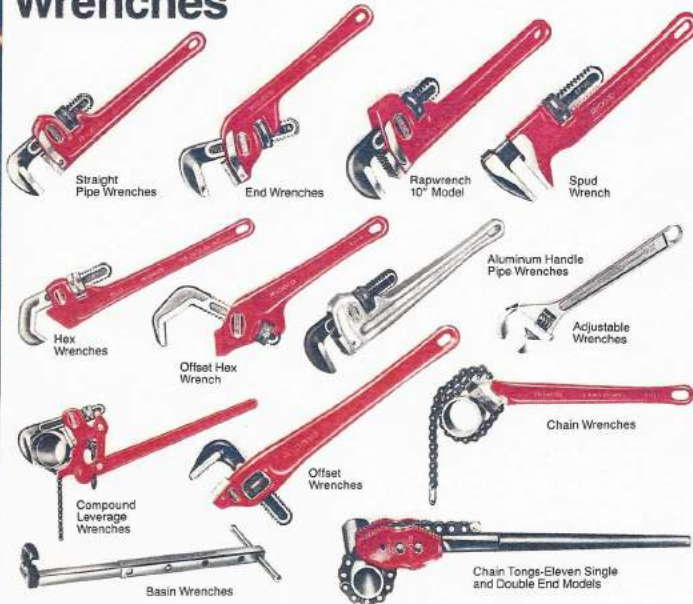
The Ridge Tool Company  
Subsidiary of Emerson Electric Co. 



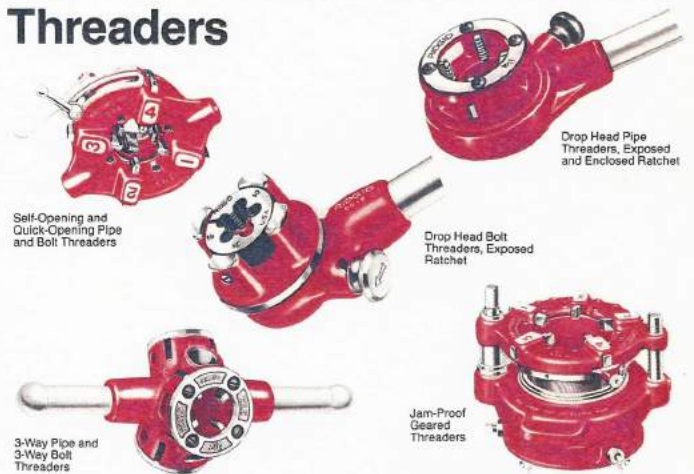
# RIDGID®

## Pre-Tested Work Saver® Tools

### Wrenches



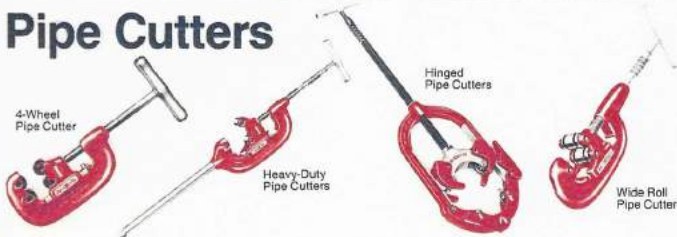
### Threaders



### Tubing Tools



### Pipe Cutters

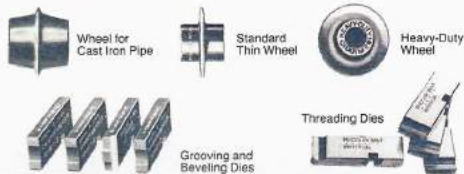


### Reamers

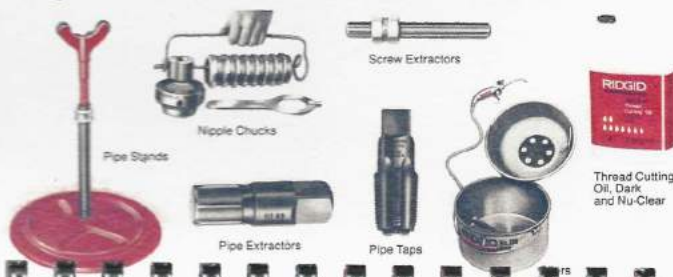


### Cutting Wheels and Dies

Always use trade-marked RIDGID replacement dies and cutter wheels to maintain best performance of your RIDGID Pre-Tested Work Saver Tools.



### Pipe Tools and Accessories



### Soil Pipe Tools

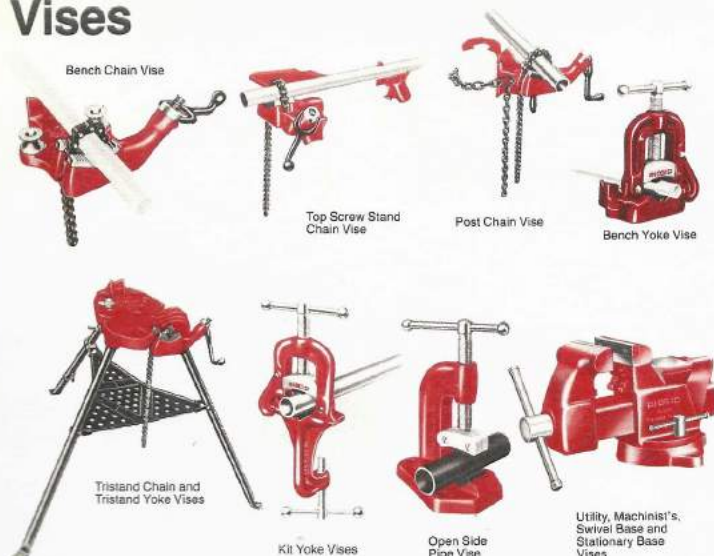


### Misc. Hand Tools





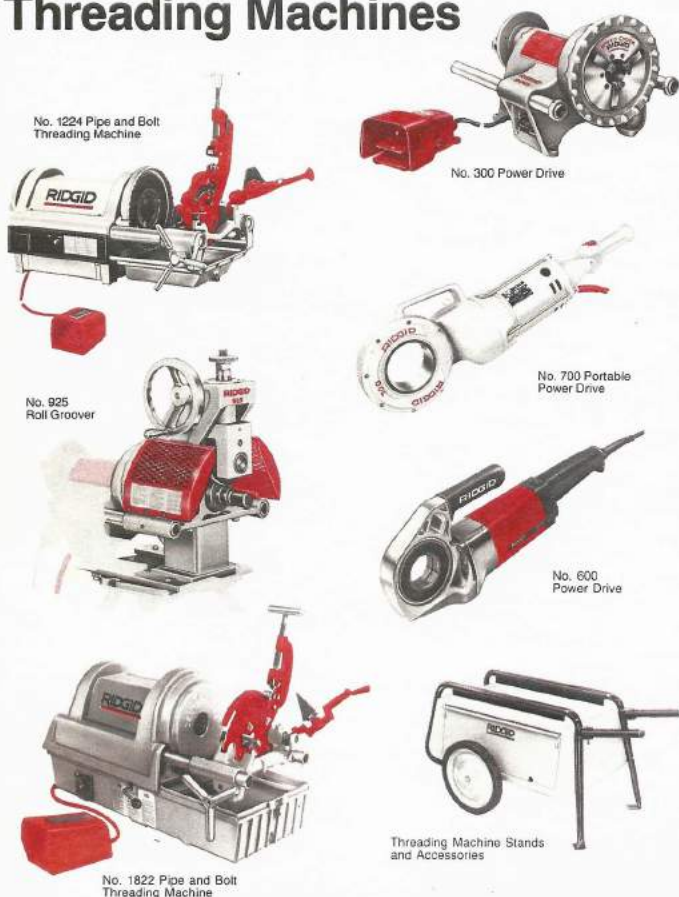
## Vises



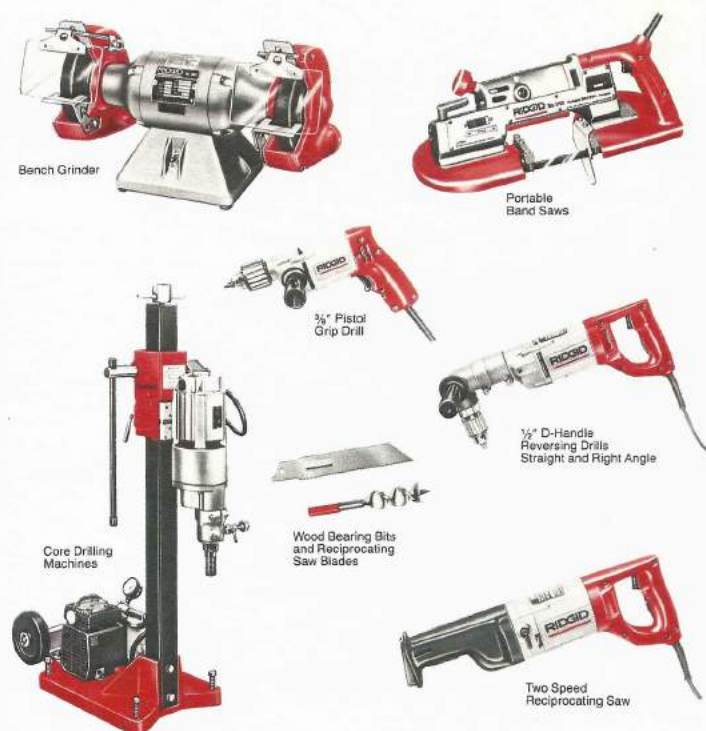
## Knockout Sets



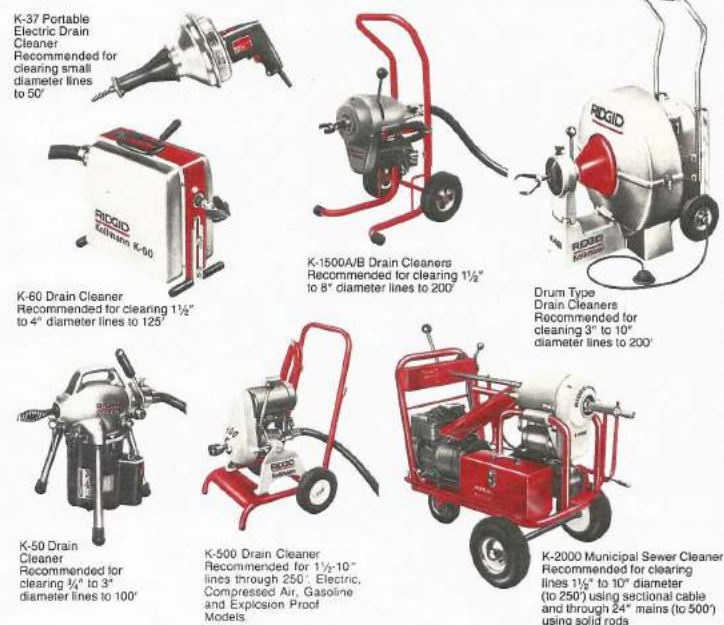
## Power Drives and Threading Machines



## Power Tools



## RIDGID | Kollmann Pipe and Drain Cleaning Equipment



The Ridge Tool Company  
400 Clark Street  
Elyria, Ohio 44036-2023 U.S.A.

Ridge Tool Subsidiary  
Emerson Electric Co.

Cover and product photography by Harold Burns, Cleveland, Ohio