

**MACKMA®**

GRUPPO MASSARO®

TECHNICAL INNOVATION,  
EFFICIENT PRECISION.



Kontaktujte nás pre technické poradenstvo, financovanie  
a cenové ponuky na náradie MACKMA

**ant s.r.o.**

**Potrubárske a inštalatérske náradie**



Staré grunty 17/a  
841 04 Bratislava  
02/60 10 37 21  
[ant@ant.sk](mailto:ant@ant.sk)  
[www.ant.sk](http://www.ant.sk)  
[www.mackma.sk](http://www.mackma.sk)



**MACKMA©:** is a company created to produce the innovative technology for the metal deformation.

Today Mackma© after **only 36 months** of its existence boast on its own products the worldwide patented technologies.

Mackma©today is the absolute leader in the technological innovation applied to the tube bending machinery, mandrel benders and ring rollers.

The “entourage” Mackma© is able to develop **highly innovative technologies** that can change even the simple concept of tube bending.

Mackma© is present today in the European market and is establishing the international strategic agreements that give a possibility to ensure the customer confidence and the efficiency.

Mackma© is the branch of the **MASSARO GROUP** which operates for more than 30 years in the construction industry and the metal carpentry in Italy and in all over the world.

**MACKMA© – Leader of Innovative Technology!**

# BENDING MACHINE BM34 MACKMA

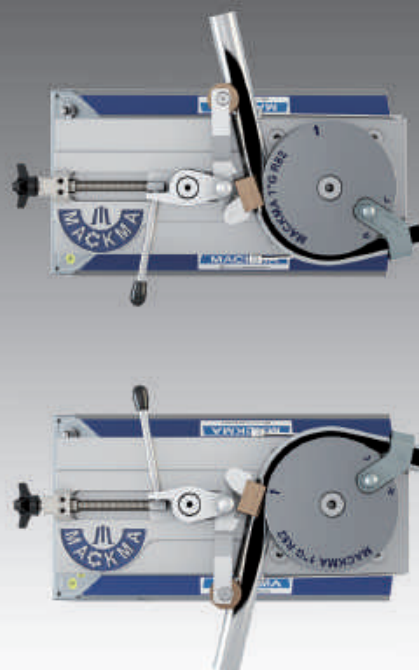
**Perfect bends and innovation, like a straight line.**

Rightward and leftward bending  
Low energy consumption  
Variable speed

WARRANTY  
**2 YEARS**  
MACKMA



*Tube and Pipe Bending machine BM34, non mandrel, electric, semi-automatic.*



NEW  
GENERATION  
2015

**MACKMA**  
GRUPPO MASSARO





# BENDING MACHINE BM34 MACKMA

*Tube and Pipe Bending machine  
BM34, non mandrel,  
electric, semi-automatic.*

The **BM34 Bending Machine** is **THE ONLY non mandrel pipe bending machine** able to bend tubes and pipes to the left or right, by means of a reversible die holder, designed and patented by us. The innovative design allows the bending of pipes up to 33,4 mm in diameter and 3,38 mm in wall thickness. With a maximum of 170 mm centre line radius it is capable of maximum performance for this size of machine, even in the most demanding markets.

The bend rotation speed [2 to 3 RPM] is monitored by a dedicated inverter, to ensure the correct bending speed according to the diameter and thickness of the tube.

The modular design of the bending shaft assembly also allows the use of most competitors tooling, reducing long term tooling costs.

The inverter-controlled motor reduces energy consumption to a minimum.

The machine is mounted on precision casters for effortless movement around busy workshops and sites

**Mackma** uses only 100% high quality Italian components to ensure long-term reliability.

Testament to the high quality of their machines is

Mackma's standard 2 year warranty.



The image shown above is understood as a preliminary indication. MACKMA reserves the right to change form and function which are used exclusively for innovative improvements.

## MACKMA

GRUPPO MASSARO

Via Volle snc  
03030 Piedimonte San Germano (FR)  
Tel. +39 0776 404326 - 403489  
Fax +39 0776 403460  
info@mackma.com  
www.mackma.com



### SUITABLE FOR SECTORS, SUCH AS:

*Industrial Tools, Tubular furniture  
Automotive/Motorcycle  
Dairy and Marine  
Sport and fitness, Hydraulics  
Factory maintenance... and many others...*



### MAIN TECHNICAL DATA BM34

|  |                        |     |
|--|------------------------|-----|
| Pipe Max Outer Diameter                | 38                     | mm  |
| Max Torque                             | 914                    | N/m |
| Diameter using FE – 42 kg/mq           | 33,4x3,38              | mm  |
| Diameter using FE – 35 kg/mq           | 38x2                   | mm  |
| Diameter using AISI 304/316 – 65 kg/mq | 33,4x1,5               | mm  |
| Maximum radius                         | 170                    | mm  |
| Max curvature angle                    | 180°                   |     |
| Minimum rotation speed                 | 2                      | rpm |
| Maximum rotation speed                 | 3                      | rpm |
| Bending direction                      | rightward and leftward |     |
| Electric tension                       | 220                    | V   |
| Max installed power                    | 0,55                   | KW  |
| Weight                                 | 33                     | Kg  |
| Dimensions (WxHxL)                     | 268x310x478            | mm  |
| Operating temperature                  | 0 - 50°                |     |

## NON MANDREL ACCESSORIES & SPARE PARTS FOR BM 34

**SHAFT - BM3403A**



**HANDWHEEL - BM34VO**



**SLIDER - BM3410**



**LEVER - BM34BL**



**COUNTER BENDING DIE SPRING - BM4277**



**PIVOT - BM3451A**



**POSITION INDICATOR - BM340P**



**PIN FOR COUNTERBENDING DIE SUPPORT - BM3418**



**ANTIVIBRATION FOOT - BM34PA**



**COUNTERBENDING DIE SUPPORT - BM42SP01**



**COUNTER PROTECTION - BM3454**



**SCREW THREAD- BM3406**



**COUNTERBENDING DIE SCREW - VCGRM6L16**



**ROLL SCREW - VCGRM8L45**



**REDUCTION SHAFT - BM3403A2**



**DOWEL PIN - BM34LING**



## NON MANDREL ACCESSORIES & SPARE PARTS FOR BM 34

**FOOT PEDAL - BIAFP01**



**GREASE SPRAY CAN - GS400M**



**COMMAND BUTTON - CM01**



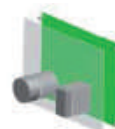
**ENGINE - MT34**



**INSTRUMENT BOARD - SP01**



**ELECTRONIC BOARD 220V - SC220**



**WORK BUTTON - SWC01**



**KEYBOARD - CB01**



**CONNECTOR - BIA CCB01**



**PEDAL - PD01**



**EMERGENCY BUTTON - EM01**



**GRIP - IMP01**



The images shown above are understood as a preliminary indication.

Mackma Srl reserves the right to change form and function which are used exclusively for innovative improvements.

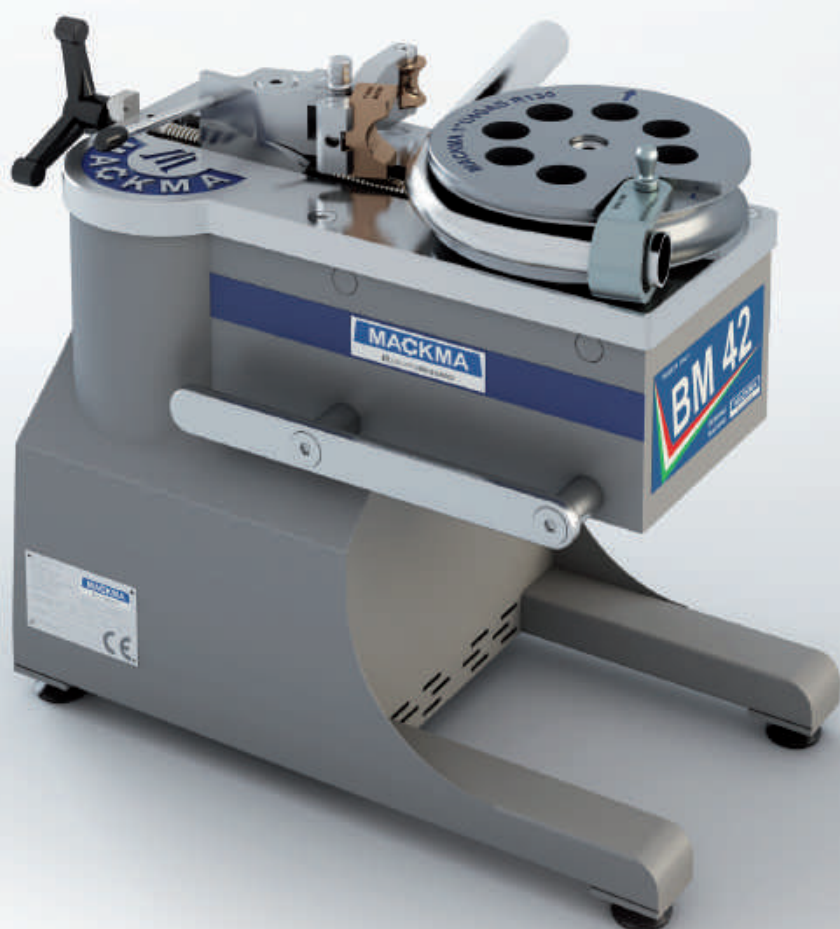


# BENDING MACHINE BM42 MACKMA

**Perfect bends and innovation, like a straight line.**

Rightward and leftward bending  
Underhead curvature  
Variable speed  
Low energy consumption

**WARRANTY**  
**2 YEARS**  
**MACKMA**



*Tube and Pipe Bending machine BM42, non mandrel, electric, semi-automatic.*



**NEW  
GENERATION  
2015**

**MACKMA**  
GRUPPO MASSARO



# BENDING MACHINE BM42 MACKMA

*Tube and Pipe Bending machine  
BM42, non mandrel,  
electric, semi-automatic.*

The **BM42 Bending Machine** is **THE ONLY non mandrel pipe bending machine** able to bend tubes and pipes to the left or right, by means of a reversible die holder, designed and patented by us. The innovative design allows the bending of pipes up to 42 mm in diameter and 3 mm in wall thickness. With a maximum of 260 mm centre line radius it is capable of maximum performance for this size of machine, even in the most demanding markets.

The bend rotation speed [2 to 3 RPM] is monitored by a dedicated inverter, to ensure the correct bending speed according to the diameter and thickness of the tube.

The compact **"cantilever head"** allows bending complex component shapes that may require the tube passing under the gearbox assembly.

The modular design of the bending shaft assembly also allows the use of most competitors tooling, reducing long term tooling costs.

The inverter-controlled motor reduces energy consumption to a minimum.

The machine is mounted on precision casters for effortless movement around busy workshops and sites

**Mackma** uses only 100% high quality Italian components to ensure long-term reliability.

Testament to the high quality of their machines is Mackma's standard 2 year warranty.



The image shown above is understood as a preliminary indication. MACKMA reserves the right to change form and function which are used exclusively for innovative improvements.

## MACKMA

GRUPPO MASSARO

Via Volla snc  
03030 Piedimonte San Germano (FR)  
Tel. +39 0776 404326 - 403489  
Fax +39 0776 403460  
info@mackma.com  
www.mackma.com



### SUITABLE FOR SECTORS, SUCH AS:

*Industrial Tools, Tubular furniture  
Automotive/Motorcycle  
Dairy and Marine  
Sport and fitness, Hydraulics  
Factory maintenance... and many others...*



### MAIN TECHNICAL DATA BM42

|  |                        |     |
|--|------------------------|-----|
| Pipe Max Outer Diameter                | 48                     | mm  |
| Max Torque                             | 1800                   | N/m |
| Diameter using FE – 42 kg/mq           | 42x3                   | mm  |
| Diameter using FE – 35 kg/mq           | 48x1,5                 | mm  |
| Diameter using AISI 304/316 – 65 kg/mq | 42x1,5                 | mm  |
| Maximum radius                         | 260                    | mm  |
| Height of the head                     | 188                    | mm  |
| Projection of the head                 | 242                    | mm  |
| Max curvature angle                    | 180°                   |     |
| Minimum rotation speed                 | 2                      | rpm |
| Maximum rotation speed                 | 3                      | rpm |
| Bending direction                      | rightward and leftward |     |
| Electric tension                       | 220/400                | V   |
| Max installed power                    | 0,75                   | KW  |
| Weight                                 | 90                     | Kg  |
| Dimensions (WxHxL)                     | 347x550x655            | mm  |
| Operating temperature                  | 0 - 50°                |     |



**NON MANDREL ACCESSORIES & SPARE PARTS  
FOR BM 42 PORTABLE**

**SHAFT - BM4203A1**



**HANDWHEEL - BM48C1**



**SLIDER - BM4210A**



**LEVER - BM48C2**



**COUNTER BENDING DIE SPRING - BM4277**



**PIVOT - BM4251A**



**POSITION INDICATOR - BM4273**



**PIN FOR COUNTERBENDING DIE SUPPORT - BM4818**



**ANTIVIBRATION FOOT - BM48C5**



**COUNTERBENDING DIE SUPPORT - BM42SP01**



**COUNTER PROTECTION - BM4293**



**SCREW THREAD- BM4206**



**COUNTERBENDING DIE SCREW - VCGRM6L16**



**ROLL SCREW - VCGRM8L45**



**REDUCTION SHAFT - BM4203A2**



**DOWEL PIN - BM48LING**



## NON MANDREL ACCESSORIES & SPARE PARTS FOR BM 42 PORTABLE

**GRIP - IMP01**



**WORK BUTTON - SWC01**



**FOOT PEDAL - ROSFP01**



**GREASE SPRAY CAN - GS400M**



**CONNECTOR - ROS CCR01**



**EMERGENCY BUTTON - EM01**



**PEDAL - PD01**



**SIMPLY SYSTEM CONTROL - SMPSC14**



The images shown above are understood as a preliminary indication.

Mackma Srl reserves the right to change form and function which are used exclusively for innovative improvements.

# BENDING MACHINE BM42 A MACKMA

**Perfect bends and innovation, like a straight line.**

Right and left hand bending  
Underhead bending  
Integrated connection for pipe deburring tool  
Variable speed  
Low energy consumption



**WARRANTY**  
**2 YEARS**  
**MACKMA**

*Tube and Pipe Bending machine BM42 A, non mandrel, electric, semi-automatic.*



**NEW  
GENERATION  
2015**

**MACKMA**

GRUPPO MASSARO





# BENDING MACHINE BM42 A MACKMA

*Tube and Pipe Bending machine  
BM42 A, non mandrel,  
electric, semi-automatic.*

The **BM42 A Bending Machine** is **THE ONLY non mandrel pipe bending machine** able to bend tubes and pipes to the left or right, by means of a reversible die holder, designed and patented by us.

Other unique benefits include a connection for the installation of a useful internal/external tube deburring tool. The innovative design allows the bending of pipes up to 42 mm in diameter and 3 mm in wall thickness. With a maximum of 260 mm centre line radius it is capable of maximum performance for this size of machine, even in the most demanding markets.

The bend rotation speed [2 to 3 RPM] is monitored by a dedicated inverter, to ensure the correct bending speed according to the diameter and thickness of the tube.

The compact **"cantilever head"** allows bending complex component shapes that may require the tube passing under the gearbox assembly.

The modular design of the bending shaft assembly also allows the use of most competitors tooling, reducing long term tooling costs.

The inverter-controlled motor reduces energy consumption to a minimum. The machine is mounted on precision casters for effortless movement around busy workshops and sites **Mackma** uses only 100% high quality Italian components to ensure long-term reliability.

Testament to the high quality of their machines is Mackma's standard 2 year warranty.



The image shown above is understood as a preliminary indication. MACKMA reserves the right to change form and function which are used exclusively for innovative improvements.

**MACKMA**  
GRUPPO MASSARO

Via Volla snc  
03030 Piedimonte San Germano (FR)  
Tel. +39 0776 404326 - 403489  
Fax +39 0776 403460  
info@mackma.com  
www.mackma.com



## SUITABLE FOR SECTORS, SUCH AS:

*Industrial Tools, Tubular furniture  
Automotive/Motorcycle  
Dairy and Marine  
Sport and fitness, Hydraulics  
Factory maintenance... and many others...*



## MAIN TECHNICAL DATA BM42 A

|  |                        |     |
|--|------------------------|-----|
| Pipe Max Outer Diameter                | 48                     | mm  |
| Max Torque                             | 1800                   | N/m |
| Diameter using FE – 42 kg/mq           | 42x3                   | mm  |
| Diameter using FE – 35 kg/mq           | 48x1,5                 | mm  |
| Diameter using AISI 304/316 – 65 kg/mq | 42x1,5                 | mm  |
| Maximum radius                         | 260                    | mm  |
| Height of the head                     | 188                    | mm  |
| Projection of the head                 | 242                    | mm  |
| Max curvature angle                    | 180°                   |     |
| Minimum rotation speed                 | 2                      | rpm |
| Maximum rotation speed                 | 3                      | rpm |
| Bending direction                      | rightward and leftward |     |
| Electric tension                       | 220/400                | V   |
| Max installed power                    | 0,75                   | KW  |
| Weight                                 | 110                    | Kg  |
| Dimensions (WxHxL)                     | 440x970x700            | mm  |
| Operating temperature                  | 0 - 50°                |     |

## NON MANDREL ACCESSORIES & SPARE PARTS FOR BM 42

**SHAFT - BM4203A1**



**HANDWHEEL - BM48C1**



**SLIDER - BM4210A**



**LEVER - BM48C2**



**COUNTER BENDING DIE SPRING - BM4277**



**PIVOT - BM4251A**



**POSITION INDICATOR - BM4273**



**PIN FOR COUNTERBENDING DIE SUPPORT - BM4818**



**ANTIVIBRATION FOOT - BM48C5**



**COUNTERBENDING DIE SUPPORT - BM42SP01**



**COUNTER PROTECTION - BM4293**



**SCREW THREAD- BM4206**



**COUNTERBENDING DIE SCREW - VCGRM6L16**



**ROLL SCREW - VCGRM8L45**



**REDUCTION SHAFT - BM4203A2**



**DOWEL PIN - BM48LING**



## NON MANDREL ACCESSORIES & SPARE PARTS FOR BM 42

**SWIVEL WHEEL - BM48RG01**



**WORK BUTTON - SWC01**



**FOOT PEDAL - ROSFP01**



**FOOT PEDAL - BIAFP01**



**CONNECTOR - ROS CCR01**



**CONNECTOR - BIA CCB01**



**EXPERT SYSTEM CONTROL - EXPSC14**



**SIMPLY SYSTEM CONTROL - SMPSC14**



**EMERGENCY BUTTON - EM01**



**GREASE SPRAY CAN - GS400M**



**GRIP - IMP01**



**PEDAL - PD01**



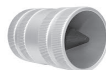
**FIXED WHEEL - BM48RF01**



**DEBURRING VICE - BM76MS**



**TUBE DEBURRING TOOL - BM76SB**



**POSITIONING DEVICE LENGTH 3 M - POS3M42A**



**POSITIONING DEVICE LENGTH 6 M - POS6M42A**



The images shown above are understood as a preliminary indication.

Mackma Srl reserves the right to change form and function which are used exclusively for innovative improvements.



# BENDING MACHINE BM48 MACKMA

Perfect bends and innovation, like a straight line.

Right and left hand bending  
Underhead bending  
Integrated connection for pipe deburring tool  
Variable speed  
Low energy consumption



WARRANTY  
**2 YEARS**  
MACKMA

*Tube and Pipe Bending machine BM48, non mandrel, electric, semi-automatic.*



NEW  
GENERATION  
2015

**MACKMA**  
GRUPPO MASSARO



# BENDING MACHINE BM48 MACKMA

*Tube and Pipe Bending machine  
BM48, non mandrel,  
electric, semi-automatic.*

The **BM48 Bending Machine** is **THE ONLY non mandrel pipe bending machine** able to bend tubes and pipes to the left or right, by means of a reversible die holder, designed and patented by us.

Other unique benefits include a connection for the installation of a useful internal/external tube deburring tool. The innovative design allows the bending of pipes up to 48 mm in diameter and 3,5 mm in wall thickness. With a maximum of 260 mm centre line radius it is capable of maximum performance for this size of machine, even in the most demanding markets.

The bend rotation speed [2 to 3 RPM] is monitored by a dedicated inverter, to ensure the correct bending speed according to the diameter and thickness of the tube.

The compact **"cantilever head"** allows bending complex component shapes that may require the tube passing under the gearbox assembly.

The modular design of the bending shaft assembly also allows the use of most competitors tooling, reducing long term tooling costs.

The inverter-controlled motor reduces energy consumption to a minimum. The machine is mounted on precision casters for effortless movement around busy workshops and sites **Mackma** uses only 100% high quality Italian components to ensure long-term reliability.

Testament to the high quality of their machines is Mackma's standard 2 year warranty.



The image shown above is understood as a preliminary indication. MACKMA reserves the right to change form and function which are used exclusively for innovative improvements.

**MACKMA**  
GRUPPO MASSARO

Via Volla snc  
03030 Piedimonte San Germano (FR)  
Tel. +39 0776 404326 - 403489  
Fax +39 0776 403460  
info@mackma.com  
www.mackma.com



## SUITABLE FOR SECTORS, SUCH AS:

*Industrial Tools, Tubular furniture  
Automotive/Motorcycle  
Dairy and Marine  
Sport and fitness, Hydraulics  
Factory maintenance... and many others...*



## MAIN TECHNICAL DATA BM48

|  |                        |     |
|--|------------------------|-----|
| Pipe Max Outer Diameter                | 48                     | mm  |
| Max Torque                             | 2400                   | N/m |
| Diameter using FE – 42 kg/mq           | 48x3,5                 | mm  |
| Diameter using FE – 35 kg/mq           | 48x4                   | mm  |
| Diameter using AISI 304/316 – 65 kg/mq | 48x2                   | mm  |
| Maximum radius                         | 260                    | mm  |
| Height of the head                     | 188                    | mm  |
| Projection of the head                 | 285                    | mm  |
| Max curvature angle                    | 180°                   |     |
| Minimum rotation speed                 | 2                      | rpm |
| Maximum rotation speed                 | 3                      | rpm |
| Bending direction                      | rightward and leftward |     |
| Electric tension                       | 220/400                | V   |
| Max installed power                    | 1,1                    | KW  |
| Weight                                 | 110                    | Kg  |
| Dimensions (WxhxL)                     | 440x970x700            | mm  |
| Operating temperature                  | 0 - 50°                |     |



**NON MANDREL ACCESSORIES & SPARE PARTS  
FOR BM 48**

**SHAFT - BM4203A1**



**HANDWHEEL - BM48C1**



**SLIDER - BM4210A**



**LEVER - BM48C2**



**COUNTER BENDING DIE SPRING - BM4277**



**PIVOT - BM4251A**



**POSITION INDICATOR - BM4273**



**PIN FOR COUNTERBENDING DIE SUPPORT - BM4818**



**ANTIVIBRATION FOOT - BM48C5**



**COUNTERBENDING DIE SUPPORT - BM42SP01**



**COUNTER PROTECTION - BM4293**



**SCREW THREAD- BM4206**



**COUNTERBENDING DIE SCREW - VCGRM6L16**



**ROLL SCREW - VCGRM8L45**



**REDUCTION SHAFT - BM4203A2**



**FIXED WHEEL - BM48RF01**





## NON MANDREL ACCESSORIES & SPARE PARTS FOR BM 48

**SWIVEL WHEEL - BM48RG01**



**DOWEL PIN - BM48LING**



**FOOT PEDAL - ROSFP01**



**FOOT PEDAL - BIAFP01**



**CONNECTOR - ROS CCR01**



**CONNECTOR - BIA CCB01**



**EXPERT SYSTEM CONTROL - EXPSC14**



**SIMPLY SYSTEM CONTROL - SMPSC14**



**EMERGENCY BUTTON - EM01**



**GREASE SPRAY CAN - GS400M**



**GRIP - IMP01**



**PEDAL - PD01**



**WORK BUTTON - SWC01**



**DEBURRING VICE - BM76MS**



**TUBE DEBURRING TOOL - BM76SB**



**POSITIONING DEVICE LENGTH 3 M - POS3M48**



**POSITIONING DEVICE LENGTH 6 M - POS6M48**



The images shown above are understood as a preliminary indication.

Mackma Srl reserves the right to change form and function which are used exclusively for innovative improvements.

# BENDING MACHINE BM60 MACKMA

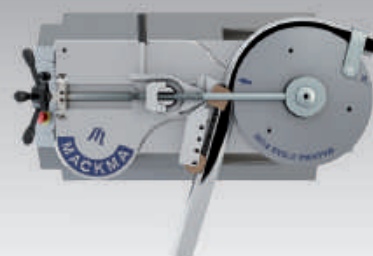
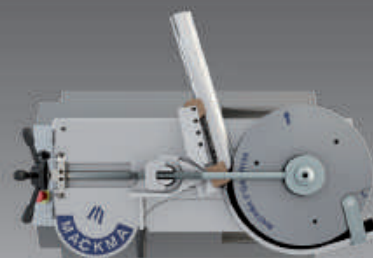
Perfect bends and innovation, like a straight line.

Right and left hand bending  
Underhead bending  
Integrated connection for pipe deburring tool  
Variable speed  
Low energy consumption

WARRANTY  
**2 YEARS**  
MACKMA



*Tube and Pipe Bending machine BM60, non mandrel, electric, semi-automatic.*



NEW  
GENERATION  
2015

**MACKMA**

GRUPPO MASSARO





# BENDING MACHINE BM60 MACKMA

*Tube and Pipe Bending machine  
BM60, non mandrel,  
electric, semi-automatic.*

The **BM60 Bending Machine** is **THE ONLY non mandrel pipe bending machine** able to bend tubes and pipes to the left or right, by means of a reversible die holder, designed and patented by us. Other unique benefits include a connection for the installation of a useful internal/external tube deburring tool.

The innovative design allows the bending of pipes up to 60 mm in diameter and 4 mm in wall thickness. With a maximum of 380 mm centre line radius it is capable of maximum performance for this size of machine, even in the most demanding markets.

The bend rotation speed [1 to 2 RPM] is monitored by a dedicated inverter, to ensure the correct bending speed according to the diameter and thickness of the tube.

The compact "cantilever head" allows bending complex component shapes that may require the tube passing under the gearbox assembly.

The modular design of the bending shaft assembly also allows the use of most competitors tooling, reducing long term tooling costs.

The inverter-controlled motor reduces energy consumption to a minimum.

The machine is mounted on precision casters for effortless movement around busy workshops and sites

**Mackma** uses only 100% high quality Italian components to ensure long-term reliability.

Testament to the high quality of their machines is Mackma's standard 2 year warranty.



The image shown above is understood as a preliminary indication. MACKMA reserves the right to change form and function which are used exclusively for innovative improvements.

**MACKMA**

GRUPPO MASSARO

Via Volla snc  
03030 Piedimonte San Germano (FR)  
Tel. +39 0776 404326 - 403489  
Fax +39 0776 403460  
info@mackma.com  
www.mackma.com



## SUITABLE FOR SECTORS, SUCH AS:

*Industrial Tools, Tubular furniture  
Automotive/Motorcycle  
Dairy and Marine  
Sport and fitness, Hydraulics  
Factory maintenance... and many others...*



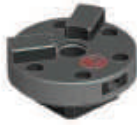
## MAIN TECHNICAL DATA BM60

|  |                        |     |
|--|------------------------|-----|
| Pipe Max Outer Diameter                | 60                     | mm  |
| Max Torque                             | 8000                   | N/m |
| Diameter using FE – 42 kg/mq           | 60x4                   | mm  |
| Diameter using FE – 35 kg/mq           | 64x5                   | mm  |
| Diameter using AISI 304/316 – 65 kg/mq | 64x3                   | mm  |
| Maximum radius                         | 380                    | mm  |
| Height of the head                     | 300                    | mm  |
| Projection of the head                 | 360                    | mm  |
| Max curvature angle                    | 180°                   |     |
| Minimum rotation speed                 | 1                      | rpm |
| Maximum rotation speed                 | 2                      | rpm |
| Bending direction                      | rightward and leftward |     |
| Electric tension                       | 440                    | V   |
| Max installed power                    | 1,5                    | KW  |
| Weight                                 | 210                    | Kg  |
| Dimensions (WxhxL)                     | 660x1100x1000 mm       |     |
| Operating temperature                  | 0 - 50°                |     |



## NON MANDREL ACCESSORIES & SPARE PARTS FOR BM 60

**CONNECTION 60/76 - BM6007A2**



**CONNECTION 42/48 - BM6042**



**SLIDER - BM6020A**



**DOWEL PIN - BM60LING**



**COUNTER BENDING DIE SPRING - BM4277**



**COUNTER BENDING DIE SPRING - BM6077**



**LEVER - BM76C2**



**PIN FOR COUNTERBENDING DIE SUPPORT - BM4818**



**HANDWHEEL - BM76C1**



**COUNTERBENDING DIE SUPPORT - BM42SP01**



**COUNTERBENDING DIE SUPPORT - BM7630**



**SCREW THREAD- BM7622**



**COUNTERBENDING DIE SCREW (60) - VCGRM8L40**



**ROLL SCREW - VCGRM8L45**



**COUNTERBENDING DIE SCREW - VCGRM6L16**



**TIE BAR SCREW - BM7639BIS**



## NON MANDREL ACCESSORIES & SPARE PARTS FOR BM 60

**POSITION INDICATOR - BM60P**



**TIE BAR BASE - BM7638**



**PIVOT - BM7614A**



**PIVOT PIN - BM7629**



**REDUCTION SHAFT - BM7608BIS**



**SMALL REDUCTION SHAFT - BM4203A2**



**FEMALE NUT - BM6017B**



**SCREW NUT - DADO76**



**TIE BAR - IR76**



**TOP HOLDER - BM7655**



**STIRRUP - BM7637**



**FOOT PEDAL - ROSFP01**



**FOOT PEDAL - BIAFP01**



**CONNECTOR - ROS CCR01**



**CONNECTOR - BIA CCB01**



**EXPERT SYSTEM CONTROL - EXPSC14**



## NON MANDREL ACCESSORIES & SPARE PARTS FOR BM 60

**EMERGENCY BUTTON - EM01**



**GREASE SPRAY CAN - GS400M**



**GRIP - IMP01**



**PEDAL - PD01**



**WORK BUTTON - SWC01**



**DEBURRING VICE - BM76MS**



**TUBE DEBURRING TOOL - BM76SB**



**POSITIONING DEVICE LENGTH 3 M - POS3M60**



**SIMPLY SYSTEM CONTROL - SMPSC14**



**POSITIONING DEVICE LENGTH 6 M - POS6M60**



The images shown above are understood as a preliminary indication.

Mackma Srl reserves the right to change form and function which are used exclusively for innovative improvements.





# BENDING MACHINE BM76 MACKMA

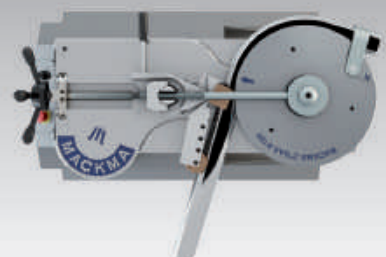
Perfect bends and innovation, like a straight line.

Right and left hand bending  
Underhead bending  
Integrated connection for pipe deburring tool  
Variable speed  
Low energy consumption

**WARRANTY**  
**2 YEARS**  
**MACKMA**



*Pipes Bending machine  
BM76 Guideless,  
electric, semi-automatic  
and manual.*



**NEW  
GENERATION  
2015**

**MACKMA**

GRUPPO MASSARO



# BENDING MACHINE BM76 MACKMA

*Tube and Pipe Bending machine  
BM76, non mandrel,  
electric, semi-automatic.*

The **BM76 Bending Machine** is **THE ONLY non mandrel pipe bending machine** able to bend tubes and pipes to the left or right, by means of a reversible die holder, designed and patented by us. Other unique benefits include a connection for the installation of a useful internal/external tube deburring tool.

The innovative design allows the bending of pipes up to 76 mm in diameter and 3 mm in wall thickness. With a maximum of 380 mm centre line radius it is capable of maximum performance for this size of machine, even in the most demanding markets.

The bend rotation speed [1 to 2 RPM] is monitored by a dedicated inverter, to ensure the correct bending speed according to the diameter and thickness of the tube.

The compact **"cantilever head"** allows bending complex component shapes that may require the tube passing under the gearbox assembly.

The modular design of the bending shaft assembly also allows the use of most competitors tooling, reducing long term tooling costs. The inverter-controlled motor reduces energy consumption to a minimum.

The machine is mounted on precision casters for effortless movement around busy workshops and sites

**Mackma** uses only 100% high quality Italian components to ensure long-term reliability.

Testament to the high quality of their machines is Mackma's standard 2 year warranty.



The image shown above is understood as a preliminary indication. MACKMA reserves the right to change form and function which are used exclusively for innovative improvements.

**MACKMA**

GRUPPO MASSARO

Via Volla snc  
03030 Piedimonte San Germano (FR)  
Tel. +39 0776 404326 - 403489  
Fax +39 0776 403460  
info@mackma.com  
www.mackma.com



## SUITABLE FOR SECTORS, SUCH AS:

*Industrial Tools, Tubular furniture  
Automotive/Motorcycle  
Dairy and Marine  
Sport and fitness, Hydraulics  
Factory maintenance... and many others...*



## MAIN TECHNICAL DATA BM76

|  |                        |     |
|--|------------------------|-----|
| Pipe Max Outer Diameter                | 76                     | mm  |
| Max Torque                             | 10.000                 | N/m |
| Diameter using FE – 42 kg/mq           | 76x3                   | mm  |
| Diameter using FE – 35 kg/mq           | 70x5                   | mm  |
| Diameter using AISI 304/316 – 65 kg/mq | 70x4                   | mm  |
| Maximum radius                         | 380                    | mm  |
| Height of the head                     | 315                    | mm  |
| Projection of the head                 | 384                    | mm  |
| Max curvature angle                    | 180°                   |     |
| Minimum rotation speed                 | 1                      | rpm |
| Maximum rotation speed                 | 2                      | rpm |
| Bending direction                      | rightward and leftward |     |
| Electric tension                       | 440                    | V   |
| Max installed power                    | 1,8                    | KW  |
| Weight                                 | 306                    | Kg  |
| Dimensions (WxHxL)                     | 700x1120x972 mm        |     |
| Operating temperature                  | 0 - 50°                |     |



## NON MANDREL ACCESSORIES & SPARE PARTS FOR BM 76

**CONNECTION 60/76 - BM6007A2**



**CONNECTION 42/48 - BM6042**



**SLIDER - BM6020A**



**DOWEL PIN - BM76LING**



**COUNTER BENDING DIE SPRING - BM4277**



**COUNTER BENDING DIE SPRING - BM6077**



**LEVER - BM76C2**



**PIN FOR COUNTERBENDING DIE SUPPORT - BM4818**



**HANDWHEEL - BM76C1**



**COUNTERBENDING DIE SUPPORT - BM42SP01**



**COUNTERBENDING DIE SUPPORT - BM7630**



**SCREW THREAD- BM7622**



**COUNTERBENDING DIE SCREW (60) - VCGRM8L40**



**ROLL SCREW - VCGRM8L45**



**COUNTERBENDING DIE SCREW - VCGRM6L16**



**TIE BAR SCREW - BM7639BIS**

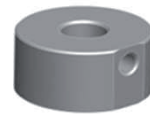


## NON MANDREL ACCESSORIES & SPARE PARTS FOR BM 76

**POSITION INDICATOR - BM60P**



**TIE BAR BASE - BM7638**



**PIVOT - BM7614A**



**PIVOT PIN - BM7629**



**REDUCTION SHAFT - BM7608BIS**



**SMALL REDUCTION SHAFT - BM4203A2**



**FEMALE NUT - BM7617B**



**SCREW NUT - DADO76**



**TIE BAR - IR76**



**TOP HOLDER - BM7655**



**STIRRUP - BM7637**



**FOOT PEDAL - ROSFP01**



**FOOT PEDAL - BIAFP01**



**CONNECTOR - ROS CCR01**



**CONNECTOR - BIA CCB01**



**EXPERT SYSTEM CONTROL - EXPSC14**



## NON MANDREL ACCESSORIES & SPARE PARTS FOR BM 76

**EMERGENCY BUTTON - EM01**



**GREASE SPRAY CAN - GS400M**



**GRIP - IMP01**



**PEDAL - PD01**



**WORK BUTTON - SWC01**



**DEBURRING VICE - BM76MS**



**TUBE DEBURRING TOOL - BM76SB**



**POSITIONING DEVICE LENGTH 3 M - POS3M76**



**SIMPLY SYSTEM CONTROL - SMPSC14**



**POSITIONING DEVICE LENGTH 6 M - POS6M76**



The images shown above are understood as a preliminary indication.

Mackma Srl reserves the right to change form and function which are used exclusively for innovative improvements.





# BENDING MACHINE BM100 MACKMA

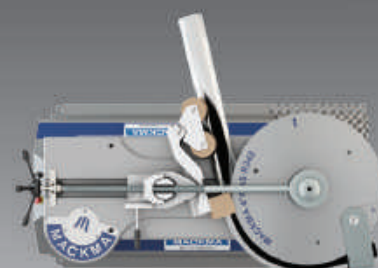
Perfect bends and innovation, like a straight line.

Right and left hand bending  
Variable speed  
Low energy consumption

WARRANTY  
**2 YEARS**  
MACKMA



*Tube and Pipe Bending machine BM100, non mandrel, electric, semi-automatic*



NEW  
GENERATION  
2015

**MACKMA**  
GRUPPO MASSARO



# BENDING MACHINE BM100 MACKMA

Tube and Pipe Bending machine  
BM100, non mandrel,  
electric, semi-automatic

The **BM100 Bending Machine** is **THE ONLY non mandrel pipe bending machine** able to bend tubes and pipes to the left or right, by means of a reversible die holder, designed and patented by us.

The innovative design allows the bending of pipes up to 101,6 mm in diameter and 5,74 mm in wall thickness.

With a maximum of 600 mm centre line radius it is capable of maximum performance for this size of machine, even in the most demanding markets.

The bend rotation speed [max 1,2 RPM] is monitored by a dedicated inverter, to ensure the correct bending speed according to the diameter and thickness of the tube.

The modular design of the bending shaft assembly also allows the use of most competitors tooling, reducing long term tooling costs.

The inverter-controlled motor reduces energy consumption to a minimum.

The machine is mounted on precision casters for effortless movement around busy workshops and sites

**Mackma** uses only 100% high quality Italian components to ensure long-term reliability.

Testament to the high quality of their machines is Mackma's standard 2 year warranty.



The image shown above is understood as a preliminary indication. MACKMA reserves the right to change form and function which are used exclusively for innovative improvements.

**MACKMA**

GRUPPO MASSARO

Via Volla snc  
03030 Piedimonte San Germano (FR)  
Tel. +39 0776 404326 - 403489  
Fax +39 0776 403460  
info@mackma.com  
www.mackma.com



## SUITABLE FOR SECTORS, SUCH AS:

Industrial Tools, Tubular furniture  
Automotive/Motorcycle  
Dairy and Marine  
Sport and fitness, Hydraulics  
Factory maintenance... and many others...



## MAIN TECHNICAL DATA BM100

|  |                        |      |
|--|------------------------|------|
| Pipe Max Outer Diameter                | 114,3 (4")             | mm   |
| Max Torque                             | 22.000                 | N/m  |
| Diameter using FE – 42 kg/mq           | 101,6x5,74             | mm   |
| Diameter using FE – 35 kg/mq           | 114,3x4,78             | mm   |
| Diameter using AISI 304/316 – 65 kg/mq | 88,9x4,78              | mm   |
| Maximum radius                         | 600                    | mm   |
| Max curvature angle                    | 180°                   |      |
| Maximum rotation speed                 | 1,2                    | rpm  |
| Bending direction                      | rightward and leftward |      |
| Electric tension                       | 380/550                | V ac |
| Max installed power                    | 3                      | KW   |
| Weight                                 | 900                    | Kg   |
| Dimensions (WxHxL)                     | 800x1100x1300 mm       |      |
| Operating temperature                  | 0 - 50° C              |      |



**NON MANDREL ACCESSORIES & SPARE PARTS  
FOR BM 100**

**CONNECTION - BM12507**



**SLIDER - BM12520**



**COUNTERBENDING DIE SUPPORT - BM12530**



**PIN FOR COUNTERBENDING DIE SUPPORT - BM12545**



**COUNTER BENDING DIE SPRING - BM12577**



**LEVER - BM125C2**



**PIVOT - BM12514A**



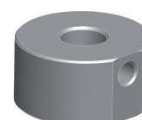
**REDUCTION SHAFT - BM12508**



**FEMALE NUT - BM12517B**



**TIE BAR BASE - BM12538**



**SCREW NUT - DADO125**



**TIE BAR - IR125**



**STIRRUP - BM12537**



**TOP HOLDER - BM12555**



**ROLL SUPPORT - BM12503**



**POSITION INDICATOR - BM125P**



## NON MANDREL ACCESSORIES & SPARE PARTS FOR BM 100

**SCREW THREAD- BM12522**



**HANDWHEEL - BM125C1**



**TIE BAR SCREW - BM12539**



**COUNTERBENDING DIE SCREW - BM125C6**



**FOOT PEDAL - BIAFP01**



**FOOT PEDAL - ROSFP01**



**CONNECTOR - BIA CCB01**



**CONNECTOR - ROS CCR01**



**SIMPLY SYSTEM CONTROL - SMPSC14**



**EXPERT SYSTEM CONTROL - EXPSC14**



**EMERGENCY BUTTON - EM01**



**GREASE SPRAY CAN - GS400M**



**GRIP - IMP01**



**PEDAL - PD01**



**WORK BUTTON - SWC01**



**POSITIONING DEVICE LENGTH 3 M - POS3M100**



**POSITIONING DEVICE LENGTH 6 M - POS6M100**



The images shown above are understood as a preliminary indication.

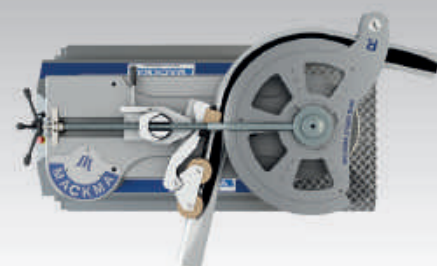
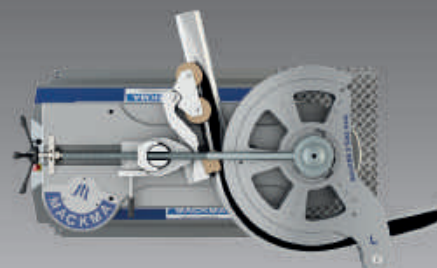
Mackma Srl reserves the right to change form and function which are used exclusively for innovative improvements.

# BENDING MACHINE BM125 MACKMA

Perfect bends and innovation, like a straight line.

Right and left hand bending  
Variable speed  
Low energy consumption

WARRANTY  
**2 YEARS**  
MACKMA



*Tube and Pipe Bending machine BM125, non mandrel, electric, semi-automatic*

NEW  
GENERATION  
2015

**MACKMA**  
GRUPPO MASSARO





# BENDING MACHINE BM125 MACKMA

*Tube and Pipe Bending machine  
BM125, non mandrel,  
electric, semi-automatic*

The **BM125 Bending Machine** is **THE ONLY non mandrel pipe bending machine** able to bend tubes and pipes to the left or right, by means of a reversible die holder, designed and patented by us.

The innovative design allows the bending of pipes up to 114,3 mm in diameter and 8,56 mm in wall thickness. With a maximum of 700 mm centre line radius it is capable of maximum performance for this size of machine, even in the most demanding markets.

The bend rotation speed [max 0,98 RPM] is monitored by a dedicated inverter, to ensure the correct bending speed according to the diameter and thickness of the tube.

The modular design of the bending shaft assembly also allows the use of most competitors tooling, reducing long term tooling costs.

The inverter-controlled motor reduces energy consumption to a minimum.

The machine is mounted on precision casters for effortless movement around busy workshops and sites

**Mackma** uses only 100% high quality Italian components to ensure long-term reliability.

Testament to the high quality of their machines is Mackma's standard 2 year warranty.



The image shown above is understood as a preliminary indication. MACKMA reserves the right to change form and function which are used exclusively for innovative improvements.

**MACKMA**

GRUPPO MASSARO

Via Volla snc  
03030 Piedimonte San Germano (FR)  
Tel. +39 0776 404326 - 403489  
Fax +39 0776 403460  
info@mackma.com  
www.mackma.com



## SUITABLE FOR SECTORS, SUCH AS:

*Industrial Tools, Tubular furniture  
Automotive/Motorcycle  
Dairy and Marine  
Sport and fitness, Hydraulics  
Factory maintenance... and many others...*

**NEW  
GENERATION  
2015**

## MAIN TECHNICAL DATA BM125

|  |                        |      |
|--|------------------------|------|
| Pipe Max Outer Diameter                | 141,3 (5")             | mm   |
| Max Torque                             | 37.000                 | N/m  |
| Diameter using FE – 42 kg/mq           | 114,3x8,56             | mm   |
| Diameter using FE – 35 kg/mq           | 141,3x6,55             | mm   |
| Diameter using AISI 304/316 – 65 kg/mq | 114,3x4,78             | mm   |
| Maximum radius                         | 700                    | mm   |
| Max curvature angle                    | 180°                   |      |
| Maximum rotation speed                 | 0,98                   | rpm  |
| Bending direction                      | rightward and leftward |      |
| Electric tension                       | 380/550                | V ac |
| Max installed power                    | 4                      | KW   |
| Weight                                 | 1200                   | Kg   |
| Dimensions (WxHxL)                     | 800x1200x1400          | mm   |
| Operating temperature                  | 0 - 50° C              |      |

adante

Ed. 1/2015 EN



## NON MANDREL ACCESSORIES & SPARE PARTS FOR BM 125

**CONNECTION - BM12507**



**SLIDER - BM12520**



**COUNTERBENDING DIE SUPPORT - BM12530**



**PIN FOR COUNTERBENDING DIE SUPPORT - BM12545**



**COUNTER BENDING DIE SPRING - BM12577**



**LEVER - BM125C2**



**PIVOT - BM12514A**



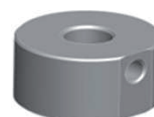
**REDUCTION SHAFT - BM12508**



**FEMALE NUT - BM12517B**



**TIE BAR BASE - BM12538**



**SCREW NUT - DADO125**



**TIE BAR - IR125**



**STIRRUP - BM12537**



**TOP HOLDER - BM12555**



**ROLL SUPPORT - BM12503**



**POSITION INDICATOR - BM125P**



## NON MANDREL ACCESSORIES & SPARE PARTS FOR BM 125

**SCREW THREAD- BM12522**



**HANDWHEEL - BM125C1**



**TIE BAR SCREW - BM12539**



**COUNTERBENDING DIE SCREW - BM125C6**



**FOOT PEDAL - BIAFP01**



**FOOT PEDAL - ROSFP01**



**CONNECTOR - BIA CCB01**



**CONNECTOR - ROS CCR01**



**SIMPLY SYSTEM CONTROL - SMPSC14**



**EXPERT SYSTEM CONTROL - EXPSC14**



**EMERGENCY BUTTON - EM01**



**GREASE SPRAY CAN - GS400M**



**GRIP - IMP01**



**PEDAL - PD01**



**WORK BUTTON - SWC01**



**POSITIONING DEVICE LENGTH 3 M - POS3M125**



**POSITIONING DEVICE LENGTH 6 M - POS6M125**



The images shown above are understood as a preliminary indication.

Mackma Srl reserves the right to change form and function which are used exclusively for innovative improvements.

# BENDING MACHINE BM150 MACKMA

Perfect bends and innovation, like a straight line.

Right and left hand bending  
Variable speed  
Low energy consumption

WARRANTY  
**2 YEARS**  
MACKMA



*Tube and Pipe Bending machine BM150, non mandrel, electric, semi-automatic*



NEW  
GENERATION  
2015

**MACKMA**  
GRUPPO MASSARO





# BENDING MACHINE BM150 MACKMA

*Tube and Pipe Bending machine  
BM150, non mandrel,  
electric, semi-automatic*

The **BM150 Bending Machine** is **THE ONLY non mandrel pipe bending machine** able to bend tubes and pipes to the left or right, by means of a reversible die holder, designed and patented by us.

The innovative design allows the bending of pipes up to 141,3 mm in diameter and 9,52 mm in wall thickness. With a maximum of 850 mm centre line radius it is capable of maximum performance for this size of machine, even in the most demanding markets.

The bend rotation speed [max 1 RPM] is monitored by a dedicated inverter, to ensure the correct bending speed according to the diameter and thickness of the tube.

The modular design of the bending shaft assembly also allows the use of most competitors tooling, reducing long term tooling costs.

The inverter-controlled motor reduces energy consumption to a minimum.

The machine is mounted on precision casters for effortless movement around busy workshops and sites

**Mackma** uses only 100% high quality Italian components to ensure long-term reliability.

Testament to the high quality of their machines is Mackma's standard 2 year warranty.



The image shown above is understood as a preliminary indication. MACKMA reserves the right to change form and function which are used exclusively for innovative improvements.

## SUITABLE FOR SECTORS, SUCH AS:

*Industrial Tools, Tubular furniture  
Automotive/Motorcycle  
Dairy and Marine  
Sport and fitness, Hydraulics  
Factory maintenance... and many others...*

## MAIN TECHNICAL DATA BM150

|  |                        |      |
|--|------------------------|------|
| Pipe Max Outer Diameter                | 168,3 (6")             | mm   |
| Max Torque                             | 70.000                 | N/m  |
| Diameter using FE – 42 kg/mq           | 141,3x9,52             | mm   |
| Diameter using FE – 35 kg/mq           | 168,3x7,11             | mm   |
| Diameter using AISI 304/316 – 65 kg/mq | 141,3x6,55             | mm   |
| Maximum radius                         | 850                    | mm   |
| Max curvature angle                    | 180°                   |      |
| Maximum rotation speed                 | 1                      | rpm  |
| Bending direction                      | rightward and leftward |      |
| Electric tension                       | 380/550                | V ac |
| Max installed power                    | 7,5                    | KW   |
| Weight                                 | 1500                   | Kg   |
| Dimensions (WxHxL)                     | 1000x1200x1600         | mm   |
| Operating temperature                  | 0 - 50° C              |      |

**MACKMA**

GRUPPO MASSARO

Via Volle snc  
03030 Piedimonte San Germano (FR)  
Tel. +39 0776 404326 - 403489  
Fax +39 0776 403460  
info@mackma.com  
www.mackma.com



## NON MANDREL ACCESSORIES & SPARE PARTS FOR BM 150

**CONNECTION - BM20007**



**SLIDER - BM20020**



**COUNTERBENDING DIE SUPPORT - BM20030**



**PIN FOR COUNTERBENDING DIE SUPPORT - BM20045**



**COUNTER BENDING DIE SPRING - BM20077**



**LEVER - BM200C2**



**PIVOT - BM20014A**



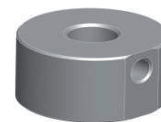
**REDUCTION SHAFT - BM20008**



**FEMALE NUT - BM20017B**



**TIE BAR BASE - BM20038**



**SCREW NUT - DADO200**



**TIE BAR - IR200**



**STIRRUP - BM20037**



**TOP HOLDER - BM20055**



**ROLL SUPPORT - BM2003**



**POSITION INDICATOR - BM200P**



## NON MANDREL ACCESSORIES & SPARE PARTS FOR BM 150

**SCREW THREAD- BM20022**



**HANDWHEEL - BM200C1**



**TIE BAR SCREW - BM20039**



**COUNTERBENDING DIE SCREW - BM200C6**



**FOOT PEDAL - BIAFP01**



**FOOT PEDAL - ROSFP01**



**CONNECTOR - BIA CCB01**



**CONNECTOR - ROS CCR01**



**SIMPLY SYSTEM CONTROL - SMPSC14**



**EXPERT SYSTEM CONTROL - EXPSC14**



**EMERGENCY BUTTON - EM01**



**GREASE SPRAY CAN - GS400M**



**GRIP - IMP01**



**PEDAL - PD01**



**WORK BUTTON - SWC01**



**POSITIONING DEVICE LENGTH 3 M - POS3M150**



**POSITIONING DEVICE LENGTH 6 M - POS6M150**



The images shown above are understood as a preliminary indication.

Mackma Srl reserves the right to change form and function which are used exclusively for innovative improvements.



# BENDING MACHINE BM200 MACKMA

Perfect bends and innovation, like a straight line.

Right and left hand bending  
Variable speed  
Low energy consumption

WARRANTY  
**2 YEARS**  
MACKMA



*Tube and Pipe Bending machine BM200, non mandrel, electric, semi-automatic*



NEW  
GENERATION  
2015

**MACKMA**  
GRUPPO MASSARO



# BENDING MACHINE BM200 MACKMA

*Tube and Pipe Bending machine  
BM200, non mandrel,  
electric, semi-automatic*

The **BM200 Bending Machine** is **THE ONLY non mandrel pipe bending machine** able to bend tubes and pipes to the left or right, by means of a reversible die holder, designed and patented by us.

The innovative design allows the bending of pipes up to 168,3 mm in diameter and 10,97 mm in wall thickness.

With a maximum of 1100 mm centre line radius it is capable of maximum performance for this size of machine, even in the most demanding markets.

The bend rotation speed [max 0,8 RPM] is monitored by a dedicated inverter, to ensure the correct bending speed according to the diameter and thickness of the tube.

The modular design of the bending shaft assembly also allows the use of most competitors tooling, reducing long term tooling costs.

The inverter-controlled motor reduces energy consumption to a minimum.

The machine is mounted on precision casters for effortless movement around busy workshops and sites

**Mackma** uses only 100% high quality Italian components to ensure long-term reliability.

Testament to the high quality of their machines is Mackma's standard 2 year warranty.



The image shown above is understood as a preliminary indication. MACKMA reserves the right to change form and function which are used exclusively for innovative improvements.

## SUITABLE FOR SECTORS, SUCH AS:

*Industrial Tools, Tubular furniture  
Automotive/Motorcycle  
Dairy and Marine  
Sport and fitness, Hydraulics  
Factory maintenance... and many others...*

**NEW  
GENERATION  
2015**

## MAIN TECHNICAL DATA BM200

|  |                        |      |
|--|------------------------|------|
| Pipe Max Outer Diameter                | 219,3 (8")             | mm   |
| Max Torque                             | 115.000                | N/m  |
| Diameter using FE – 42 kg/mq           | 168,3x10,97            | mm   |
| Diameter using FE – 35 kg/mq           | 219,1x6,35 (8")        | mm   |
| Diameter using AISI 304/316 – 65 kg/mq | 168,3x7,11             | mm   |
| Maximum radius                         | 1100                   | mm   |
| Max curvature angle                    | 180°                   |      |
| Maximum rotation speed                 | 0,8                    | rpm  |
| Bending direction                      | rightward and leftward |      |
| Electric tension                       | 380/550                | V ac |
| Max installed power                    | 11                     | KW   |
| Weight                                 | 2200                   | Kg   |
| Dimensions (WxhxL)                     | 1200x1350x1850         | mm   |
| Operating temperature                  | 0 - 50° C              |      |

**MACKMA**

GRUPPO MASSARO

Via Volia snc  
03030 Piedimonte San Germano (FR)  
Tel. +39 0776 404326 - 403489  
Fax +39 0776 403460  
info@mackma.com  
www.mackma.com





## NON MANDREL ACCESSORIES & SPARE PARTS FOR BM 200

**CONNECTION - BM20007**



**SLIDER - BM20020**



**COUNTERBENDING DIE SUPPORT - BM20030**



**PIN FOR COUNTERBENDING DIE SUPPORT - BM20045**



**COUNTER BENDING DIE SPRING - BM20077**



**LEVER - BM200C2**



**PIVOT - BM20014A**



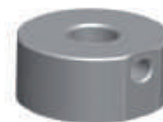
**REDUCTION SHAFT - BM20008**



**FEMALE NUT - BM20017B**



**TIE BAR BASE - BM20038**



**SCREW NUT - DADO200**



**TIE BAR - IR200**



**STIRRUP - BM20037**



**TOP HOLDER - BM20055**



**ROLL SUPPORT - BM2003**



**POSITION INDICATOR - BM200P**





## NON MANDREL ACCESSORIES & SPARE PARTS FOR BM 200

**SCREW THREAD- BM20022**



**HANDWHEEL - BM200C1**



**TIE BAR SCREW - BM20039**



**COUNTERBENDING DIE SCREW - BM200C6**



**FOOT PEDAL - BIAFP01**



**FOOT PEDAL - ROSFP01**



**CONNECTOR - BIA CCB01**



**CONNECTOR - ROS CCR01**



**SIMPLY SYSTEM CONTROL - SMPSC14**



**EXPERT SYSTEM CONTROL - EXPSC14**



**EMERGENCY BUTTON - EM01**



**GREASE SPRAY CAN - GS400M**



**GRIP - IMP01**



**PEDAL - PD01**



**WORK BUTTON - SWC01**



**POSITIONING DEVICE LENGTH 3 M - POS3M200**



**POSITIONING DEVICE LENGTH 6 M - POS6M200**



The images shown above are understood as a preliminary indication.

Mackma Srl reserves the right to change form and function which are used exclusively for innovative improvements.

# BENDING MACHINE BM250 MACKMA

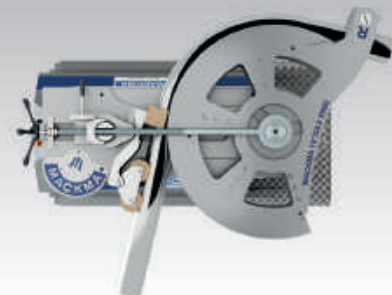
Perfect bends and innovation, like a straight line.

Right and left hand bending  
Variable speed  
Low energy consumption

WARRANTY  
**2 YEARS**  
MACKMA



*Tube and Pipe Bending machine BM250, non mandrel, electric, semi-automatic*



NEW  
GENERATION  
2015

**MACKMA**  
GRUPPO MASSARO





# BENDING MACHINE BM250 MACKMA

*Tube and Pipe Bending machine  
BM250, non mandrel,  
electric, semi-automatic*

The **BM250 Bending Machine** is **THE ONLY non mandrel pipe bending machine** able to bend tubes and pipes to the left or right, by means of a reversible die holder, designed and patented by us.

The innovative design allows the bending of pipes up to 219,1 mm in diameter and 12,7 mm in wall thickness.

With a maximum of 1400 mm centre line radius it is capable of maximum performance for this size of machine, even in the most demanding markets.

The bend rotation speed [max 0,6 RPM] is monitored by a dedicated inverter, to ensure the correct bending speed according to the diameter and thickness of the tube.

The modular design of the bending shaft assembly also allows the use of most competitors tooling, reducing long term tooling costs.

The inverter-controlled motor reduces energy consumption to a minimum.

The machine is mounted on precision casters for effortless movement around busy workshops and sites

**Mackma** uses only 100% high quality Italian components to ensure long-term reliability.

Testament to the high quality of their machines is Mackma's standard 2 year warranty.



The image shown above is understood as a preliminary indication. MACKMA reserves the right to change form and function which are used exclusively for innovative improvements.

**MACKMA**

GRUPPO MASSARO

Via Volla snc  
03030 Piedimonte San Germano (FR)  
Tel. +39 0776 404326 - 403489  
Fax +39 0776 403460  
info@mackma.com  
www.mackma.com



## SUITABLE FOR SECTORS, SUCH AS:

*Industrial Tools, Tubular furniture  
Automotive/Motorcycle  
Dairy and Marine  
Sport and fitness, Hydraulics  
Factory maintenance... and many others...*



## MAIN TECHNICAL DATA BM250

|  |                        |      |
|--|------------------------|------|
| Pipe Max Outer Diameter                | 273 (10")              | mm   |
| Max Torque                             | 230.000                | N/m  |
| Diameter using FE – 42 kg/mq           | 219,1x12,7             | mm   |
| Diameter using FE – 35 kg/mq           | 273x7,8 (10")          | mm   |
| Diameter using AISI 304/316 – 65 kg/mq | 219,1x8,18             | mm   |
| Maximum radius                         | 1400                   | mm   |
| Max curvature angle                    | 180°                   |      |
| Maximum rotation speed                 | 0,6                    | rpm  |
| Bending direction                      | rightward and leftward |      |
| Electric tension                       | 380/550                | V ac |
| Max installed power                    | 22                     | KW   |
| Weight                                 | 3800                   | Kg   |
| Dimensions (WxHxL)                     | 1400x1500x2150         | mm   |
| Operating temperature                  | 0 - 50° C              |      |



## NON MANDREL ACCESSORIES & SPARE PARTS FOR BM 250

**CONNECTION - BM30007**



**SLIDER - BM30020**



**COUNTERBENDING DIE SUPPORT - BM30030**



**PIN FOR COUNTERBENDING DIE SUPPORT - BM30045**



**COUNTER BENDING DIE SPRING - BM30077**



**LEVER - BM300C2**



**PIVOT - BM30014A**



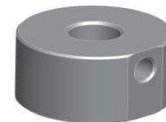
**REDUCTION SHAFT - BM30008**



**FEMALE NUT - BM30017B**



**TIE BAR BASE - BM30038**



**SCREW NUT - DADO300**



**TIE BAR - IR300**



**STIRRUP - BM30037**



**TOP HOLDER - BM30055**



**ROLL SUPPORT - BM3003**



**POSITION INDICATOR - BM300P**



## NON MANDREL ACCESSORIES & SPARE PARTS FOR BM 250

**SCREW THREAD- BM30022**



**HANDWHEEL - BM300C1**



**TIE BAR SCREW - BM30039**



**COUNTERBENDING DIE SCREW - BM300C6**



**FOOT PEDAL - BIAFP01**



**FOOT PEDAL - ROSFP01**



**CONNECTOR - BIA CCB01**



**CONNECTOR - ROS CCR01**



**SIMPLY SYSTEM CONTROL - SMPSC14**



**EXPERT SYSTEM CONTROL - EXPSC14**



**EMERGENCY BUTTON - EM01**



**GREASE SPRAY CAN - GS400M**



**GRIP - IMP01**



**PEDAL - PD01**



**WORK BUTTON - SWC01**



**POSITIONING DEVICE LENGTH 3 M - POS3M250**



**POSITIONING DEVICE LENGTH 6 M - POS6M250**



The images shown above are understood as a preliminary indication.

Mackma Srl reserves the right to change form and function which are used exclusively for innovative improvements.

# BENDING MACHINE BM300 MACKMA

Perfect bends and innovation, like a straight line.

Right and left hand bending  
Variable speed  
Low energy consumption

WARRANTY  
**2 YEARS**  
MACKMA



*Tube and Pipe Bending machine BM300, non mandrel, electric, semi-automatic*



NEW  
GENERATION  
2015

**MACKMA**  
GRUPPO MASSARO





# BENDING MACHINE BM300 MACKMA

*Tube and Pipe Bending machine  
BM300, non mandrel,  
electric, semi-automatic*

The **BM300 Bending Machine** is **THE ONLY non mandrel pipe bending machine** able to bend tubes and pipes to the left or right, by means of a reversible die holder, designed and patented by us.

The innovative design allows the bending of pipes up to 273 mm in diameter and 18,26 mm in wall thickness.

With a maximum of 1700 mm centre line radius it is capable of maximum performance for this size of machine, even in the most demanding markets.

The bend rotation speed [max 0,4 RPM] is monitored by a dedicated inverter, to ensure the correct bending speed according to the diameter and thickness of the tube.

The modular design of the bending shaft assembly also allows the use of most competitors tooling, reducing long term tooling costs.

The inverter-controlled motor reduces energy consumption to a minimum.

The machine is mounted on precision casters for effortless movement around busy workshops and sites

**Mackma** uses only 100% high quality Italian components to ensure long-term reliability.

Testament to the high quality of their machines is Mackma's standard 2 year warranty.



The image shown above is understood as a preliminary indication. MACKMA reserves the right to change form and function which are used exclusively for innovative improvements.

**MACKMA**

GRUPPO MASSARO

Via Volla snc  
03030 Piedimonte San Germano (FR)  
Tel. +39 0776 404326 - 403489  
Fax +39 0776 403460  
info@mackma.com  
www.mackma.com



## SUITABLE FOR SECTORS, SUCH AS:

*Industrial Tools, Tubular furniture  
Automotive/Motorcycle  
Dairy and Marine  
Sport and fitness, Hydraulics  
Factory maintenance... and many others...*



## MAIN TECHNICAL DATA BM300

|  |                        |      |
|--|------------------------|------|
| Pipe Max Outer Diameter                | 323,9 (12")            | mm   |
| Max Torque                             | 500.000                | N/m  |
| Diameter using FE – 42 kg/mq           | 273x18,26              | mm   |
| Diameter using FE – 35 kg/mq           | 323,9x17,47            | mm   |
| Diameter using AISI 304/316 – 65 kg/mq | 273x12,7               | mm   |
| Maximum radius                         | 1700                   | mm   |
| Max curvature angle                    | 180°                   |      |
| Maximum rotation speed                 | 0,4                    | rpm  |
| Bending direction                      | rightward and leftward |      |
| Electric tension                       | 380/550                | V ac |
| Max installed power                    | 50                     | KW   |
| Weight                                 | 6500                   | Kg   |
| Dimensions (WxHxL)                     | 1700x1800x3500         | mm   |
| Operating temperature                  | 0 - 50° C              |      |

## NON MANDREL ACCESSORIES & SPARE PARTS FOR BM 300

**CONNECTION - BM30007**



**SLIDER - BM30020**



**COUNTERBENDING DIE SUPPORT - BM30030**



**PIN FOR COUNTERBENDING DIE SUPPORT - BM30045**



**COUNTER BENDING DIE SPRING - BM30077**



**LEVER - BM300C2**



**PIVOT - BM30014A**



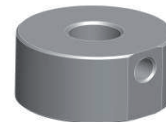
**REDUCTION SHAFT - BM30008**



**FEMALE NUT - BM30017B**



**TIE BAR BASE - BM30038**



**SCREW NUT - DADO300**



**TIE BAR - IR300**



**STIRRUP - BM30037**



**TOP HOLDER - BM30055**



**ROLL SUPPORT - BM3003**



**POSITION INDICATOR - BM300P**



## NON MANDREL ACCESSORIES & SPARE PARTS FOR BM 300

**SCREW THREAD- BM30022**



**HANDWHEEL - BM300C1**



**TIE BAR SCREW - BM30039**



**COUNTERBENDING DIE SCREW - BM300C6**



**FOOT PEDAL - BIAFP01**



**FOOT PEDAL - ROSFP01**



**CONNECTOR - BIA CCB01**



**CONNECTOR - ROS CCR01**



**SIMPLY SYSTEM CONTROL - SMPSC14**



**EXPERT SYSTEM CONTROL - EXPSC14**



**EMERGENCY BUTTON - EM01**



**GREASE SPRAY CAN - GS400M**



**GRIP - IMP01**



**PEDAL - PD01**



**WORK BUTTON - SWC01**



**POSITIONING DEVICE LENGTH 3 M - POS3M300**



**POSITIONING DEVICE LENGTH 6 M - POS6M300**



The images shown above are understood as a preliminary indication.

Mackma Srl reserves the right to change form and function which are used exclusively for innovative improvements.



# NC - S CONTROL SIMPLY



## FUNCTIONAL SPECIFICATIONS

NC-S means Computerized Numerical Control Simple. Thanks to its small size, modern technology and cost, it was possible to obtain a reliable, powerful and economical product . The non mandrel bending machine MACKMA is equipped with this control and allows to realize any geometric curve both to Right and Left bends (Mackma Patent).

Thanks to NC-S Control the machine perform in semiautomatic way any program, simply by setting radius and degrees and tenth of degree, of each bend of project to be realized.

The internal memory can realize up to 9 (Nine) bends programmable to both direction Right and Left. The NC-S has also a variable speed of +/- 20% for the rotation of bend axis.

This control is designed and programmed thanks to specifications of MACKMAS Technical, to meet the needs of all workers who use repetitive the same bend radius.

The SIMPLY as it name implies, is the easiest control to use, even for novices.

## TECHNICAL FEATURES

The NC-S is made of 32-bit microprocessor. All input and output signals are isolated and protected by disturbances from cable or wireless.

The keyboard is a multi-function keys, with INTUITIVE symbology, and does not need Multilingual translation. All buttons are mechanical and protected by a single polycarbonate membrane, suitable to work in any industria environment .

The display of setted and visible running values is possible through a liquid crystal display (LCD) backlight, which allows a good reading from any angle and with any type of light.

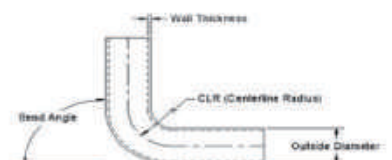
The NC-S (Simply) has 9 (nine) program lines, the operator can choose which program line to use, as from standards there are already preset values, starting from the 15° and from 15° to 15° until you get to the line # 9 with 135 ° setted, but each program line can be changed as operator required.

## NC- S

*Numerical control  
For Mackma  
Bending Machine*

*Presetting  
of bending radius*

*Internal Memory  
for programs  
saving*



# NC - E CONTROL EXPERT



## FUNCTIONAL SPECIFICATIONS

NC-E means Computerized Numerical Control EXPERT.

Thanks to its small size, modern technology and cost, it was possible to obtain a reliable, powerful and economical product . The non mandrel bending machine MACKMA is equipped with this control and allows to realize any geometric curve both to Right and Left bends (Mackma patent)

Thanks to NC-E Control the machine perform in semiautomatic way any program, simply by setting radius and degrees and tenth of degree, of each bend of project to be realized.

The internal memory can realize up to 9 (nine) bends programmable to both direction Right and Left per 99 pages.

The NC-E Control has also a variable speed of +/- 20% for the rotation of bend axis.

This control is designed and programmed thanks to specifications of MACKMAS Technical, to meet the needs of all workers who use repetitive the same bending radius.

The EXPERT as it name implies, is the most completly control, even for the specialist of those sector.

## TECHNICAL FEATURES

The NC-E is made of 32-bit microprocessor.

All input and output signals are isolated and protected by disturbances from cable or wireless. The keyboard is a multi-function keys, with INTUITIVE symbology, and does not need Multilingual translation. All buttons are mechanical and protected by a single polycarbonate membrane, suitable to work in any industria environment . The display of setted and running values and is possible through a liquid crystal display (LCD) backlight, which allows a good reading from any angle and with any type of light.

The NC-S (Simply) has 9 (nine) program lines, the operator can choose which line to use the program, as standards are already preset values, starting from the 15th degrees and continue from 15° to 15° until you get to the line # 9 with 135 ° setted, but each program line can be changed as operator required. There are 99 pages at all and 891 bends inside memory. You can also set the bending direction - Right or Left according to the needs of the piece to be realized.

Each control can be connected to the foot pedal (optional) those electric circuit is already wired and can be accept without further technical interventions. (Plug and Play)

Any MACKMA bending machine is subjected to be tested before shipment. This operation is considered very important to give the Customer the highest satisfaction and a reliable product of high quality.

Our technicians are at your disposal to advise the most suitable model. Various accessories are available to make the machine more suitable to your needs and the types of profile you need to work. Do not forget to communicate always, the bending size of tube, the type of material and the bending radius. All bending machines of "MACKMA" conform to the provisions of "Equipment".

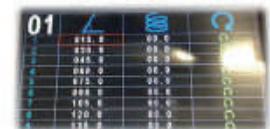
## NC- E

Numerical control  
For Mackma  
Bending Machine

Presetting  
of bending radius

Internal Memory  
for programs  
saving

Internal Memory  
for programs  
saving of **891 programs**



# RING ROLLER WITH TWO MOTORIZED ROLLERS

## RB30m

# MACKMA

### MANUAL RING ROLLER

|                         |                     |
|-------------------------|---------------------|
| Central Roll Force      | 3 Ton.              |
| Distance Between Shafts | 200 mm              |
| Shaft Diameter          | 30 mm               |
| Useful Shaft Length     | 90 mm               |
| Roll Diameter           | 180 mm              |
| Centre Roller Stroke    | 120 mm              |
| Shaft Speed             | 9 rpm               |
| Motor in Kw             | 2x0,55              |
| Operating Voltage       | 380/400             |
| Operating Position      | Vert./Horiz.        |
| Posit. Centre Roll      | Manual with Spindle |
| Antitwist Side-Rollers  | Manual              |
| Display                 | Digital             |
| Number of Programs      | 1                   |
| Activation              | With Selector       |
| Noise Level             | < 70 db             |
| Dimensions              | 800x1200x1600h      |
| Weight                  | 90 Kg               |



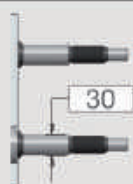
NEW  
GENERATION  
2015

**MACKMA**

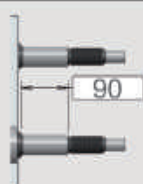
GRUPPO MASSARO



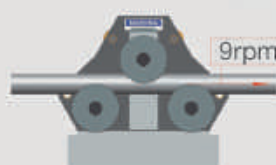
STROKE



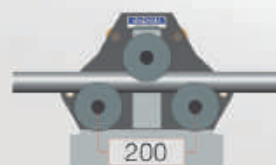
Ø SHAFT



USEFUL



SPEED

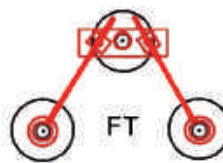
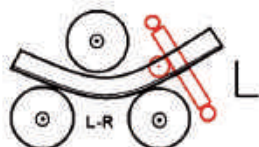
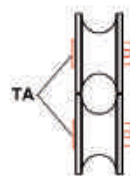
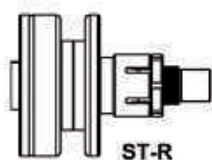


CENTRE DISTANCE



# RING ROLLER WITH TWO MOTORIZED ROLLERS **RB30m**

## ACCESSORIES



## MAXIMUM BENDING CAPACITY

S= STANDARD O= OPTIONAL

| POSITION | MM        | R.MM | S-O                             | POSITION | MM        | R.MM | S-O      |
|----------|-----------|------|---------------------------------|----------|-----------|------|----------|
|          | 35x8      | 250  | ST-R                            |          | 50x12     | 200  | ST-R     |
|          | 15        | 200  | ST-R                            |          |           |      | SP-R     |
|          | 35x35x4   | 400  | ST-R/FT                         |          | 35x35x5   | 200  | ST-R/L-R |
|          | 35x35x5   | 200  | ST-R                            |          | 30x35x4   | 250  | ST-R     |
|          | UPN 50    | 200  | ST-R                            |          | UPN 50    | 300  | ST-R     |
|          | UPN 30    | 1000 | 4 <sup>th</sup> roll<br>ST-R/FT |          |           |      |          |
|          | 30x10x2   | 200  | OR                              |          | 30x15x2   | 200  | OR       |
|          | 35x2      | 180  | TR                              |          | 22        | 200  | ST-R     |
|          | 40x20x2,5 | 700  | SQR                             |          | 30x20x2,5 | 600  | SQR      |

**MACOMA**

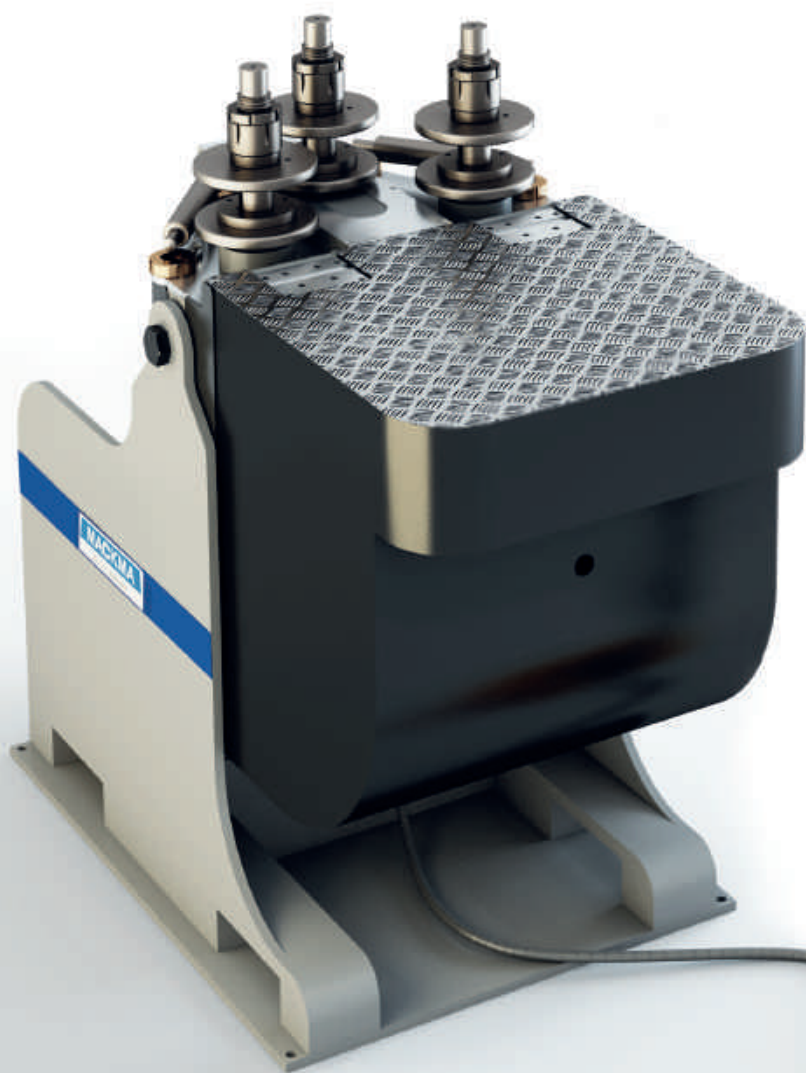
GRUPPO MASSARO

NEW  
GENERATION  
2015

Via Volle snc  
03030 Piedimonte San Germano (FR)  
Tel. +39 0776 404326 - 403489  
Fax +39 0776 403460  
info@mackma.com  
www.mackma.com



# RING ROLLER WITH TWO MOTORIZED ROLLERS **RB40i**



# MACKMA

## RING ROLLER ELECTRO-HYDRAULIC

|                         |                |
|-------------------------|----------------|
| Central Roll Force      | 6 Ton.         |
| Distance Between Shafts | 300 mm         |
| Shaft Diameter          | 40 mm          |
| Useful Shaft Length     | 120 mm         |
| Roll Diameter           | 180 mm         |
| Centre Roller Stroke    | 120 mm         |
| Shaft Speed             | 9 rpm          |
| Motor in Kw             | 3x0,55         |
| Operating Voltage       | 380/400        |
| Operating Position      | Vert./Horiz.   |
| Antitwist Side-Rollers  | Manual         |
| Display                 | Digital        |
| Number of Programs      | 1              |
| Activation              | With footpedal |
| Noise Level             | < 70 db        |
| Dimensions              | 800x1200x1600h |
| Weight                  | 290 Kg         |



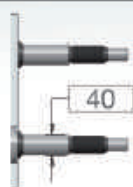
NEW  
GENERATION  
2015

**MACKMA**

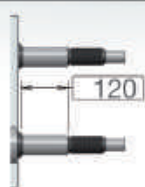
GRUPPO MASSARO



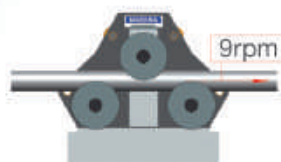
STROKE



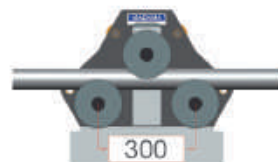
Ø SHAFT



USEFUL



SPEED

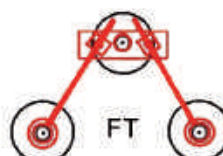
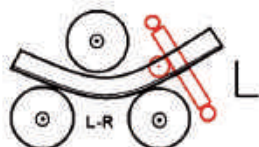
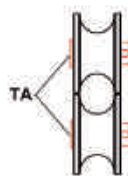
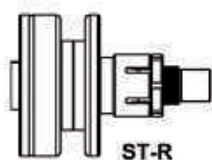


CENTRE DISTANCE



# RING ROLLER WITH TWO MOTORIZED ROLLERS **RB40i**

## ACCESSORIES



## MAXIMUM BENDING CAPACITY

S= STANDARD O= OPTIONAL

| POSITION | MM                   | R.MM        | S-O                             | POSITION | MM                     | R.MM       | S-O                  |
|----------|----------------------|-------------|---------------------------------|----------|------------------------|------------|----------------------|
|          | 50x8<br>50x10        | 250<br>300  | ST-R<br>ST-R/FT                 |          | 60x15<br>60x20         | 130<br>300 | ST-R<br>ST-R/FT      |
|          | 25<br>28             | 250<br>600  | ST-R<br>ST-R/FT                 |          |                        |            | SP-R                 |
|          | 50x50x5<br>60x60x6   | 300<br>500  | ST-R/FT<br>ST-R/FT              |          | 40x40x4<br>45x45x5     | 300<br>600 | ST-R/L-R<br>ST-R/L-R |
|          | 60x30x5,5<br>50x50x5 | 250<br>500  | ST-R<br>ST-R/FT                 |          | 60x30x5,5<br>45x45x6   | 300<br>600 | ST-R<br>ST-R/FT      |
|          | 50x25x5<br>60x30x6   | 250<br>400  | ST-R<br>ST-R/FT                 |          | 50x25x5<br>60x30x6     | 250<br>500 | ST-R<br>ST-R/FT      |
|          | UPN 40               | 1000        | 4 <sup>th</sup> roll<br>ST-R/FT |          |                        |            |                      |
|          | 30x10x2<br>50x25x3   | 200<br>600  | OR<br>OR/FT                     |          | 30x15x2<br>60x30x3     | 200<br>600 | OR<br>OR/FT          |
|          | 50x1,8<br>60x2       | 250<br>800  | TR<br>TR/FT                     |          | 28<br>30               | 150<br>300 | ST-R<br>ST-R/FT      |
|          | 40x40x2<br>45x45x2,5 | 600<br>1000 | SQR<br>SQR/FT                   |          | 40x20x2,5<br>50x25x2,5 | 600<br>700 | SQR<br>SQR/FT        |

**MACMA**

GRUPPO MASSARO

NEW  
GENERATION  
2015

Via Volta snc  
03030 Piedimonte San Germano (FR)  
Tel. +39 0776 404326 - 403489  
Fax +39 0776 403460  
info@mackma.com  
www.mackma.com





# RING ROLLER WITH THREE MOTORIZED ROLLERS

## RB60e

# MACKMA

### RING ROLLER ELECTRICAL WITHOUT HYDRAULIC

|                         |                       |
|-------------------------|-----------------------|
| Central Roll Force      | 10 Ton.               |
| Distance Between Shafts | 360 mm                |
| Shaft Diameter          | 50 mm                 |
| Useful Shaft Length     | 150 mm                |
| Roll Diameter           | 180 mm                |
| Centre Roller Stroke    | 220 mm                |
| Shaft Speed             | 9 rpm                 |
| Motor in Kw             | 3x0,55                |
| Voltage                 | 380/400               |
| Operating Position      | Vert./Horiz.          |
| Pos. Centre Roll        | Mechanical with prec. |
| Antitwist Side-Rollers  | Manual                |
| Display                 | Digital programmable  |
| Number of Programs      | 99                    |
| Activation              | With footpedal        |
| Noise Level             | < 70 db               |
| Dimensions              | 800x1200x1600h        |
| Weight                  | 395 Kg                |



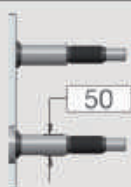
NEW  
GENERATION  
2015

**MACKMA**

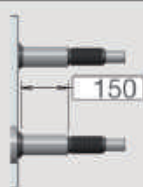
GRUPPO MASSARO



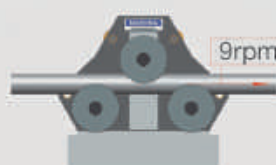
STROKE



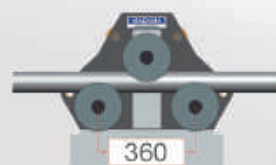
Ø SHAFT



USEFUL



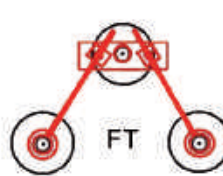
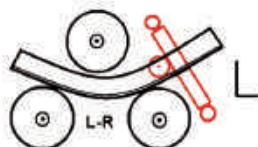
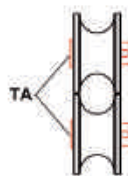
SPEED



CENTRE DISTANCE

# RING ROLLER WITH THREE MOTORIZED ROLLERS **RB60e**

## ACCESSORIES



## MAXIMUM BENDING CAPACITY

S= STANDARD O= OPTIONAL

| POSITION | MM                   | R.MM        | S-O                             | POSITION | MM                 | R.MM       | S-O                  |
|----------|----------------------|-------------|---------------------------------|----------|--------------------|------------|----------------------|
|          | 80x16<br>80x20       | 200<br>600  | ST-R<br>ST-R/FT                 |          | 50x12<br>50x15     | 200<br>500 | ST-R<br>ST-R/FT      |
|          | 30<br>35             | 300<br>700  | ST-R<br>ST-R/FT                 |          |                    |            | SP-R                 |
|          | 50x50x5<br>60x60x6   | 250<br>500  | ST-R/FT<br>ST-R/FT              |          | 40x40x5<br>50x50x6 | 300<br>500 | ST-R/L-R<br>ST-R/L-R |
|          | 60x60x7<br>80x40x7,5 | 300<br>500  | ST-R<br>ST-R/FT                 |          | 50x50x6<br>70x35x6 | 300<br>500 | ST-R<br>ST-R/FT      |
|          | 60x60x6<br>80x45x6   | 200<br>600  | ST-R<br>ST-R/FT                 |          | 50x25x5<br>80x45x6 | 250<br>600 | ST-R<br>ST-R/FT      |
|          | UPN 80               | 2000        | 4 <sup>th</sup> roll<br>ST-R/FT |          |                    |            |                      |
|          | 30x15x2<br>60x30x3   | 200<br>600  | OR<br>OR/FT                     |          | 30x15x2<br>60x30x3 | 200<br>600 | OR<br>OR/FT          |
|          | 60x5<br>80x2         | 500<br>800  | TR<br>TR/FT                     |          | 40<br>70           | 200<br>300 | ST-R<br>ST-R/FT      |
|          | 60x40x3<br>100x40x4  | 500<br>1300 | SQR<br>SQR/FT                   |          | 30x15x2<br>60x40x3 | 150<br>600 | SQR<br>SQR/FT        |

**MACKMA**

GRUPPO MASSARO

NEW  
GENERATION  
2015

Via Volta snc  
03030 Piedimonte San Germano (FR)  
Tel. +39 0776 404326 - 403489  
Fax +39 0776 403460  
info@mackma.com  
www.mackma.com





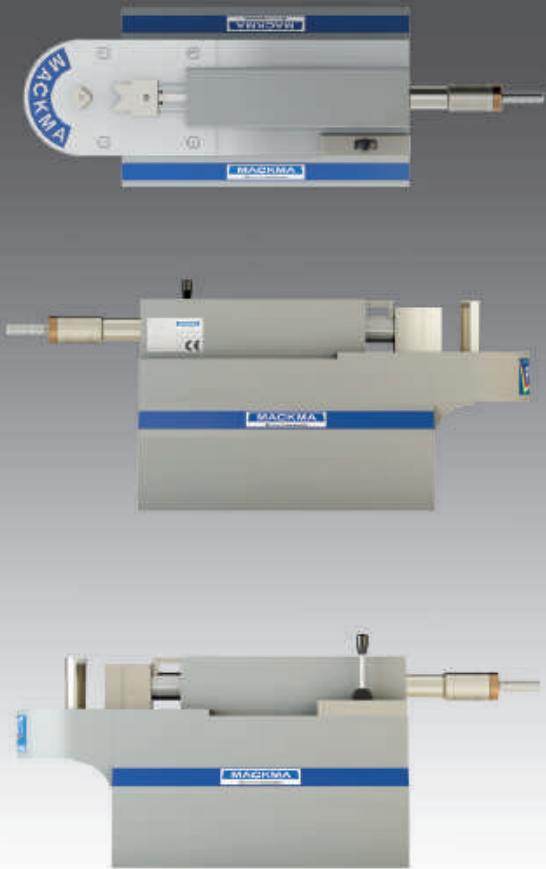
# MACKMA HORIZONTAL PRESS PR10T

A compact 10 Ton, Bench Top Horizontal Press, powered by an efficient, high quality hydraulic pack.

A precision, chromed piston ensures accuracy, with a simple mechanical adjustment of the end stop.

Simple manual control with return spring to the start position.

With a single phase electrical supply, the machine is also a very handy machine for use on site.



NEW  
GENERATION  
2015

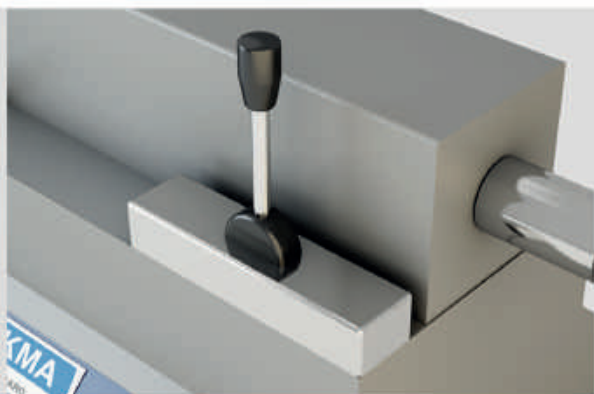


**MACKMA**

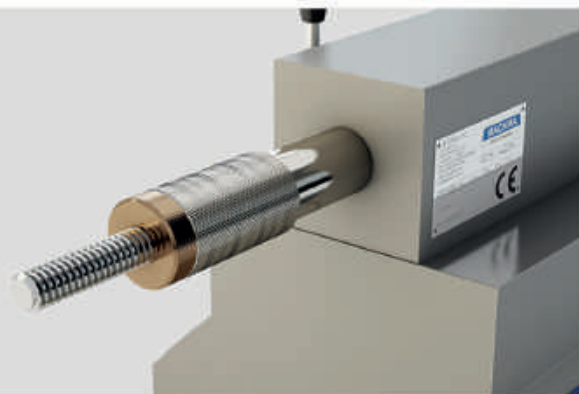
GRUPPO MASSARO



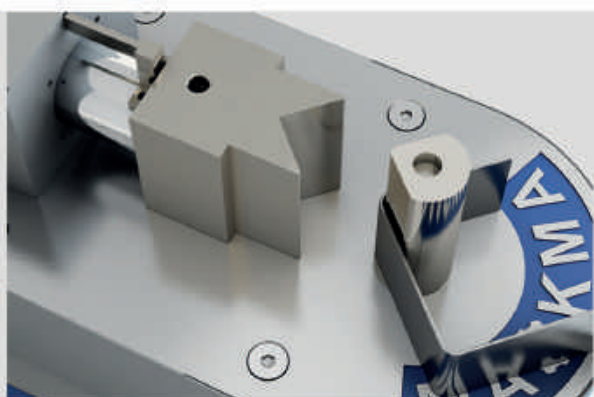
# TECHNICAL FEATURES



Manual lever control



Simple mechanical locking screw for bend stop position



Typical example of a square shaped component



Processing examples

The image shown above is understood as a preliminary indication. MACKMA reserves the right to change form and function which are used exclusively for innovative improvements.

NEW  
GENERATION  
2015

**MACKMA**

GRUPPO MASSARO

Via Volle snc  
03030 Piedimonte San Germano (FR)  
Tel. +39 0776 404326 - 403489  
Fax +39 0776 403460  
info@mackma.com  
www.mackma.com



## SPECIFICATION

|                             |                              |
|-----------------------------|------------------------------|
| Machine dimensions (cm)     | 100x24,5x29                  |
| Weight (Kgs)                | 85                           |
| Bending force in Tons       | 10                           |
| Tool height in mm.          | 100                          |
| Capacity (Mild Steel Plate) | 100x10 (with V width: 110mm) |
| Electrical supply           | 220V, 1ph, 50Hz              |
| Motor power (Kw)            | 0,75                         |



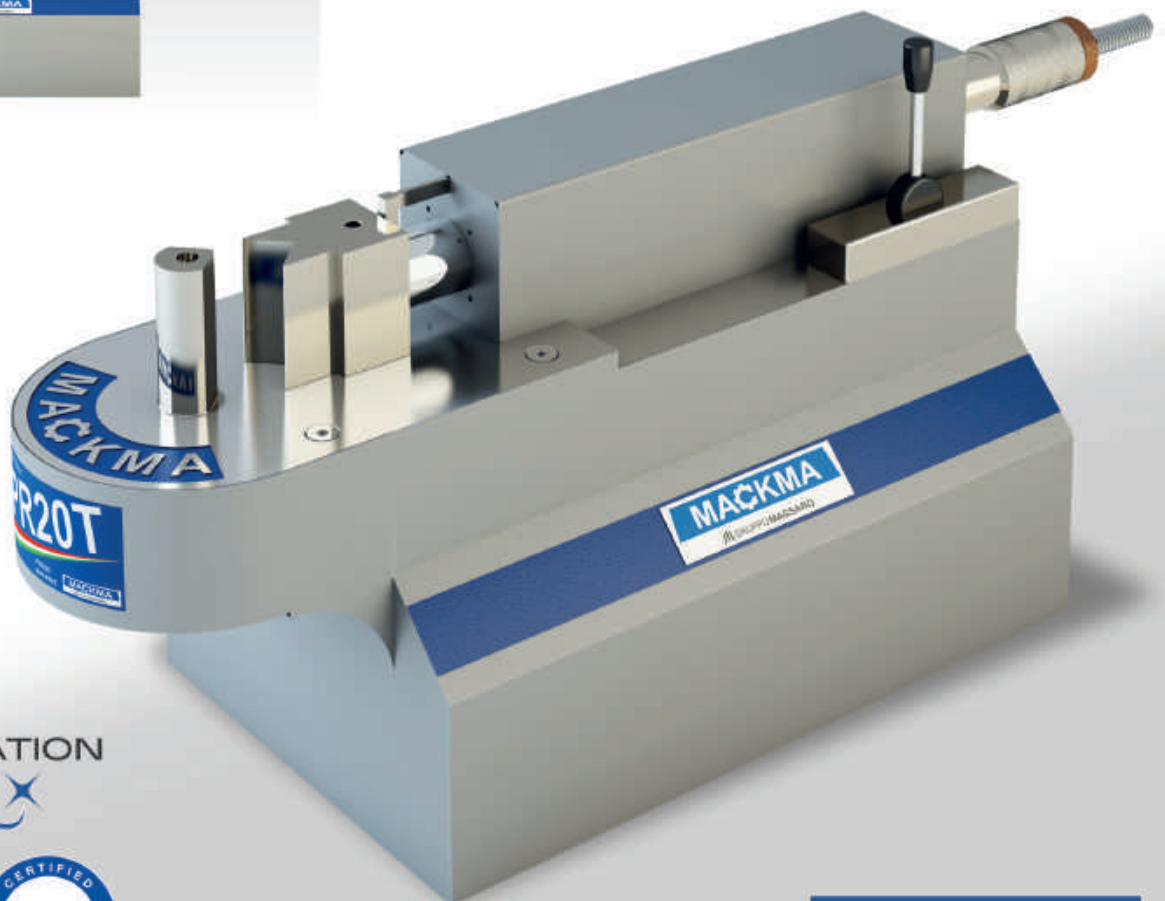
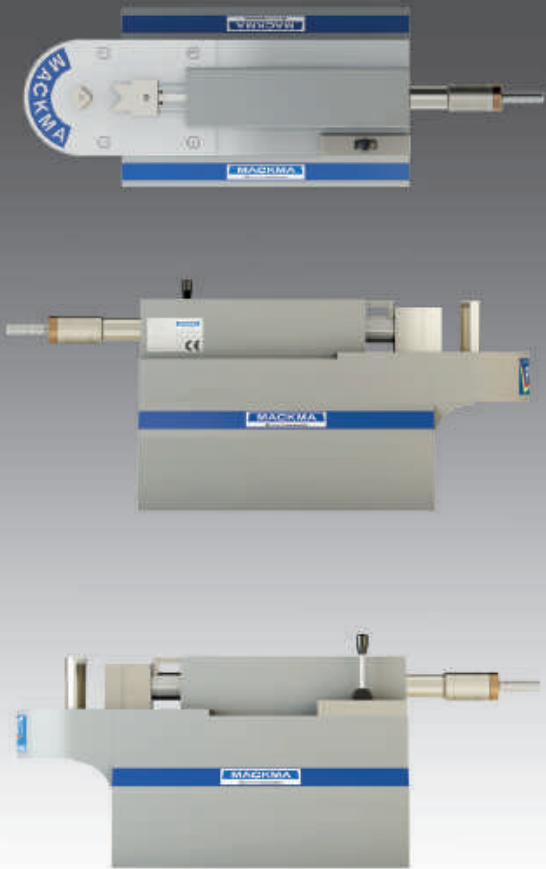
# MACKMA HORIZONTAL PRESS PR20T

A compact 20 Ton, Bench Top Horizontal Press, powered by an efficient, high quality hydraulic pack.

A precision, chromed piston ensures accuracy, with a simple mechanical adjustment of the end stop.

Simple manual control with return spring to the start position.

With a single phase electrical supply, the machine is also a very handy machine for use on site.



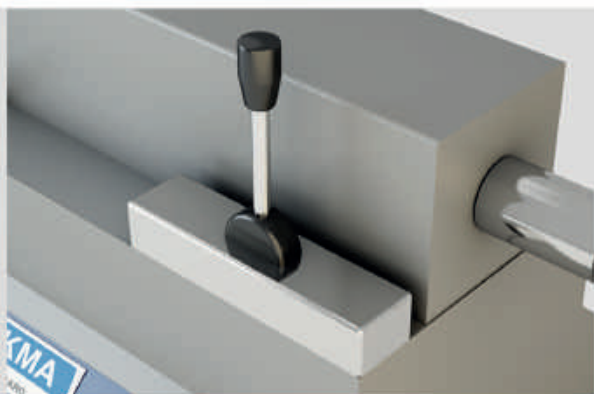
NEW  
GENERATION  
2015



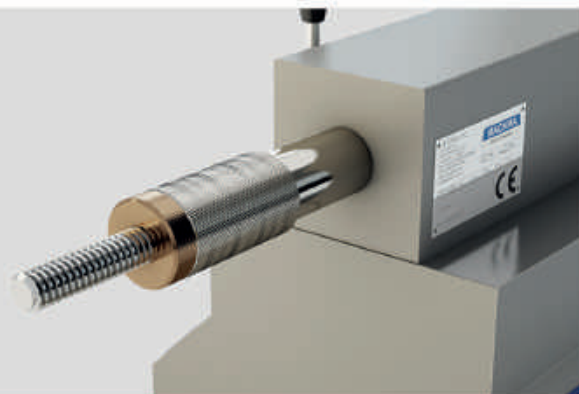
**MACKMA**

GRUPPO MASSARO

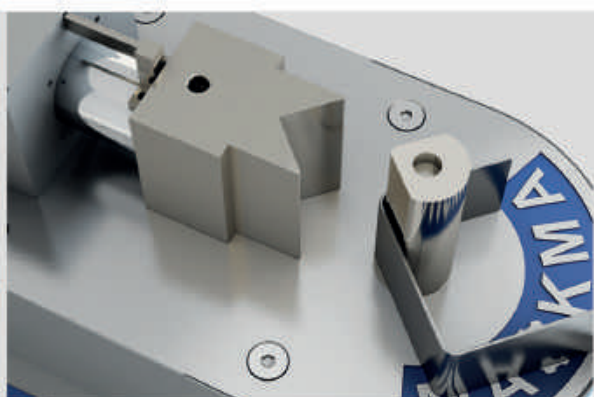
# TECHNICAL FEATURES



Manual lever control



Simple mechanical locking screw for bend stop position



Typical example of a square shaped component



Processing examples

The image shown above is understood as a preliminary indication. MACKMA reserves the right to change form and function which are used exclusively for innovative improvements.

NEW  
GENERATION  
2015

**MACKMA**

GRUPPO MASSARO

Via Volle snc  
03030 Piedimonte San Germano (FR)  
Tel. +39 0776 404326 - 403489  
Fax +39 0776 403460  
info@mackma.com  
www.mackma.com



## SPECIFICATION

|                             |                              |
|-----------------------------|------------------------------|
| Machine dimensions (cm)     | 100x24,5x29                  |
| Weight (Kgs)                | 100                          |
| Bending force in Tons       | 20                           |
| Tool height in mm.          | 100                          |
| Capacity (Mild Steel Plate) | 100x20 (with V width: 150mm) |
| Electrical supply           | 220V, 1ph, 50Hz              |
| Motor power (Kw)            | 0,75                         |





# MACKMA HORIZONTAL PRESS PR30T

A compact 30 Ton, Bench Top Horizontal Press, powered by an efficient, high quality hydraulic pack.

A precision, chromed piston ensures accuracy, with a simple mechanical adjustment of the end stop.

Simple manual control with return spring to the start position.

With a single phase electrical supply, the machine is also a very handy machine for use on site.



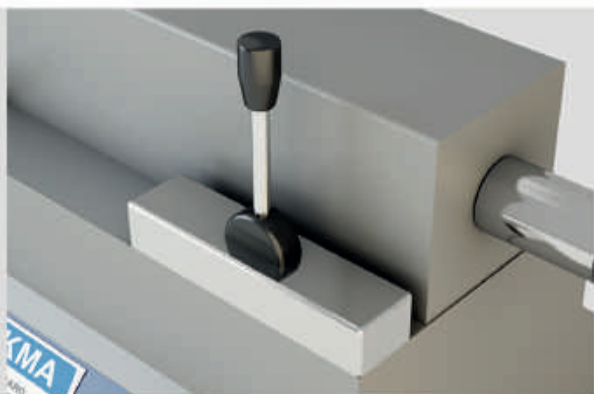
NEW  
GENERATION  
2015



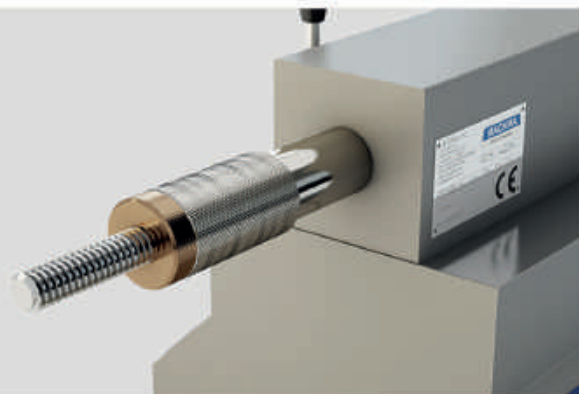
**MACKMA**

GRUPPO MASSARO

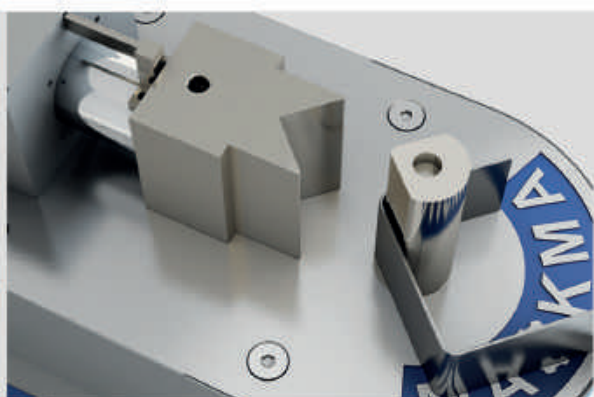
# TECHNICAL FEATURES



Manual lever control



Simple mechanical locking screw for bend stop position



Typical example of a square shaped component



Processing examples

The image shown above is understood as a preliminary indication. MACKMA reserves the right to change form and function which are used exclusively for innovative improvements.

NEW  
GENERATION  
2015

**MACKMA**

GRUPPO MASSARO

Via Volle snc  
03030 Piedimonte San Germano (FR)  
Tel. +39 0776 404326 - 403489  
Fax +39 0776 403460  
info@mackma.com  
www.mackma.com



## SPECIFICATION

|                             |                              |
|-----------------------------|------------------------------|
| Machine dimensions (cm)     | 100x24,5x29                  |
| Weight (Kgs)                | 120                          |
| Bending force in Tons       | 30                           |
| Tool height in mm.          | 100                          |
| Capacity (Mild Steel Plate) | 100x30 (with V width: 200mm) |
| Electrical supply           | 220V, 1ph, 50Hz              |
| Motor power (Kw)            | 0,75                         |





# MACKMA CNC PLASMA CUTTING MACHINE PL10

Cutting area able to take sheet size from 1000x1000 mm

Robust steel frame

Able to cut metal up to a thickness of 20 mm

Accuracy +/- 0,3 mm

Laptop included

Operating System included



NEW  
GENERATION  
2015



**MACKMA**

GRUPPO MASSARO



# TECHNICAL FEATURES



Compatibility with all types of generators

Safty emergency stop button on X-axis



Typical example of plasma shapes

The image shown above is understood as a preliminary indication. MACKMA reserves the right to change form and function which are used exclusively for innovative improvements.

NEW  
GENERATION  
2015

**MACKMA**

GRUPPO MASSARO

Via Volla snc  
03030 Piedimonte San Germano (FR)  
Tel. +39 0776 404326 - 403489  
Fax +39 0776 403460  
info@mackma.com  
www.mackma.com

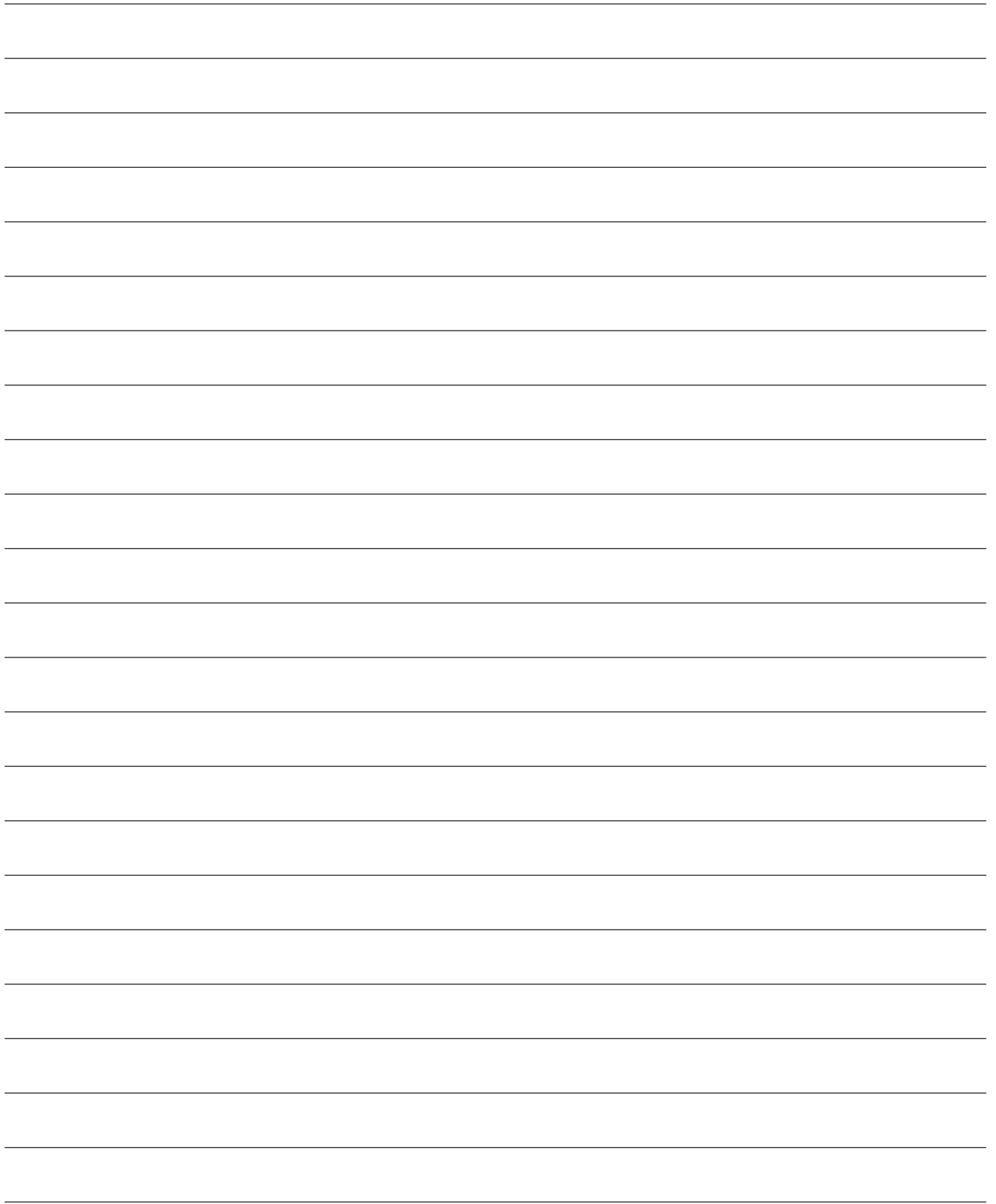


## AVAILABLE STANDARD SIZES:

|           |             |
|-----------|-------------|
| PL-5:     | 550X550mm   |
| PL-10:    | 1050X1050mm |
| PL-15:    | 1550X1550mm |
| PL-15/20: | 1550X2050mm |
| PL-15/30: | 1550X3050mm |

OTHER SIZES UPON REQUEST





**MAÇKMA<sup>®</sup>**

**GRUPPO MASSARO<sup>®</sup>**

Via Volla snc  
03030 Piedimonte San Germano (FR)  
Tel. +39 0776 404326 - 403489  
Fax +39 0776 403460  
info@mackma.com www.mackma.com

