

**MAÇKMA®**

GRUPPO MASSARO®

TECHNICAL INNOVATION,  
EFFICIENT PRECISION.



**ant PipeCraft Tools**  
Werkzeuge und Ausrüstung für die Rohrbearbeitung

**Erik Stadler**

e-mail: [info@antpipecrafttools.at](mailto:info@antpipecrafttools.at)

tel.: +43 664 4222 421



Am Thalbach  
4600 Thalheim bei Wels (Postanschrift)



**MACKMA©:** is a company created to produce the innovative technology for the metal deformation.

Today Mackma© after **only 36 months** of its existence boast on its own products the worldwide patented technologies.

Mackma©today is the absolute leader in the technological innovation applied to the tube bending machinery, mandrel benders and ring rollers.

The “entourage” Mackma© is able to develop **highly innovative technologies** that can change even the simple concept of tube bending.

Mackma© is present today in the European market and is establishing the international strategic agreements that give a possibility to ensure the customer confidence and the efficiency.

Mackma© is the branch of the **MASSARO GROUP** which operates for more than 30 years in the construction industry and the metal carpentry in Italy and in all over the world.

**MACKMA© – Leader of Innovative Technology!**

# BENDING MACHINE BM34 MACKMA

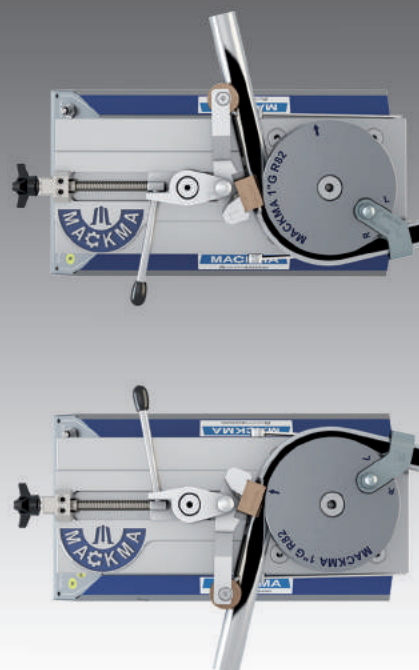
**Perfect bends and innovation, like a straight line.**

Rightward and leftward bending  
Low energy consumption  
Variable speed

WARRANTY  
**2 YEARS**  
MACKMA



*Tube and Pipe Bending machine BM34, non mandrel, electric, semi-automatic.*



NEW  
GENERATION  
2015

**MACKMA**  
GRUPPO MASSARO





# BENDING MACHINE BM34 MACKMA

*Tube and Pipe Bending machine  
BM34, non mandrel,  
electric, semi-automatic.*

The **BM34 Bending Machine** is **THE ONLY non mandrel pipe bending machine** able to bend tubes and pipes to the left or right, by means of a reversible die holder, designed and patented by us. The innovative design allows the bending of pipes up to 33,4 mm in diameter and 3,38 mm in wall thickness. With a maximum of 170 mm centre line radius it is capable of maximum performance for this size of machine, even in the most demanding markets.

The bend rotation speed [2 to 3 RPM] is monitored by a dedicated inverter, to ensure the correct bending speed according to the diameter and thickness of the tube.

The modular design of the bending shaft assembly also allows the use of most competitors tooling, reducing long term tooling costs.

The inverter-controlled motor reduces energy consumption to a minimum.

The machine is mounted on precision casters for effortless movement around busy workshops and sites

**Mackma** uses only 100% high quality Italian components to ensure long-term reliability.

Testament to the high quality of their machines is

Mackma's standard 2 year warranty.



The image shown above is understood as a preliminary indication. MACKMA reserves the right to change form and function which are used exclusively for innovative improvements.

## MACKMA

GRUPPO MASSARO

Via Volla snc  
03030 Piedimonte San Germano (FR)  
Tel. +39 0776 404326 - 403489  
Fax +39 0776 403460  
info@mackma.com  
www.mackma.com



### SUITABLE FOR SECTORS, SUCH AS:

*Industrial Tools, Tubular furniture  
Automotive/Motorcycle  
Dairy and Marine  
Sport and fitness, Hydraulics  
Factory maintenance... and many others...*



### MAIN TECHNICAL DATA BM34

Pipe Max Outer Diameter	38	mm
Max Torque	914	N/m
Diameter using FE – 42 kg/mq	33,4x3,38	mm
Diameter using FE – 35 kg/mq	38x2	mm
Diameter using AISI 304/316 – 65 kg/mq	33,4x1,5	mm
Maximum radius	170	mm
Max curvature angle	180°	
Minimum rotation speed	2	rpm
Maximum rotation speed	3	rpm
Bending direction	rightward and leftward	
Electric tension	220	V
Max installed power	0,55	KW
Weight	33	Kg
Dimensions (WxhxL)	268x310x478	mm
Operating temperature	0 - 50°	



## NON MANDREL ACCESSORIES & SPARE PARTS FOR BM 34

**SHAFT - BM3403A**



**HANDWHEEL - BM34VO**



**SLIDER - BM3410**



**LEVER - BM34BL**



**COUNTER BENDING DIE SPRING - BM4277**



**PIVOT - BM3451A**



**POSITION INDICATOR - BM340P**



**PIN FOR COUNTERBENDING DIE SUPPORT - BM3418**



**ANTIVIBRATION FOOT - BM34PA**



**COUNTERBENDING DIE SUPPORT - BM42SP01**



**COUNTER PROTECTION - BM3454**



**SCREW THREAD- BM3406**



**COUNTERBENDING DIE SCREW - VCGRM6L16**



**ROLL SCREW - VCGRM8L45**



**REDUCTION SHAFT - BM3403A2**



**DOWEL PIN - BM34LING**



## NON MANDREL ACCESSORIES & SPARE PARTS FOR BM 34

**FOOT PEDAL - BIAFP01**



**GREASE SPRAY CAN - GS400M**



**COMMAND BUTTON - CM01**



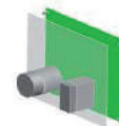
**ENGINE - MT34**



**INSTRUMENT BOARD - SP01**



**ELECTRONIC BOARD 220V - SC220**



**WORK BUTTON - SWC01**



**KEYBOARD - CB01**



**CONNECTOR - BIA CCB01**



**PEDAL - PD01**



**EMERGENCY BUTTON - EM01**



**GRIP - IMP01**



The images shown above are understood as a preliminary indication.

Mackma Srl reserves the right to change form and function which are used exclusively for innovative improvements.

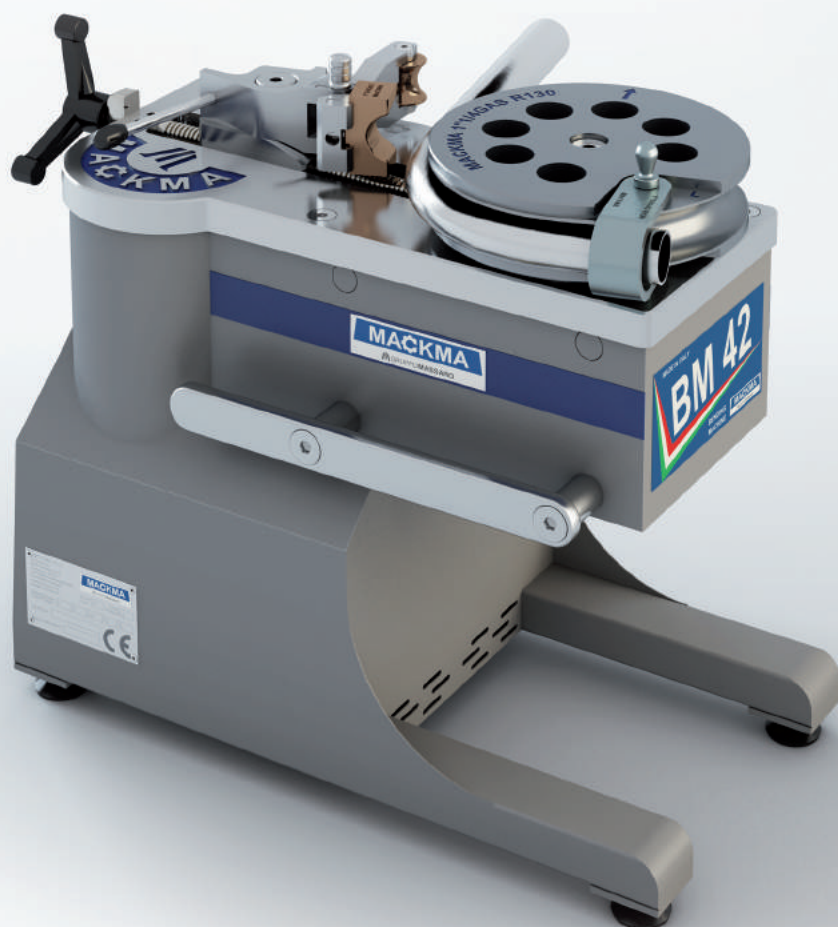


# BENDING MACHINE BM42 MACKMA

**Perfect bends and innovation, like a straight line.**

Rightward and leftward bending  
Underhead curvature  
Variable speed  
Low energy consumption

**WARRANTY**  
**2 YEARS**  
**MACKMA**



**NEW  
GENERATION  
2015**

**MACKMA**  
GRUPPO MASSARO



# BENDING MACHINE BM42 MACKMA

*Tube and Pipe Bending machine  
BM42, non mandrel,  
electric, semi-automatic.*

The **BM42 Bending Machine** is **THE ONLY non mandrel pipe bending machine** able to bend tubes and pipes to the left or right, by means of a reversible die holder, designed and patented by us. The innovative design allows the bending of pipes up to 42 mm in diameter and 3 mm in wall thickness. With a maximum of 260 mm centre line radius it is capable of maximum performance for this size of machine, even in the most demanding markets.

The bend rotation speed [2 to 3 RPM] is monitored by a dedicated inverter, to ensure the correct bending speed according to the diameter and thickness of the tube.

The compact **"cantilever head"** allows bending complex component shapes that may require the tube passing under the gearbox assembly.

The modular design of the bending shaft assembly also allows the use of most competitors tooling, reducing long term tooling costs.

The inverter-controlled motor reduces energy consumption to a minimum.

The machine is mounted on precision casters for effortless movement around busy workshops and sites

**Mackma** uses only 100% high quality Italian components to ensure long-term reliability.

Testament to the high quality of their machines is Mackma's standard 2 year warranty.



The image shown above is understood as a preliminary indication. MACKMA reserves the right to change form and function which are used exclusively for innovative improvements.

**MACKMA**  
GRUPPO MASSARO

Via Volla snc  
03030 Piedimonte San Germano (FR)  
Tel. +39 0776 404326 - 403489  
Fax +39 0776 403460  
info@mackma.com  
www.mackma.com



## SUITABLE FOR SECTORS, SUCH AS:

*Industrial Tools, Tubular furniture  
Automotive/Motorcycle  
Dairy and Marine  
Sport and fitness, Hydraulics  
Factory maintenance... and many others...*



## MAIN TECHNICAL DATA BM42

Pipe Max Outer Diameter	48	mm
Max Torque	1800	N/m
Diameter using FE – 42 kg/mq	42x3	mm
Diameter using FE – 35 kg/mq	48x1,5	mm
Diameter using AISI 304/316 – 65 kg/mq	42x1,5	mm
Maximum radius	260	mm
Height of the head	188	mm
Projection of the head	242	mm
Max curvature angle	180°	
Minimum rotation speed	2	rpm
Maximum rotation speed	3	rpm
Bending direction	rightward and leftward	
Electric tension	220/400	V
Max installed power	0,75	KW
Weight	90	Kg
Dimensions (WxHxL)	347x550x655	mm
Operating temperature	0 - 50°	



**NON MANDREL ACCESSORIES & SPARE PARTS  
FOR BM 42 PORTABLE**

**SHAFT - BM4203A1**



**HANDWHEEL - BM48C1**



**SLIDER - BM4210A**



**LEVER - BM48C2**



**COUNTER BENDING DIE SPRING - BM4277**



**PIVOT - BM4251A**



**POSITION INDICATOR - BM4273**



**PIN FOR COUNTERBENDING DIE SUPPORT - BM4818**



**ANTIVIBRATION FOOT - BM48C5**



**COUNTERBENDING DIE SUPPORT - BM42SP01**



**COUNTER PROTECTION - BM4293**



**SCREW THREAD- BM4206**



**COUNTERBENDING DIE SCREW - VCGRM6L16**



**ROLL SCREW - VCGRM8L45**



**REDUCTION SHAFT - BM4203A2**



**DOWEL PIN - BM48LING**



## NON MANDREL ACCESSORIES & SPARE PARTS FOR BM 42 PORTABLE

**GRIP - IMP01**



**WORK BUTTON - SWC01**



**FOOT PEDAL - ROSFP01**



**GREASE SPRAY CAN - GS400M**



**CONNECTOR - ROS CCR01**



**EMERGENCY BUTTON - EM01**



**PEDAL - PD01**



**SIMPLY SYSTEM CONTROL - SMPSC14**



The images shown above are understood as a preliminary indication.

Mackma Srl reserves the right to change form and function which are used exclusively for innovative improvements.



# BENDING MACHINE BM42 A MACKMA

Perfect bends and innovation, like a straight line.

Right and left hand bending  
Underhead bending  
Integrated connection for pipe deburring tool  
Variable speed  
Low energy consumption



WARRANTY  
**2 YEARS**  
MACKMA

*Tube and Pipe Bending machine BM42 A, non mandrel, electric, semi-automatic.*



NEW  
GENERATION  
2015

**MACKMA**

GRUPPO MASSARO



# BENDING MACHINE BM42 A MACKMA

*Tube and Pipe Bending machine  
BM42 A, non mandrel,  
electric, semi-automatic.*

The **BM42 A Bending Machine** is **THE ONLY non mandrel pipe bending machine** able to bend tubes and pipes to the left or right, by means of a reversible die holder, designed and patented by us.

Other unique benefits include a connection for the installation of a useful internal/external tube deburring tool. The innovative design allows the bending of pipes up to 42 mm in diameter and 3 mm in wall thickness. With a maximum of 260 mm centre line radius it is capable of maximum performance for this size of machine, even in the most demanding markets.

The bend rotation speed [2 to 3 RPM] is monitored by a dedicated inverter, to ensure the correct bending speed according to the diameter and thickness of the tube.

The compact **"cantilever head"** allows bending complex component shapes that may require the tube passing under the gearbox assembly.

The modular design of the bending shaft assembly also allows the use of most competitors tooling, reducing long term tooling costs.

The inverter-controlled motor reduces energy consumption to a minimum. The machine is mounted on precision casters for effortless movement around busy workshops and sites **Mackma** uses only 100% high quality Italian components to ensure long-term reliability.

Testament to the high quality of their machines is Mackma's standard 2 year warranty.



The image shown above is understood as a preliminary indication. MACKMA reserves the right to change form and function which are used exclusively for innovative improvements.

**MACKMA**  
GRUPPO MASSARO

Via Volla snc  
03030 Piedimonte San Germano (FR)  
Tel. +39 0776 404326 - 403489  
Fax +39 0776 403460  
info@mackma.com  
www.mackma.com



## SUITABLE FOR SECTORS, SUCH AS:

*Industrial Tools, Tubular furniture  
Automotive/Motorcycle  
Dairy and Marine  
Sport and fitness, Hydraulics  
Factory maintenance... and many others...*



## MAIN TECHNICAL DATA BM42 A

Pipe Max Outer Diameter	48	mm
Max Torque	1800	N/m
Diameter using FE – 42 kg/mq	42x3	mm
Diameter using FE – 35 kg/mq	48x1,5	mm
Diameter using AISI 304/316 – 65 kg/mq	42x1,5	mm
Maximum radius	260	mm
Height of the head	188	mm
Projection of the head	242	mm
Max curvature angle	180°	
Minimum rotation speed	2	rpm
Maximum rotation speed	3	rpm
Bending direction	rightward and leftward	
Electric tension	220/400	V
Max installed power	0,75	KW
Weight	110	Kg
Dimensions (WxHxL)	440x970x700	mm
Operating temperature	0 - 50°	



## NON MANDREL ACCESSORIES & SPARE PARTS FOR BM 42

**SHAFT - BM4203A1**



**HANDWHEEL - BM48C1**



**SLIDER - BM4210A**



**LEVER - BM48C2**



**COUNTER BENDING DIE SPRING - BM4277**



**PIVOT - BM4251A**



**POSITION INDICATOR - BM4273**



**PIN FOR COUNTERBENDING DIE SUPPORT - BM4818**



**ANTIVIBRATION FOOT - BM48C5**



**COUNTERBENDING DIE SUPPORT - BM42SP01**



**COUNTER PROTECTION - BM4293**



**SCREW THREAD- BM4206**



**COUNTERBENDING DIE SCREW - VCGRM6L16**



**ROLL SCREW - VCGRM8L45**



**REDUCTION SHAFT - BM4203A2**



**DOWEL PIN - BM48LING**



## NON MANDREL ACCESSORIES & SPARE PARTS FOR BM 42

**SWIVEL WHEEL - BM48RG01**



**WORK BUTTON - SWC01**



**FOOT PEDAL - ROSFP01**



**FOOT PEDAL - BIAFP01**



**CONNECTOR - ROS CCR01**



**CONNECTOR - BIA CCB01**



**EXPERT SYSTEM CONTROL - EXPSC14**



**SIMPLY SYSTEM CONTROL - SMPSC14**



**EMERGENCY BUTTON - EM01**



**GREASE SPRAY CAN - GS400M**



**GRIP - IMP01**



**PEDAL - PD01**



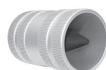
**FIXED WHEEL - BM48RF01**



**DEBURRING VICE - BM76MS**



**TUBE DEBURRING TOOL - BM76SB**



**POSITIONING DEVICE LENGTH 3 M - POS3M42A**



**POSITIONING DEVICE LENGTH 6 M - POS6M42A**



The images shown above are understood as a preliminary indication.

Mackma Srl reserves the right to change form and function which are used exclusively for innovative improvements.

# BENDING MACHINE BM48 MACKMA

Perfect bends and innovation, like a straight line.

Right and left hand bending  
Underhead bending  
Integrated connection for pipe deburring tool  
Variable speed  
Low energy consumption



WARRANTY  
**2 YEARS**  
MACKMA

*Tube and Pipe Bending machine BM48, non mandrel, electric, semi-automatic.*



NEW  
GENERATION  
2015

**MACKMA**

GRUPPO MASSARO





# BENDING MACHINE BM48 MACKMA

*Tube and Pipe Bending machine  
BM48, non mandrel,  
electric, semi-automatic.*

The **BM48 Bending Machine** is **THE ONLY non mandrel pipe bending machine** able to bend tubes and pipes to the left or right, by means of a reversible die holder, designed and patented by us.

Other unique benefits include a connection for the installation of a useful internal/external tube deburring tool. The innovative design allows the bending of pipes up to 48 mm in diameter and 3,5 mm in wall thickness. With a maximum of 260 mm centre line radius it is capable of maximum performance for this size of machine, even in the most demanding markets.

The bend rotation speed [2 to 3 RPM] is monitored by a dedicated inverter, to ensure the correct bending speed according to the diameter and thickness of the tube.

The compact **"cantilever head"** allows bending complex component shapes that may require the tube passing under the gearbox assembly.

The modular design of the bending shaft assembly also allows the use of most competitors tooling, reducing long term tooling costs.

The inverter-controlled motor reduces energy consumption to a minimum. The machine is mounted on precision casters for effortless movement around busy workshops and sites **Mackma** uses only 100% high quality Italian components to ensure long-term reliability.

Testament to the high quality of their machines is Mackma's standard 2 year warranty.



The image shown above is understood as a preliminary indication. MACKMA reserves the right to change form and function which are used exclusively for innovative improvements.



Via Volla snc  
03030 Piedimonte San Germano (FR)  
Tel. +39 0776 404326 - 403489  
Fax +39 0776 403460  
info@mackma.com  
www.mackma.com



## SUITABLE FOR SECTORS, SUCH AS:

*Industrial Tools, Tubular furniture  
Automotive/Motorcycle  
Dairy and Marine  
Sport and fitness, Hydraulics  
Factory maintenance... and many others...*



## MAIN TECHNICAL DATA BM48

Pipe Max Outer Diameter	48	mm
Max Torque	2400	N/m
Diameter using FE – 42 kg/mq	48x3,5	mm
Diameter using FE – 35 kg/mq	48x4	mm
Diameter using AISI 304/316 – 65 kg/mq	48x2	mm
Maximum radius	260	mm
Height of the head	188	mm
Projection of the head	285	mm
Max curvature angle	180°	
Minimum rotation speed	2	rpm
Maximum rotation speed	3	rpm
Bending direction	rightward and leftward	
Electric tension	220/400	V
Max installed power	1,1	KW
Weight	110	Kg
Dimensions (WxHxL)	440x970x700	mm
Operating temperature	0 - 50°	



## NON MANDREL ACCESSORIES & SPARE PARTS FOR BM 48

**SHAFT - BM4203A1**



**HANDWHEEL - BM48C1**



**SLIDER - BM4210A**



**LEVER - BM48C2**



**COUNTER BENDING DIE SPRING - BM4277**



**PIVOT - BM4251A**



**POSITION INDICATOR - BM4273**



**PIN FOR COUNTERBENDING DIE SUPPORT - BM4818**



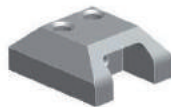
**ANTIVIBRATION FOOT - BM48C5**



**COUNTERBENDING DIE SUPPORT - BM42SP01**



**COUNTER PROTECTION - BM4293**



**SCREW THREAD- BM4206**



**COUNTERBENDING DIE SCREW - VCGRM6L16**



**ROLL SCREW - VCGRM8L45**



**REDUCTION SHAFT - BM4203A2**



**FIXED WHEEL - BM48RF01**



## NON MANDREL ACCESSORIES & SPARE PARTS FOR BM 48

**SWIVEL WHEEL - BM48RG01**



**DOWEL PIN - BM48LING**



**FOOT PEDAL - ROSFP01**



**FOOT PEDAL - BIAFP01**



**CONNECTOR - ROS CCR01**



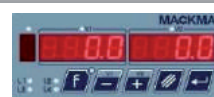
**CONNECTOR - BIA CCB01**



**EXPERT SYSTEM CONTROL - EXPSC14**



**SIMPLY SYSTEM CONTROL - SMPSC14**



**EMERGENCY BUTTON - EM01**



**GREASE SPRAY CAN - GS400M**



**GRIP - IMP01**



**PEDAL - PD01**



**WORK BUTTON - SWC01**



**DEBURRING VICE - BM76MS**



**TUBE DEBURRING TOOL - BM76SB**



**POSITIONING DEVICE LENGTH 3 M - POS3M48**



**POSITIONING DEVICE LENGTH 6 M - POS6M48**



The images shown above are understood as a preliminary indication.

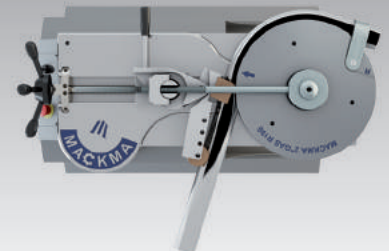
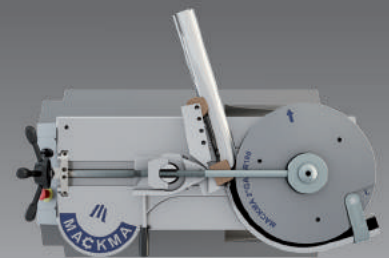
Mackma Srl reserves the right to change form and function which are used exclusively for innovative improvements.

# BENDING MACHINE BM60 MACKMA

Perfect bends and innovation, like a straight line.

Right and left hand bending  
Underhead bending  
Integrated connection for pipe deburring tool  
Variable speed  
Low energy consumption

WARRANTY  
**2 YEARS**  
MACKMA



NEW  
GENERATION  
2015

**MACKMA**

GRUPPO MASSARO



*Tube and Pipe Bending machine BM60, non mandrel, electric, semi-automatic.*



# BENDING MACHINE BM60 MACKMA

*Tube and Pipe Bending machine  
BM60, non mandrel,  
electric, semi-automatic.*

The **BM60 Bending Machine** is **THE ONLY non mandrel pipe bending machine** able to bend tubes and pipes to the left or right, by means of a reversible die holder, designed and patented by us. Other unique benefits include a connection for the installation of a useful internal/external tube deburring tool.

The innovative design allows the bending of pipes up to 60 mm in diameter and 4 mm in wall thickness. With a maximum of 380 mm centre line radius it is capable of maximum performance for this size of machine, even in the most demanding markets.

The bend rotation speed [1 to 2 RPM] is monitored by a dedicated inverter, to ensure the correct bending speed according to the diameter and thickness of the tube.

The compact "cantilever head" allows bending complex component shapes that may require the tube passing under the gearbox assembly.

The modular design of the bending shaft assembly also allows the use of most competitors tooling, reducing long term tooling costs.

The inverter-controlled motor reduces energy consumption to a minimum.

The machine is mounted on precision casters for effortless movement around busy workshops and sites

**Mackma** uses only 100% high quality Italian components to ensure long-term reliability.

Testament to the high quality of their machines is Mackma's standard 2 year warranty.



The image shown above is understood as a preliminary indication.  
MACKMA reserves the right to change form and function which  
are used exclusively for innovative improvements.

## MACKMA

GRUPPO MASSARO

Via Volla snc  
03030 Piedimonte San Germano (FR)  
Tel. +39 0776 404326 - 403489  
Fax +39 0776 403460  
info@mackma.com  
www.mackma.com



### SUITABLE FOR SECTORS, SUCH AS:

*Industrial Tools, Tubular furniture  
Automotive/Motorcycle  
Dairy and Marine  
Sport and fitness, Hydraulics  
Factory maintenance... and many others...*



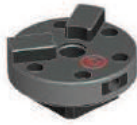
### MAIN TECHNICAL DATA BM60

Pipe Max Outer Diameter	60	mm
Max Torque	8000	N/m
Diameter using FE – 42 kg/mq	60x4	mm
Diameter using FE – 35 kg/mq	64x5	mm
Diameter using AISI 304/316 – 65 kg/mq	64x3	mm
Maximum radius	380	mm
Height of the head	300	mm
Projection of the head	360	mm
Max curvature angle	180°	
Minimum rotation speed	1	rpm
Maximum rotation speed	2	rpm
Bending direction	rightward and leftward	
Electric tension	440	V
Max installed power	1,5	KW
Weight	210	Kg
Dimensions (WxhxL)	660x1100x1000 mm	
Operating temperature	0 - 50°	



## NON MANDREL ACCESSORIES & SPARE PARTS FOR BM 60

**CONNECTION 60/76 - BM6007A2**



**CONNECTION 42/48 - BM6042**



**SLIDER - BM6020A**



**DOWEL PIN - BM60LING**



**COUNTER BENDING DIE SPRING - BM4277**



**COUNTER BENDING DIE SPRING - BM6077**



**LEVER - BM76C2**



**PIN FOR COUNTERBENDING DIE SUPPORT - BM4818**



**HANDWHEEL - BM76C1**



**COUNTERBENDING DIE SUPPORT - BM42SP01**



**COUNTERBENDING DIE SUPPORT - BM7630**



**SCREW THREAD- BM7622**



**COUNTERBENDING DIE SCREW (60) - VCGRM8L40**



**ROLL SCREW - VCGRM8L45**



**COUNTERBENDING DIE SCREW - VCGRM6L16**



**TIE BAR SCREW - BM7639BIS**

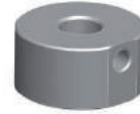


## NON MANDREL ACCESSORIES & SPARE PARTS FOR BM 60

**POSITION INDICATOR - BM60P**



**TIE BAR BASE - BM7638**



**PIVOT - BM7614A**



**PIVOT PIN - BM7629**



**REDUCTION SHAFT - BM7608BIS**



**SMALL REDUCTION SHAFT - BM4203A2**



**FEMALE NUT - BM6017B**



**SCREW NUT - DADO76**



**TIE BAR - IR76**



**TOP HOLDER - BM7655**



**STIRRUP - BM7637**



**FOOT PEDAL - ROSFP01**



**FOOT PEDAL - BIAFP01**



**CONNECTOR - ROS CCR01**



**CONNECTOR - BIA CCB01**



**EXPERT SYSTEM CONTROL - EXPSC14**



## NON MANDREL ACCESSORIES & SPARE PARTS FOR BM 60

**EMERGENCY BUTTON - EM01**



**GREASE SPRAY CAN - GS400M**



**GRIP - IMP01**



**PEDAL - PD01**



**WORK BUTTON - SWC01**



**DEBURRING VICE - BM76MS**



**TUBE DEBURRING TOOL - BM76SB**



**POSITIONING DEVICE LENGTH 3 M - POS3M60**



**SIMPLY SYSTEM CONTROL - SMPSC14**



**POSITIONING DEVICE LENGTH 6 M - POS6M60**



The images shown above are understood as a preliminary indication.

Mackma Srl reserves the right to change form and function which are used exclusively for innovative improvements.



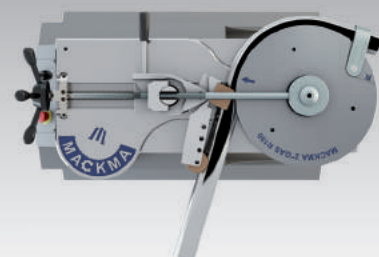
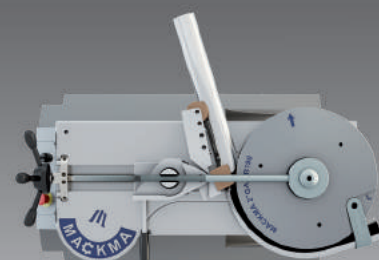


# BENDING MACHINE BM76 MACKMA

Perfect bends and innovation, like a straight line.

Right and left hand bending  
Underhead bending  
Integrated connection for pipe deburring tool  
Variable speed  
Low energy consumption

WARRANTY  
**2 YEARS**  
MACKMA



NEW  
GENERATION  
2015

**MACKMA**

GRUPPO MASSARO



# BENDING MACHINE BM76 MACKMA

*Tube and Pipe Bending machine  
BM76, non mandrel,  
electric, semi-automatic.*

The **BM76 Bending Machine** is **THE ONLY non mandrel pipe bending machine** able to bend tubes and pipes to the left or right, by means of a reversible die holder, designed and patented by us. Other unique benefits include a connection for the installation of a useful internal/external tube deburring tool.

The innovative design allows the bending of pipes up to 76 mm in diameter and 3 mm in wall thickness. With a maximum of 380 mm centre line radius it is capable of maximum performance for this size of machine, even in the most demanding markets.

The bend rotation speed [1 to 2 RPM] is monitored by a dedicated inverter, to ensure the correct bending speed according to the diameter and thickness of the tube.

The compact **"cantilever head"** allows bending complex component shapes that may require the tube passing under the gearbox assembly.

The modular design of the bending shaft assembly also allows the use of most competitors tooling, reducing long term tooling costs. The inverter-controlled motor reduces energy consumption to a minimum.

The machine is mounted on precision casters for effortless movement around busy workshops and sites

**Mackma** uses only 100% high quality Italian components to ensure long-term reliability.

Testament to the high quality of their machines is Mackma's standard 2 year warranty.



The image shown above is understood as a preliminary indication. MACKMA reserves the right to change form and function which are used exclusively for innovative improvements.

## MACKMA

GRUPPO MASSARO

Via Volla snc  
03030 Piedimonte San Germano (FR)  
Tel. +39 0776 404326 - 403489  
Fax +39 0776 403460  
info@mackma.com  
www.mackma.com



### SUITABLE FOR SECTORS, SUCH AS:

*Industrial Tools, Tubular furniture  
Automotive/Motorcycle  
Dairy and Marine  
Sport and fitness, Hydraulics  
Factory maintenance... and many others...*



### MAIN TECHNICAL DATA BM76

Pipe Max Outer Diameter	76	mm
Max Torque	10.000	N/m
Diameter using FE – 42 kg/mq	76x3	mm
Diameter using FE – 35 kg/mq	70x5	mm
Diameter using AISI 304/316 – 65 kg/mq	70x4	mm
Maximum radius	380	mm
Height of the head	315	mm
Projection of the head	384	mm
Max curvature angle	180°	
Minimum rotation speed	1	rpm
Maximum rotation speed	2	rpm
Bending direction	rightward and leftward	
Electric tension	440	V
Max installed power	1,8	KW
Weight	306	Kg
Dimensions (WxHxL)	700x1120x972 mm	
Operating temperature	0 - 50°	



## NON MANDREL ACCESSORIES & SPARE PARTS FOR BM 76

**CONNECTION 60/76 - BM6007A2**



**CONNECTION 42/48 - BM6042**



**SLIDER - BM6020A**



**DOWEL PIN - BM76LING**



**COUNTER BENDING DIE SPRING - BM4277**



**COUNTER BENDING DIE SPRING - BM6077**



**LEVER - BM76C2**



**PIN FOR COUNTERBENDING DIE SUPPORT - BM4818**



**HANDWHEEL - BM76C1**



**COUNTERBENDING DIE SUPPORT - BM42SP01**



**COUNTERBENDING DIE SUPPORT - BM7630**



**SCREW THREAD- BM7622**



**COUNTERBENDING DIE SCREW (60) - VCGRM8L40**



**ROLL SCREW - VCGRM8L45**



**COUNTERBENDING DIE SCREW - VCGRM6L16**



**TIE BAR SCREW - BM7639BIS**

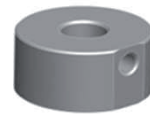


## NON MANDREL ACCESSORIES & SPARE PARTS FOR BM 76

**POSITION INDICATOR - BM60P**



**TIE BAR BASE - BM7638**



**PIVOT - BM7614A**



**PIVOT PIN - BM7629**



**REDUCTION SHAFT - BM7608BIS**



**SMALL REDUCTION SHAFT - BM4203A2**



**FEMALE NUT - BM7617B**



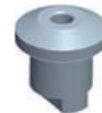
**SCREW NUT - DADO76**



**TIE BAR - IR76**



**TOP HOLDER - BM7655**



**STIRRUP - BM7637**



**FOOT PEDAL - ROSFP01**



**FOOT PEDAL - BIAFP01**



**CONNECTOR - ROS CCR01**



**CONNECTOR - BIA CCB01**



**EXPERT SYSTEM CONTROL - EXPSC14**



## NON MANDREL ACCESSORIES & SPARE PARTS FOR BM 76

**EMERGENCY BUTTON - EM01**



**GREASE SPRAY CAN - GS400M**



**GRIP - IMP01**



**PEDAL - PD01**



**WORK BUTTON - SWC01**



**DEBURRING VICE - BM76MS**



**TUBE DEBURRING TOOL - BM76SB**



**POSITIONING DEVICE LENGTH 3 M - POS3M76**



**SIMPLY SYSTEM CONTROL - SMPSC14**



**POSITIONING DEVICE LENGTH 6 M - POS6M76**



The images shown above are understood as a preliminary indication.

Mackma Srl reserves the right to change form and function which are used exclusively for innovative improvements.





# BENDING MACHINE BM100 MACKMA

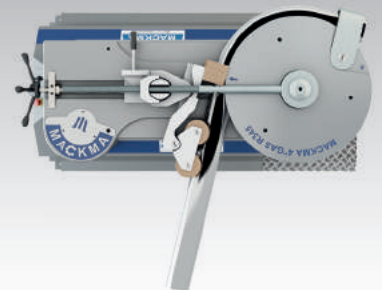
Perfect bends and innovation, like a straight line.

Right and left hand bending  
Variable speed  
Low energy consumption

WARRANTY  
**2 YEARS**  
MACKMA



*Tube and Pipe Bending machine BM100, non mandrel, electric, semi-automatic*



NEW  
GENERATION  
2015

**MACKMA**  
GRUPPO MASSARO



# BENDING MACHINE BM100 MACKMA

Tube and Pipe Bending machine  
BM100, non mandrel,  
electric, semi-automatic

The **BM100 Bending Machine** is **THE ONLY non mandrel pipe bending machine** able to bend tubes and pipes to the left or right, by means of a reversible die holder, designed and patented by us.

The innovative design allows the bending of pipes up to 101,6 mm in diameter and 5,74 mm in wall thickness.

With a maximum of 600 mm centre line radius it is capable of maximum performance for this size of machine, even in the most demanding markets.

The bend rotation speed [max 1,2 RPM] is monitored by a dedicated inverter, to ensure the correct bending speed according to the diameter and thickness of the tube.

The modular design of the bending shaft assembly also allows the use of most competitors tooling, reducing long term tooling costs.

The inverter-controlled motor reduces energy consumption to a minimum.

The machine is mounted on precision casters for effortless movement around busy workshops and sites

**Mackma** uses only 100% high quality Italian components to ensure long-term reliability.

Testament to the high quality of their machines is Mackma's standard 2 year warranty.



The image shown above is understood as a preliminary indication. MACKMA reserves the right to change form and function which are used exclusively for innovative improvements.

## MACKMA

GRUPPO MASSARO

Via Volla snc  
03030 Piedimonte San Germano (FR)  
Tel. +39 0776 404326 - 403489  
Fax +39 0776 403460  
info@mackma.com  
www.mackma.com



### SUITABLE FOR SECTORS, SUCH AS:

Industrial Tools, Tubular furniture  
Automotive/Motorcycle  
Dairy and Marine  
Sport and fitness, Hydraulics  
Factory maintenance... and many others...



### MAIN TECHNICAL DATA BM100

Pipe Max Outer Diameter	114,3 (4")	mm
Max Torque	22.000	N/m
Diameter using FE – 42 kg/mq	101,6x5,74	mm
Diameter using FE – 35 kg/mq	114,3x4,78	mm
Diameter using AISI 304/316 – 65 kg/mq	88,9x4,78	mm
Maximum radius	600	mm
Max curvature angle	180°	
Maximum rotation speed	1,2	rpm
Bending direction	rightward and leftward	
Electric tension	380/550	V ac
Max installed power	3	KW
Weight	900	Kg
Dimensions (WxhxL)	800x1100x1300	mm
Operating temperature	0 - 50° C	



**NON MANDREL ACCESSORIES & SPARE PARTS  
FOR BM 100**

**CONNECTION - BM12507**



**SLIDER - BM12520**



**COUNTERBENDING DIE SUPPORT - BM12530**



**PIN FOR COUNTERBENDING DIE SUPPORT - BM12545**



**COUNTER BENDING DIE SPRING - BM12577**



**LEVER - BM125C2**



**PIVOT - BM12514A**



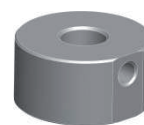
**REDUCTION SHAFT - BM12508**



**FEMALE NUT - BM12517B**



**TIE BAR BASE - BM12538**



**SCREW NUT - DADO125**



**TIE BAR - IR125**



**STIRRUP - BM12537**



**TOP HOLDER - BM12555**



**ROLL SUPPORT - BM12503**



**POSITION INDICATOR - BM125P**



## NON MANDREL ACCESSORIES & SPARE PARTS FOR BM 100

**SCREW THREAD- BM12522**



**HANDWHEEL - BM125C1**



**TIE BAR SCREW - BM12539**



**COUNTERBENDING DIE SCREW - BM125C6**



**FOOT PEDAL - BIAFP01**



**FOOT PEDAL - ROSFP01**



**CONNECTOR - BIA CCB01**



**CONNECTOR - ROS CCR01**



**SIMPLY SYSTEM CONTROL - SMPSC14**



**EXPERT SYSTEM CONTROL - EXPSC14**



**EMERGENCY BUTTON - EM01**



**GREASE SPRAY CAN - GS400M**



**GRIP - IMP01**



**PEDAL - PD01**



**WORK BUTTON - SWC01**



**POSITIONING DEVICE LENGTH 3 M - POS3M100**



**POSITIONING DEVICE LENGTH 6 M - POS6M100**



The images shown above are understood as a preliminary indication.

Mackma Srl reserves the right to change form and function which are used exclusively for innovative improvements.

# BENDING MACHINE BM125

Perfect bends and  
innovation, like  
a straight line.

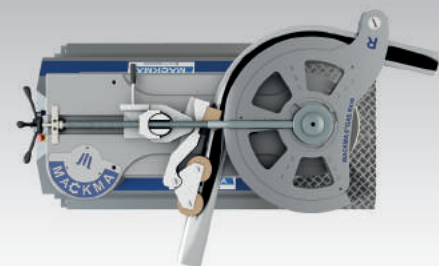
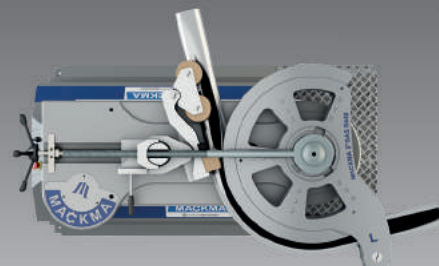
Right and left hand bending  
Variable speed  
Low energy consumption

WARRANTY  
**2 YEARS**  
MACKMA



# MACKMA

*Tube and Pipe Bending  
machine BM125,  
non mandrel, electric,  
semi-automatic*



NEW  
GENERATION  
2015

**MACKMA**  
GRUPPO MASSARO





# BENDING MACHINE BM125 MACKMA

*Tube and Pipe Bending machine  
BM125, non mandrel,  
electric, semi-automatic*

The **BM125 Bending Machine** is **THE ONLY non mandrel pipe bending machine** able to bend tubes and pipes to the left or right, by means of a reversible die holder, designed and patented by us.

The innovative design allows the bending of pipes up to 114,3 mm in diameter and 8,56 mm in wall thickness.

With a maximum of 700 mm centre line radius it is capable of maximum performance for this size of machine, even in the most demanding markets.

The bend rotation speed [max 0,98 RPM] is monitored by a dedicated inverter, to ensure the correct bending speed according to the diameter and thickness of the tube.

The modular design of the bending shaft assembly also allows the use of most competitors tooling, reducing long term tooling costs.

The inverter-controlled motor reduces energy consumption to a minimum.

The machine is mounted on precision casters for effortless movement around busy workshops and sites

**Mackma** uses only 100% high quality Italian components to ensure long-term reliability.

Testament to the high quality of their machines is Mackma's standard 2 year warranty.



The image shown above is understood as a preliminary indication. MACKMA reserves the right to change form and function which are used exclusively for innovative improvements.

## MACKMA

GRUPPO MASSARO

Via Volla snc  
03030 Piedimonte San Germano (FR)  
Tel. +39 0776 404326 - 403489  
Fax +39 0776 403460  
info@mackma.com  
www.mackma.com



### SUITABLE FOR SECTORS, SUCH AS:

*Industrial Tools, Tubular furniture  
Automotive/Motorcycle  
Dairy and Marine  
Sport and fitness, Hydraulics  
Factory maintenance... and many others...*



### MAIN TECHNICAL DATA BM125

Pipe Max Outer Diameter	141,3 (5")	mm
Max Torque	37.000	N/m
Diameter using FE – 42 kg/mq	114,3x8,56	mm
Diameter using FE – 35 kg/mq	141,3x6,55	mm
Diameter using AISI 304/316 – 65 kg/mq	114,3x4,78	mm
Maximum radius	700	mm
Max curvature angle	180°	
Maximum rotation speed	0,98	rpm
Bending direction	rightward and leftward	
Electric tension	380/550	V ac
Max installed power	4	KW
Weight	1200	Kg
Dimensions (WxhxL)	800x1200x1400	mm
Operating temperature	0 - 50° C	

**NON MANDREL ACCESSORIES & SPARE PARTS  
FOR BM 125**

**CONNECTION - BM12507**



**SLIDER - BM12520**



**COUNTERBENDING DIE SUPPORT - BM12530**



**PIN FOR COUNTERBENDING DIE SUPPORT - BM12545**



**COUNTER BENDING DIE SPRING - BM12577**



**LEVER - BM125C2**



**PIVOT - BM12514A**



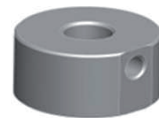
**REDUCTION SHAFT - BM12508**



**FEMALE NUT - BM12517B**



**TIE BAR BASE - BM12538**



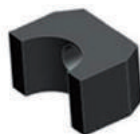
**SCREW NUT - DADO125**



**TIE BAR - IR125**



**STIRRUP - BM12537**



**TOP HOLDER - BM12555**



**ROLL SUPPORT - BM12503**



**POSITION INDICATOR - BM125P**



## NON MANDREL ACCESSORIES & SPARE PARTS FOR BM 125

**SCREW THREAD- BM12522**



**HANDWHEEL - BM125C1**



**TIE BAR SCREW - BM12539**



**COUNTERBENDING DIE SCREW - BM125C6**



**FOOT PEDAL - BIAFP01**



**FOOT PEDAL - ROSFP01**



**CONNECTOR - BIA CCB01**



**CONNECTOR - ROS CCR01**



**SIMPLY SYSTEM CONTROL - SMPSC14**



**EXPERT SYSTEM CONTROL - EXPSC14**



**EMERGENCY BUTTON - EM01**



**GREASE SPRAY CAN - GS400M**



**GRIP - IMP01**



**PEDAL - PD01**



**WORK BUTTON - SWC01**



**POSITIONING DEVICE LENGTH 3 M - POS3M125**



**POSITIONING DEVICE LENGTH 6 M - POS6M125**



The images shown above are understood as a preliminary indication.

Mackma Srl reserves the right to change form and function which are used exclusively for innovative improvements.



# BENDING MACHINE BM150

Perfect bends and  
innovation, like  
a straight line.

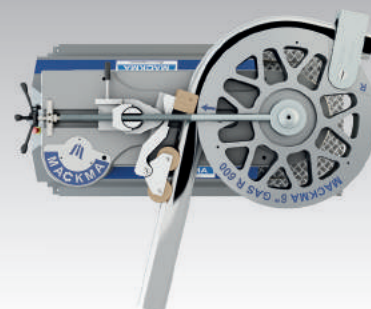
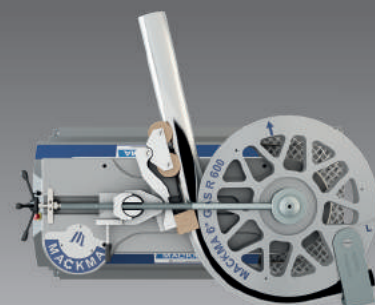
Right and left hand bending  
Variable speed  
Low energy consumption

WARRANTY  
**2 YEARS**  
MACKMA



# MACKMA

*Tube and Pipe Bending  
machine BM150,  
non mandrel, electric,  
semi-automatic*



NEW  
GENERATION  
2015

**MACKMA**  
GRUPPO MASSARO



# BENDING MACHINE BM150 MACKMA

Tube and Pipe Bending machine  
BM150, non mandrel,  
electric, semi-automatic

The **BM150 Bending Machine** is **THE ONLY non mandrel pipe bending machine** able to bend tubes and pipes to the left or right, by means of a reversible die holder, designed and patented by us.

The innovative design allows the bending of pipes up to 141,3 mm in diameter and 9,52 mm in wall thickness.

With a maximum of 850 mm centre line radius it is capable of maximum performance for this size of machine, even in the most demanding markets.

The bend rotation speed [max 1 RPM] is monitored by a dedicated inverter, to ensure the correct bending speed according to the diameter and thickness of the tube.

The modular design of the bending shaft assembly also allows the use of most competitors tooling, reducing long term tooling costs.

The inverter-controlled motor reduces energy consumption to a minimum.

The machine is mounted on precision casters for effortless movement around busy workshops and sites

**Mackma** uses only 100% high quality Italian components to ensure long-term reliability.

Testament to the high quality of their machines is Mackma's standard 2 year warranty.



The image shown above is understood as a preliminary indication. MACKMA reserves the right to change form and function which are used exclusively for innovative improvements.

## MACKMA

GRUPPO MASSARO

Via Volla snc  
03030 Piedimonte San Germano (FR)  
Tel. +39 0776 404326 - 403489  
Fax +39 0776 403460  
info@mackma.com  
www.mackma.com



### SUITABLE FOR SECTORS, SUCH AS:

Industrial Tools, Tubular furniture  
Automotive/Motorcycle  
Dairy and Marine  
Sport and fitness, Hydraulics  
Factory maintenance... and many others...

### MAIN TECHNICAL DATA BM150

Pipe Max Outer Diameter	168,3 (6")	mm
Max Torque	70.000	N/m
Diameter using FE – 42 kg/mq	141,3x9,52	mm
Diameter using FE – 35 kg/mq	168,3x7,11	mm
Diameter using AISI 304/316 – 65 kg/mq	141,3x6,55	mm
Maximum radius	850	mm
Max curvature angle	180°	
Maximum rotation speed	1	rpm
Bending direction	rightward and leftward	
Electric tension	380/550	V ac
Max installed power	7,5	KW
Weight	1500	Kg
Dimensions (WxhxL)	1000x1200x1600	mm
Operating temperature	0 - 50° C	



## NON MANDREL ACCESSORIES & SPARE PARTS FOR BM 150

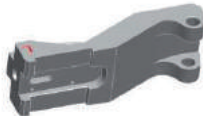
**CONNECTION - BM20007**



**SLIDER - BM20020**



**COUNTERBENDING DIE SUPPORT - BM20030**



**PIN FOR COUNTERBENDING DIE SUPPORT - BM20045**



**COUNTER BENDING DIE SPRING - BM20077**



**LEVER - BM200C2**



**PIVOT - BM20014A**



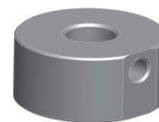
**REDUCTION SHAFT - BM20008**



**FEMALE NUT - BM20017B**



**TIE BAR BASE - BM20038**



**SCREW NUT - DADO200**



**TIE BAR - IR200**



**STIRRUP - BM20037**



**TOP HOLDER - BM20055**



**ROLL SUPPORT - BM2003**



**POSITION INDICATOR - BM200P**



## NON MANDREL ACCESSORIES & SPARE PARTS FOR BM 150

**SCREW THREAD- BM20022**



**HANDWHEEL - BM200C1**



**TIE BAR SCREW - BM20039**



**COUNTERBENDING DIE SCREW - BM200C6**



**FOOT PEDAL - BIAFP01**



**FOOT PEDAL - ROSFP01**



**CONNECTOR - BIA CCB01**



**CONNECTOR - ROS CCR01**



**SIMPLY SYSTEM CONTROL - SMPSC14**



**EXPERT SYSTEM CONTROL - EXPSC14**



**EMERGENCY BUTTON - EM01**



**GREASE SPRAY CAN - GS400M**



**GRIP - IMP01**



**PEDAL - PD01**



**WORK BUTTON - SWC01**



**POSITIONING DEVICE LENGTH 3 M - POS3M150**



**POSITIONING DEVICE LENGTH 6 M - POS6M150**



The images shown above are understood as a preliminary indication.

Mackma Srl reserves the right to change form and function which are used exclusively for innovative improvements.



# BENDING MACHINE BM200 MACKMA

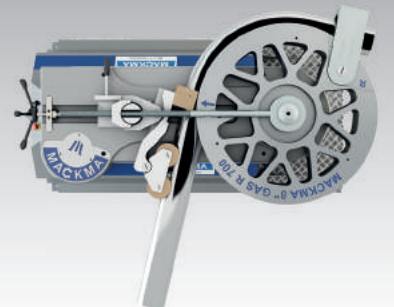
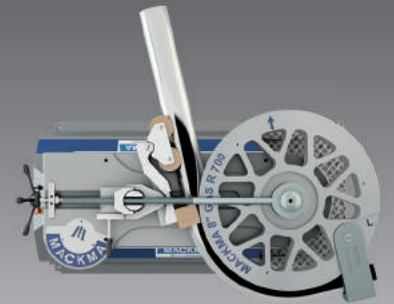
Perfect bends and innovation, like a straight line.

Right and left hand bending  
Variable speed  
Low energy consumption

WARRANTY  
**2 YEARS**  
MACKMA



*Tube and Pipe Bending machine BM200, non mandrel, electric, semi-automatic*



NEW  
GENERATION  
2015

**MACKMA**  
GRUPPO MASSARO



# BENDING MACHINE BM200 MACKMA

*Tube and Pipe Bending machine  
BM200, non mandrel,  
electric, semi-automatic*

The **BM200 Bending Machine** is **THE ONLY non mandrel pipe bending machine** able to bend tubes and pipes to the left or right, by means of a reversible die holder, designed and patented by us.

The innovative design allows the bending of pipes up to 168,3 mm in diameter and 10,97 mm in wall thickness. With a maximum of 1100 mm centre line radius it is capable of maximum performance for this size of machine, even in the most demanding markets.

The bend rotation speed [max 0,8 RPM] is monitored by a dedicated inverter, to ensure the correct bending speed according to the diameter and thickness of the tube.

The modular design of the bending shaft assembly also allows the use of most competitors tooling, reducing long term tooling costs.

The inverter-controlled motor reduces energy consumption to a minimum.

The machine is mounted on precision casters for effortless movement around busy workshops and sites

**Mackma** uses only 100% high quality Italian components to ensure long-term reliability.

Testament to the high quality of their machines is Mackma's standard 2 year warranty.



The image shown above is understood as a preliminary indication. MACKMA reserves the right to change form and function which are used exclusively for innovative improvements.

## MACKMA

GRUPPO MASSARO

Via Volla snc  
03030 Piedimonte San Germano (FR)  
Tel. +39 0776 404326 - 403489  
Fax +39 0776 403460  
info@mackma.com  
www.mackma.com



### SUITABLE FOR SECTORS, SUCH AS:

*Industrial Tools, Tubular furniture  
Automotive/Motorcycle  
Dairy and Marine  
Sport and fitness, Hydraulics  
Factory maintenance... and many others...*



### MAIN TECHNICAL DATA BM200

Pipe Max Outer Diameter	219,3 (8")	mm
Max Torque	115.000	N/m
Diameter using FE – 42 kg/mq	168,3x10,97	mm
Diameter using FE – 35 kg/mq	219,1x6,35 (8")	mm
Diameter using AISI 304/316 – 65 kg/mq	168,3x7,11	mm
Maximum radius	1100	mm
Max curvature angle	180°	
Maximum rotation speed	0,8	rpm
Bending direction	rightward and leftward	
Electric tension	380/550	V ac
Max installed power	11	KW
Weight	2200	Kg
Dimensions (WxhxL)	1200x1350x1850	mm
Operating temperature	0 - 50° C	



## NON MANDREL ACCESSORIES & SPARE PARTS FOR BM 200

**CONNECTION - BM20007**



**SLIDER - BM20020**



**COUNTERBENDING DIE SUPPORT - BM20030**



**PIN FOR COUNTERBENDING DIE SUPPORT - BM20045**



**COUNTER BENDING DIE SPRING - BM20077**



**LEVER - BM200C2**



**PIVOT - BM20014A**



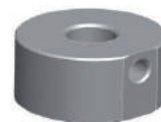
**REDUCTION SHAFT - BM20008**



**FEMALE NUT - BM20017B**



**TIE BAR BASE - BM20038**



**SCREW NUT - DADO200**



**TIE BAR - IR200**



**STIRRUP - BM20037**



**TOP HOLDER - BM20055**



**ROLL SUPPORT - BM2003**



**POSITION INDICATOR - BM200P**





## NON MANDREL ACCESSORIES & SPARE PARTS FOR BM 200

**SCREW THREAD- BM20022**



**HANDWHEEL - BM200C1**



**TIE BAR SCREW - BM20039**



**COUNTERBENDING DIE SCREW - BM200C6**



**FOOT PEDAL - BIAFP01**



**FOOT PEDAL - ROSFP01**



**CONNECTOR - BIA CCB01**



**CONNECTOR - ROS CCR01**



**SIMPLY SYSTEM CONTROL - SMPSC14**



**EXPERT SYSTEM CONTROL - EXPSC14**



**EMERGENCY BUTTON - EM01**



**GREASE SPRAY CAN - GS400M**



**GRIP - IMP01**



**PEDAL - PD01**



**WORK BUTTON - SWC01**



**POSITIONING DEVICE LENGTH 3 M - POS3M200**



**POSITIONING DEVICE LENGTH 6 M - POS6M200**



The images shown above are understood as a preliminary indication.

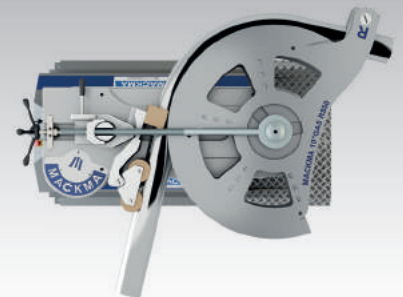
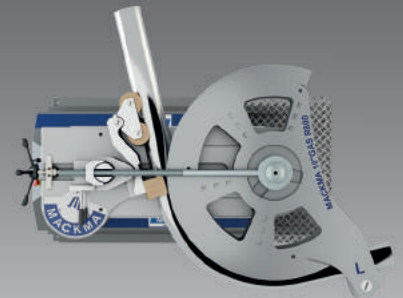
Mackma Srl reserves the right to change form and function which are used exclusively for innovative improvements.

# BENDING MACHINE BM250 MACKMA

Perfect bends and innovation, like a straight line.

Right and left hand bending  
Variable speed  
Low energy consumption

WARRANTY  
**2 YEARS**  
MACKMA



NEW  
GENERATION  
2015

**MACKMA**  
GRUPPO MASSARO





# BENDING MACHINE BM250 MACKMA

*Tube and Pipe Bending machine  
BM250, non mandrel,  
electric, semi-automatic*

The **BM250 Bending Machine** is **THE ONLY non mandrel pipe bending machine** able to bend tubes and pipes to the left or right, by means of a reversible die holder, designed and patented by us.

The innovative design allows the bending of pipes up to 219,1 mm in diameter and 12,7 mm in wall thickness.

With a maximum of 1400 mm centre line radius it is capable of maximum performance for this size of machine, even in the most demanding markets.

The bend rotation speed [max 0,6 RPM] is monitored by a dedicated inverter, to ensure the correct bending speed according to the diameter and thickness of the tube.

The modular design of the bending shaft assembly also allows the use of most competitors tooling, reducing long term tooling costs.

The inverter-controlled motor reduces energy consumption to a minimum.

The machine is mounted on precision casters for effortless movement around busy workshops and sites

**Mackma** uses only 100% high quality Italian components to ensure long-term reliability.

Testament to the high quality of their machines is Mackma's standard 2 year warranty.



The image shown above is understood as a preliminary indication. MACKMA reserves the right to change form and function which are used exclusively for innovative improvements.

## MACKMA

GRUPPO MASSARO

Via Volla snc  
03030 Piedimonte San Germano (FR)  
Tel. +39 0776 404326 - 403489  
Fax +39 0776 403460  
info@mackma.com  
www.mackma.com



### SUITABLE FOR SECTORS, SUCH AS:

*Industrial Tools, Tubular furniture  
Automotive/Motorcycle  
Dairy and Marine  
Sport and fitness, Hydraulics  
Factory maintenance... and many others...*



### MAIN TECHNICAL DATA BM250

Pipe Max Outer Diameter	273 (10")	mm
Max Torque	230.000	N/m
Diameter using FE – 42 kg/mq	219,1x12,7	mm
Diameter using FE – 35 kg/mq	273x7,8 (10")	mm
Diameter using AISI 304/316 – 65 kg/mq	219,1x8,18	mm
Maximum radius	1400	mm
Max curvature angle	180°	
Maximum rotation speed	0,6	rpm
Bending direction	rightward and leftward	
Electric tension	380/550	V ac
Max installed power	22	KW
Weight	3800	Kg
Dimensions (WxhxL)	1400x1500x2150	mm
Operating temperature	0 - 50° C	

## NON MANDREL ACCESSORIES & SPARE PARTS FOR BM 250

**CONNECTION - BM30007**



**SLIDER - BM30020**



**COUNTERBENDING DIE SUPPORT - BM30030**



**PIN FOR COUNTERBENDING DIE SUPPORT - BM30045**



**COUNTER BENDING DIE SPRING - BM30077**



**LEVER - BM300C2**



**PIVOT - BM30014A**



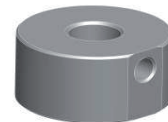
**REDUCTION SHAFT - BM30008**



**FEMALE NUT - BM30017B**



**TIE BAR BASE - BM30038**



**SCREW NUT - DADO300**



**TIE BAR - IR300**



**STIRRUP - BM30037**



**TOP HOLDER - BM30055**



**ROLL SUPPORT - BM3003**



**POSITION INDICATOR - BM300P**





## NON MANDREL ACCESSORIES & SPARE PARTS FOR BM 250

**SCREW THREAD- BM30022**



**HANDWHEEL - BM300C1**



**TIE BAR SCREW - BM30039**



**COUNTERBENDING DIE SCREW - BM300C6**



**FOOT PEDAL - BIAFP01**



**FOOT PEDAL - ROSFP01**



**CONNECTOR - BIA CCB01**



**CONNECTOR - ROS CCR01**



**SIMPLY SYSTEM CONTROL - SMPSC14**



**EXPERT SYSTEM CONTROL - EXPSC14**



**EMERGENCY BUTTON - EM01**



**GREASE SPRAY CAN - GS400M**



**GRIP - IMP01**



**PEDAL - PD01**



**WORK BUTTON - SWC01**



**POSITIONING DEVICE LENGTH 3 M - POS3M250**



**POSITIONING DEVICE LENGTH 6 M - POS6M250**



The images shown above are understood as a preliminary indication.

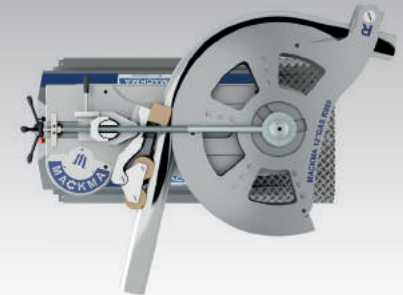
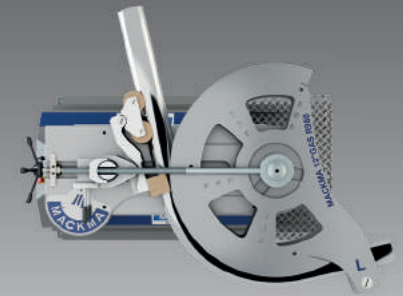
Mackma Srl reserves the right to change form and function which are used exclusively for innovative improvements.

# BENDING MACHINE BM300 MACKMA

Perfect bends and innovation, like a straight line.

Right and left hand bending  
Variable speed  
Low energy consumption

WARRANTY  
**2 YEARS**  
MACKMA



NEW  
GENERATION  
2015

**MACKMA**  
GRUPPO MASSARO





# BENDING MACHINE BM300 MACKMA

*Tube and Pipe Bending machine  
BM300, non mandrel,  
electric, semi-automatic*

The **BM300 Bending Machine** is **THE ONLY non mandrel pipe bending machine** able to bend tubes and pipes to the left or right, by means of a reversible die holder, designed and patented by us.

The innovative design allows the bending of pipes up to 273 mm in diameter and 18,26 mm in wall thickness.

With a maximum of 1700 mm centre line radius it is capable of maximum performance for this size of machine, even in the most demanding markets.

The bend rotation speed [max 0,4 RPM] is monitored by a dedicated inverter, to ensure the correct bending speed according to the diameter and thickness of the tube.

The modular design of the bending shaft assembly also allows the use of most competitors tooling, reducing long term tooling costs.

The inverter-controlled motor reduces energy consumption to a minimum.

The machine is mounted on precision casters for effortless movement around busy workshops and sites

**Mackma** uses only 100% high quality Italian components to ensure long-term reliability.

Testament to the high quality of their machines is Mackma's standard 2 year warranty.



The image shown above is understood as a preliminary indication. MACKMA reserves the right to change form and function which are used exclusively for innovative improvements.

## MACKMA

GRUPPO MASSARO

Via Volla snc  
03030 Piedimonte San Germano (FR)  
Tel. +39 0776 404326 - 403489  
Fax +39 0776 403460  
info@mackma.com  
www.mackma.com



### SUITABLE FOR SECTORS, SUCH AS:

*Industrial Tools, Tubular furniture  
Automotive/Motorcycle  
Dairy and Marine  
Sport and fitness, Hydraulics  
Factory maintenance... and many others...*



### MAIN TECHNICAL DATA BM300

Pipe Max Outer Diameter	323,9 (12")	mm
Max Torque	500.000	N/m
Diameter using FE – 42 kg/mq	273x18,26	mm
Diameter using FE – 35 kg/mq	323,9x17,47	mm
Diameter using AISI 304/316 – 65 kg/mq	273x12,7	mm
Maximum radius	1700	mm
Max curvature angle	180°	
Maximum rotation speed	0,4	rpm
Bending direction	rightward and leftward	
Electric tension	380/550	V ac
Max installed power	50	KW
Weight	6500	Kg
Dimensions (WxhxL)	1700x1800x3500	mm
Operating temperature	0 - 50° C	

## NON MANDREL ACCESSORIES & SPARE PARTS FOR BM 300

**CONNECTION - BM30007**



**SLIDER - BM30020**



**COUNTERBENDING DIE SUPPORT - BM30030**



**PIN FOR COUNTERBENDING DIE SUPPORT - BM30045**



**COUNTER BENDING DIE SPRING - BM30077**



**LEVER - BM300C2**



**PIVOT - BM30014A**



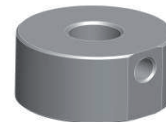
**REDUCTION SHAFT - BM30008**



**FEMALE NUT - BM30017B**



**TIE BAR BASE - BM30038**



**SCREW NUT - DADO300**



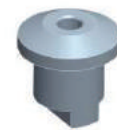
**TIE BAR - IR300**



**STIRRUP - BM30037**



**TOP HOLDER - BM30055**



**ROLL SUPPORT - BM3003**



**POSITION INDICATOR - BM300P**





## NON MANDREL ACCESSORIES & SPARE PARTS FOR BM 300

**SCREW THREAD- BM30022**



**HANDWHEEL - BM300C1**



**TIE BAR SCREW - BM30039**



**COUNTERBENDING DIE SCREW - BM300C6**



**FOOT PEDAL - BIAFP01**



**FOOT PEDAL - ROSFP01**



**CONNECTOR - BIA CCB01**



**CONNECTOR - ROS CCR01**



**SIMPLY SYSTEM CONTROL - SMPSC14**



**EXPERT SYSTEM CONTROL - EXPSC14**



**EMERGENCY BUTTON - EM01**



**GREASE SPRAY CAN - GS400M**



**GRIP - IMP01**



**PEDAL - PD01**



**WORK BUTTON - SWC01**



**POSITIONING DEVICE LENGTH 3 M - POS3M300**



**POSITIONING DEVICE LENGTH 6 M - POS6M300**



The images shown above are understood as a preliminary indication.

Mackma Srl reserves the right to change form and function which are used exclusively for innovative improvements.

# NC - S CONTROL SIMPLY



## FUNCTIONAL SPECIFICATIONS

NC-S means Computerized Numerical Control Simple. Thanks to its small size, modern technology and cost, it was possible to obtain a reliable, powerful and economical product . The non mandrel bending machine MACKMA is equipped with this control and allows to realize any geometric curve both to Right and Left bends (Mackma Patent).

Thanks to NC-S Control the machine perform in semiautomatic way any program, simply by setting radius and degrees and tenth of degree, of each bend of project to be realized.

The internal memory can realize up to 9 (Nine) bends programmable to both direction Right and Left. The NC-S has also a variable speed of +/- 20% for the rotation of bend axis.

This control is designed and programmed thanks to specifications of MACKMAS Technical, to meet the needs of all workers who use repetitive the same bend radius.

The SIMPLY as it name implies, is the easiest control to use, even for novices.

## TECHNICAL FEATURES

The NC-S is made of 32-bit microprocessor. All input and output signals are isolated and protected by disturbances from cable or wireless.

The keyboard is a multi-function keys, with INTUITIVE symbology, and does not need Multilingual translation. All buttons are mechanical and protected by a single polycarbonate membrane, suitable to work in any industria environment .

The display of setted and visible running values is possible through a liquid crystal display (LCD) backlight, which allows a good reading from any angle and with any type of light.

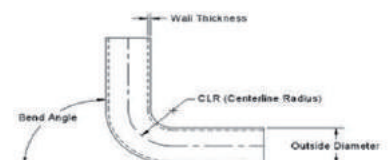
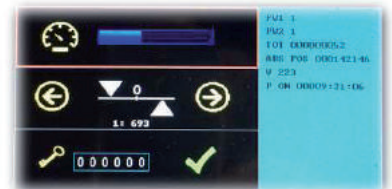
The NC-S (Simply) has 9 (nine) program lines, the operator can choose which program line to use, as from standards there are already preset values, starting from the 15° and from 15° to 15° until you get to the line # 9 with 135 ° setted, but each program line can be changed as operator required.

## NC- S

*Numerical control  
For Mackma  
Bending Machine*

*Presetting  
of bending radius*

*Internal Memory  
for programs  
saving*



# NC - E CONTROL EXPERT



## FUNCTIONAL SPECIFICATIONS

NC-E means Computerized Numerical Control EXPERT.

Thanks to its small size, modern technology and cost, it was possible to obtain a reliable, powerful and economical product . The non mandrel bending machine MACKMA is equipped with this control and allows to realize any geometric curve both to Right and Left bends (Mackma patent)

Thanks to NC-E Control the machine perform in semiautomatic way any program, simply by setting radius and degrees and tenth of degree, of each bend of project to be realized.

The internal memory can realize up to 9 (nine) bends programmable to both direction Right and Left per 99 pages.

The NC-E Control has also a variable speed of +/- 20% for the rotation of bend axis.

This control is designed and programmed thanks to specifications of MACKMAS Technical, to meet the needs of all workers who use repetitive the same bending radius.

The EXPERT as it name implies, is the most completly control, even for the specialist of those sector.

## TECHNICAL FEATURES

The NC-E is made of 32-bit microprocessor.

All input and output signals are isolated and protected by disturbances from cable or wireless. The keyboard is a multi-function keys, with INTUITIVE symbology, and does not need Multilingual translation. All buttons are mechanical and protected by a single polycarbonate membrane, suitable to work in any industria environment . The display of setted and running values and is possible through a liquid crystal display (LCD) backlight, which allows a good reading from any angle and with any type of light.

The NC-S (Simply) has 9 (nine) program lines, the operator can choose which line to use the program, as standards are already preset values, starting from the 15th degrees and continue from 15° to 15° until you get to the line # 9 with 135 ° setted, but each program line can be changed as operator required. There are 99 pages at all and 891 bends inside memory. You can also set the bending direction - Right or Left according to the needs of the piece to be realized.

Each control can be connected to the foot pedal (optional) those electric circuit is already wired and can be accept without further technical interventions. (Plug and Play)

Any MACKMA bending machine is subjected to be tested before shipment. This operation is considered very important to give the Customer the highest satisfaction and a reliable product of high quality.

Our technicians are at your disposal to advise the most suitable model. Various accessories are available to make the machine more suitable to your needs and the types of profile you need to work. Do not forget to communicate always, the bending size of tube, the type of material and the bending radius. All bending machines of "MACKMA" conform to the provisions of "Equipment".

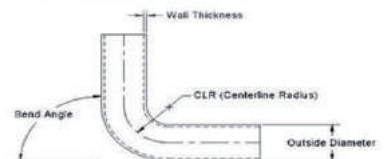
## NC- E

Numerical control  
For Mackma  
Bending Machine

Presetting  
of bending radius

Internal Memory  
for programs  
saving

Internal Memory  
for programs  
saving of **891 programms**





# RING ROLLER WITH TWO MOTORIZED ROLLERS

## RB30m



# MACKMA

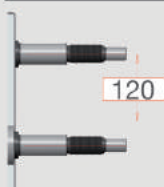
### MANUAL RING ROLLER

Central Roll Force	3 Ton.
Distance Between Shafts	200 mm
Shaft Diameter	30 mm
Useful Shaft Length	90 mm
Roll Diameter	180 mm
Centre Roller Stroke	120 mm
Shaft Speed	9 rpm
Motor in Kw	2x0,55
Operating Voltage	380/400
Operating Position	Vert./Horiz.
Posit.Centre Roll	Manual with Spindle
Antitwist Side-Rollers	Manual
Display	Digital
Number of Programs	1
Activation	With Selector
Noise Level	< 70 db
Dimensions	800x1200x1600h
Weight	90 Kg

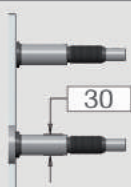
NEW  
GENERATION  
2015

**MACKMA**

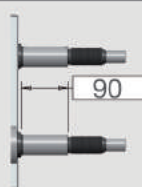
GRUPPO MASSARO



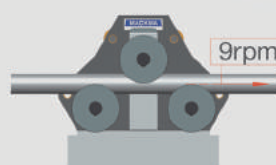
STROKE



Ø SHAFT



USEFUL



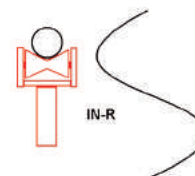
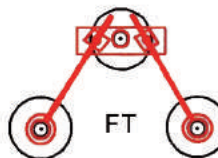
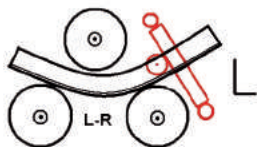
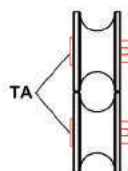
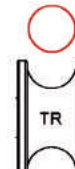
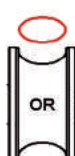
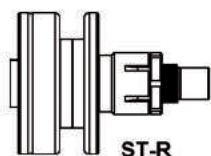
SPEED



CENTRE DISTANCE

# RING ROLLER WITH TWO MOTORIZED ROLLERS **RB30m**

## ACCESSORIES



## MAXIMUM BENDING CAPACITY

S= STANDARD O= OPTIONAL

POSITION	MM	R.MM	S-O	POSITION	MM	R.MM	S-O
	35x8	250	ST-R		50x12	200	ST-R
	15	200	ST-R				SP-R
	35x35x4	400	ST-R/FT		35x35x5	200	ST-R/L-R
	35x35x5	200	ST-R		30x35x4	250	ST-R
	UPN 50	200	ST-R		UPN 50	300	ST-R
	UPN 30	1000	4 <sup>th</sup> roll ST-R/FT				
	30x10x2	200	OR		30x15x2	200	OR
	35x2	180	TR		22	200	ST-R
	40x20x2,5	700	SQR		30x20x2,5	600	SQR

**MACKMA**

GRUPPO MASSARO

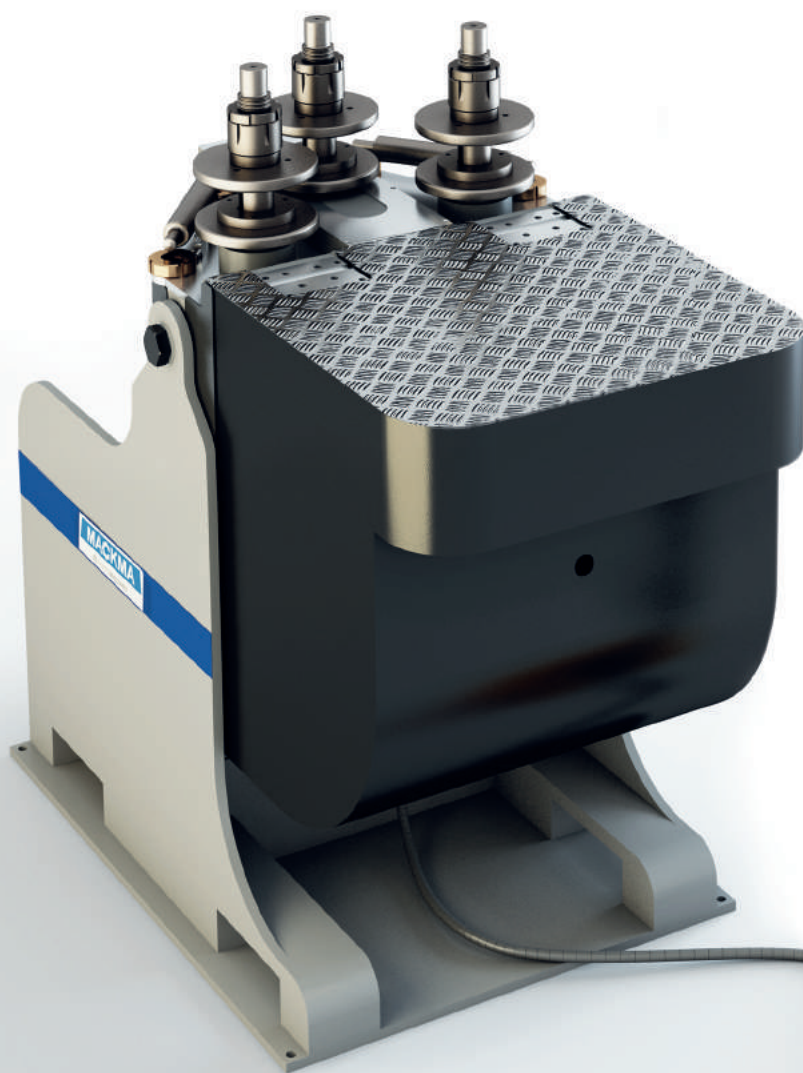
NEW  
GENERATION  
2015

Via Volta snc  
03030 Piedimonte San Germano (FR)  
Tel. +39 0776 404326 - 403489  
Fax +39 0776 403460  
info@mackma.com  
www.mackma.com





# RING ROLLER WITH TWO MOTORIZED ROLLERS **RB40i**



# MACKMA

## RING ROLLER ELECTRO-HYDRAULIC

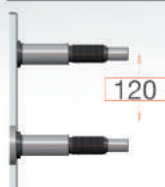
Central Roll Force	6 Ton.
Distance Between Shafts	300 mm
Shaft Diameter	40 mm
Useful Shaft Length	120 mm
Roll Diameter	180 mm
Centre Roller Stroke	120 mm
Shaft Speed	9 rpm
Motor in Kw	3x0,55
Operating Voltage	380/400
Operating Position	Vert./Horiz.
Antitwist Side-Rollers	Manual
Display	Digital
Number of Programs	1
Activation	With footpedal
Noise Level	< 70 db
Dimensions	800x1200x1600h
Weight	290 Kg



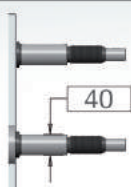
NEW  
GENERATION  
2015

**MACKMA**

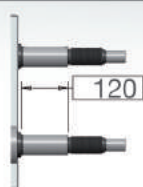
GRUPPO MASSARO



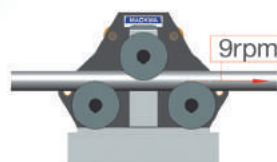
STROKE



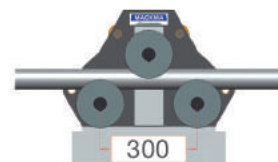
Ø SHAFT



USEFUL



SPEED

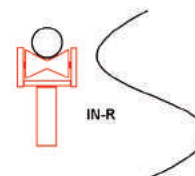
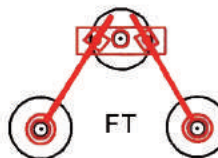
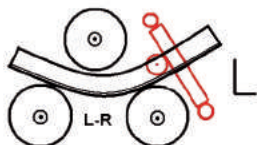
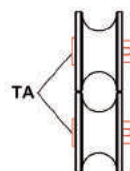
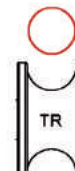
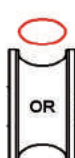
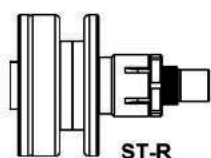


CENTRE DISTANCE



# RING ROLLER WITH TWO MOTORIZED ROLLERS **RB40i**

## ACCESSORIES



## MAXIMUM BENDING CAPACITY

S= STANDARD O= OPTIONAL

POSITION	MM	R.MM	S-O	POSITION	MM	R.MM	S-O
	50x8 50x10	250 300	ST-R ST-R/FT		60x15 60x20	130 300	ST-R ST-R/FT
	25 28	250 600	ST-R ST-R/FT				SP-R
	50x50x5 60x60x6	300 500	ST-R/FT ST-R/FT		40x40x4 45x45x5	300 600	ST-R/L-R ST-R/L-R
	60x30x5,5 50x50x5	250 500	ST-R ST-R/FT		60x30x5,5 45x45x6	300 600	ST-R ST-R/FT
	50x25x5 60x30x6	250 400	ST-R ST-R/FT		50x25x5 60x30x6	250 500	ST-R ST-R/FT
	UPN 40	1000	4 <sup>th</sup> roll ST-R/FT				
	30x10x2 50x25x3	200 600	OR OR/FT		30x15x2 60x30x3	200 600	OR OR/FT
	50x1,8 60x2	250 800	TR TR/FT		28 30	150 300	ST-R ST-R/FT
	40x40x2 45x45x2,5	600 1000	SQR SQR/FT		40x20x2,5 50x25x2,5	600 700	SQR SQR/FT

**MACKMA**

GRUPPO MASSARO

NEW  
GENERATION  
2015

Via Volta snc  
03030 Piedimonte San Germano (FR)  
Tel. +39 0776 404326 - 403489  
Fax +39 0776 403460  
info@mackma.com  
www.mackma.com



# RING ROLLER WITH THREE MOTORIZED ROLLERS

## RB60e

# MACKMA

### RING ROLLER ELECTRICAL WITHOUT HYDRAULIC

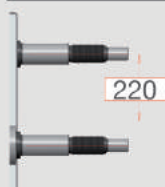
Central Roll Force	10 Ton.
Distance Between Shafts	360 mm
Shaft Diameter	50 mm
Useful Shaft Length	150 mm
Roll Diameter	180 mm
Centre Roller Stroke	220 mm
Shaft Speed	9 rpm
Motor in Kw	3x0,55
Voltage	380/400
Operating Position	Vert./Horiz.
Pos.Centre Roll	Mechanical with prec.
Antitwist Side-Rollers	Manual
Display	Digital programmable
Number of Programs	99
Activation	With footpedal
Noise Level	< 70 db
Dimensions	800x1200x1600h
Weight	395 Kg



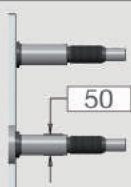
NEW  
GENERATION  
2015

**MACKMA**

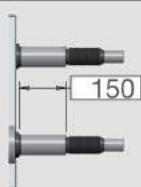
GRUPPO MASSARO



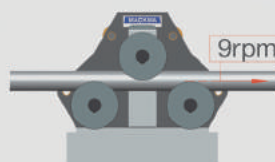
STROKE



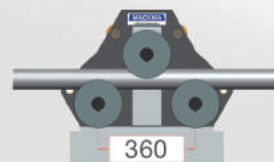
Ø SHAFT



USEFUL



SPEED

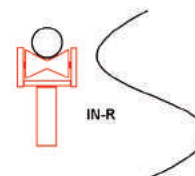
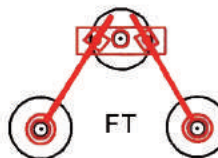
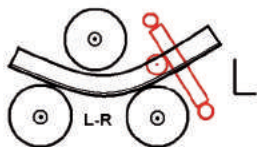
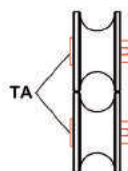
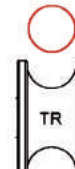
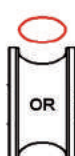
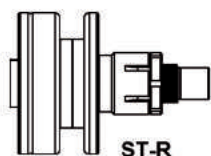


CENTRE DISTANCE



# RING ROLLER WITH THREE MOTORIZED ROLLERS **RB60e**

## ACCESSORIES



## MAXIMUM BENDING CAPACITY

S= STANDARD O= OPTIONAL

POSITION	MM	R.MM	S-O	POSITION	MM	R.MM	S-O
	80x16 80x20	200 600	ST-R ST-R/FT		50x12 50x15	200 500	ST-R ST-R/FT
	30 35	300 700	ST-R ST-R/FT				SP-R
	50x50x5 60x60x6	250 500	ST-R/FT ST-R/FT		40x40x5 50x50x6	300 500	ST-R/L-R ST-R/L-R
	60x60x7 80x40x7,5	300 500	ST-R ST-R/FT		50x50x6 70x35x6	300 500	ST-R ST-R/FT
	60x60x6 80x45x6	200 600	ST-R ST-R/FT		50x25x5 80x45x6	250 600	ST-R ST-R/FT
	UPN 80	2000	4 <sup>th</sup> roll ST-R/FT				
	30x15x2 60x30x3	200 600	OR OR/FT		30x15x2 60x30x3	200 600	OR OR/FT
	60x5 80x2	500 800	TR TR/FT		40 70	200 300	ST-R ST-R/FT
	60x40x3 100x40x4	500 1300	SQR SQR/FT		30x15x2 60x40x3	150 600	SQR SQR/FT

**MACOMA**

GRUPPO MASSARO

NEW  
GENERATION  
2015

Via Volta snc  
03030 Piedimonte San Germano (FR)  
Tel. +39 0776 404326 - 403489  
Fax +39 0776 403460  
info@mackma.com  
www.mackma.com





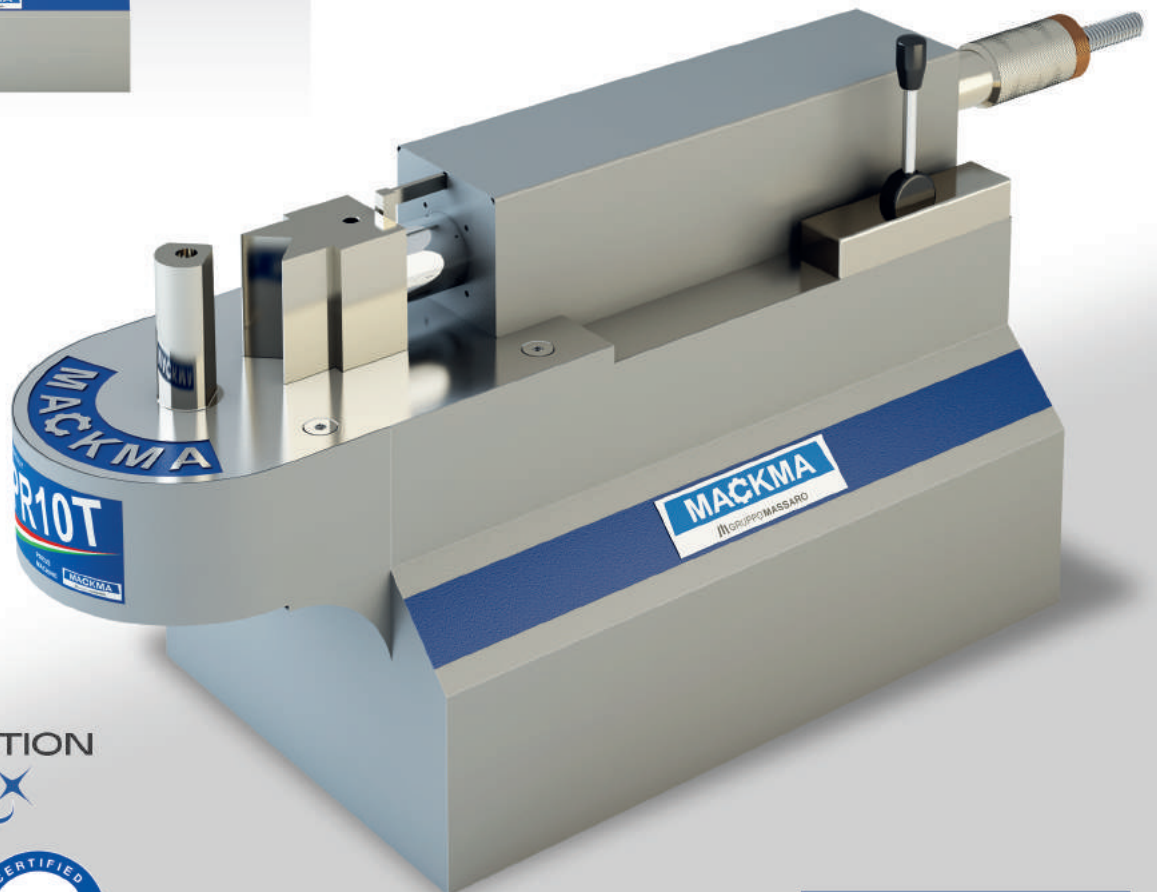
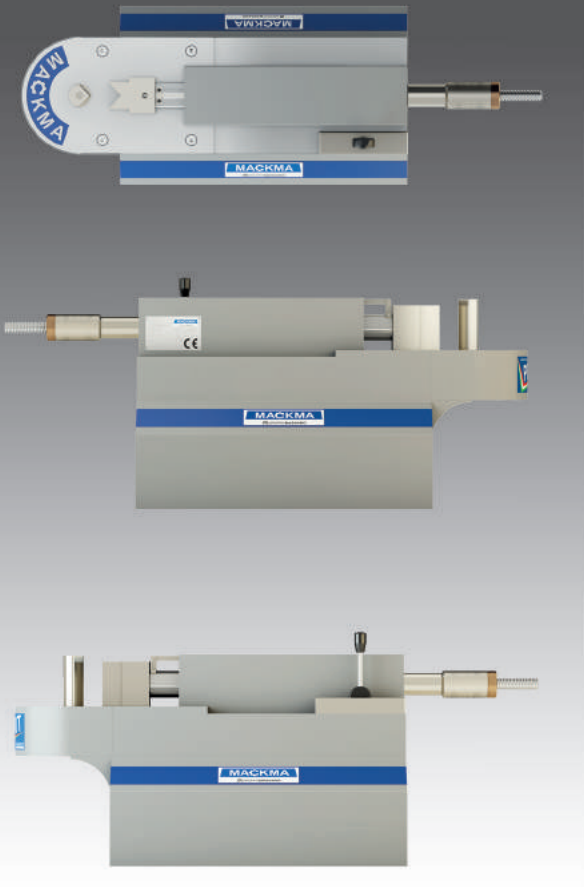
# MACKMA HORIZONTAL PRESS PR10T

A compact 10 Ton, Bench Top Horizontal Press, powered by an efficient, high quality hydraulic pack.

A precision, chromed piston ensures accuracy, with a simple mechanical adjustment of the end stop.

Simple manual control with return spring to the start position.

With a single phase electrical supply, the machine is also a very handy machine for use on site.

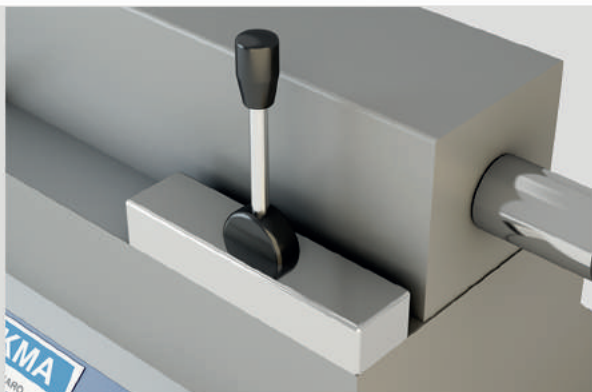


NEW  
GENERATION  
2015

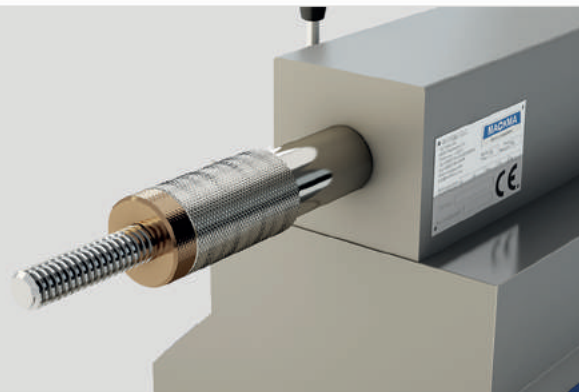


**MACKMA**  
GRUPPO MASSARO

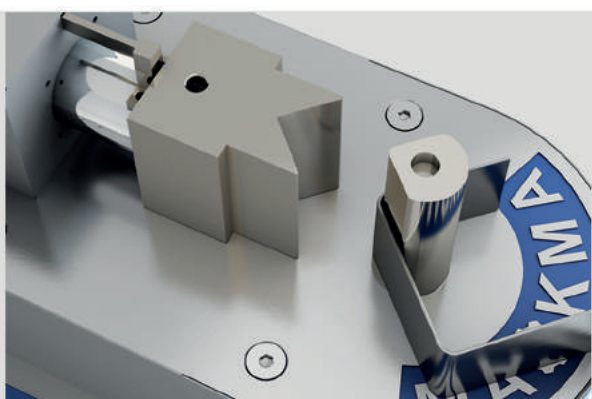
# TECHNICAL FEATURES



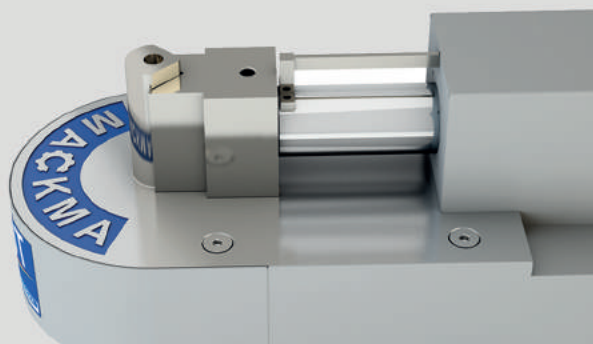
Manual lever control



Simple mechanical locking screw for bend stop position



Typical example of a square shaped component



Processing examples

The image shown above is understood as a preliminary indication. MACKMA reserves the right to change form and function which are used exclusively for innovative improvements.

NEW  
GENERATION  
2015

**MACKMA**

GRUPPO MASSARO

Via Volla snc  
03030 Piedimonte San Germano (FR)  
Tel. +39 0776 404326 - 403489  
Fax +39 0776 403460  
info@mackma.com  
www.mackma.com



## SPECIFICATION

Machine dimensions (cm)	100x24,5x29
Weight (Kgs)	85
Bending force in Tons	10
Tool height in mm.	100
Capacity (Mild Steel Plate)	100x10 (with V width: 110mm)
Electrical supply	220V, 1ph, 50Hz
Motor power (Kw)	0,75



# MACKMA HORIZONTAL PRESS PR20T

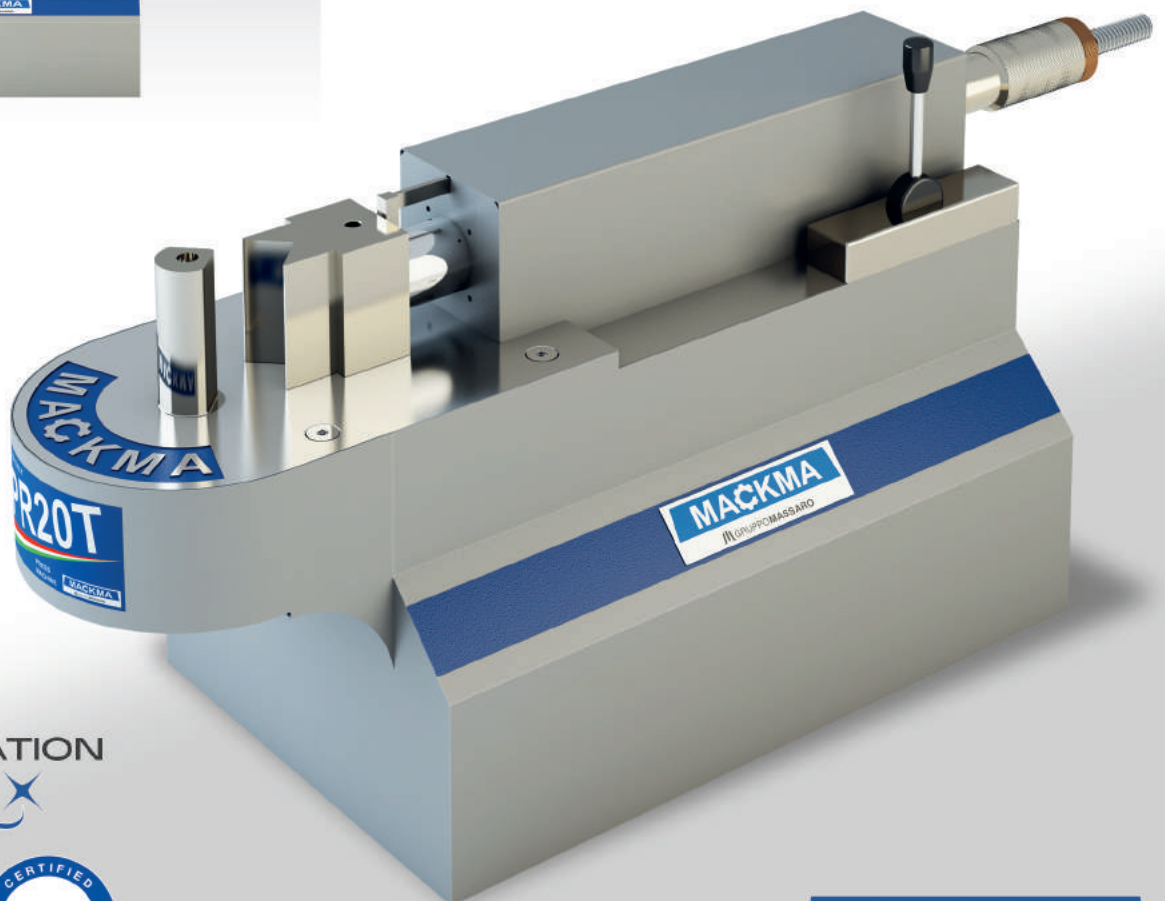


A compact 20 Ton, Bench Top Horizontal Press, powered by an efficient, high quality hydraulic pack.

A precision, chromed piston ensures accuracy, with a simple mechanical adjustment of the end stop.

Simple manual control with return spring to the start position.

With a single phase electrical supply, the machine is also a very handy machine for use on site.



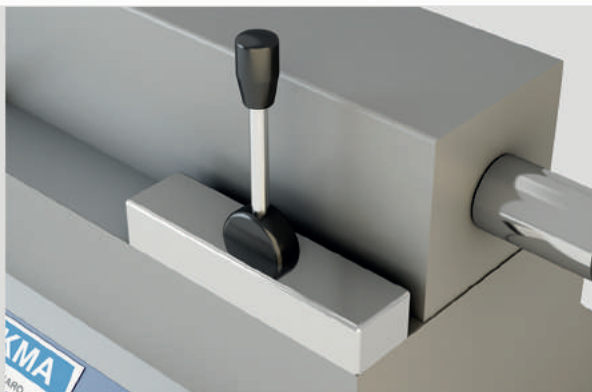
NEW  
GENERATION  
2015



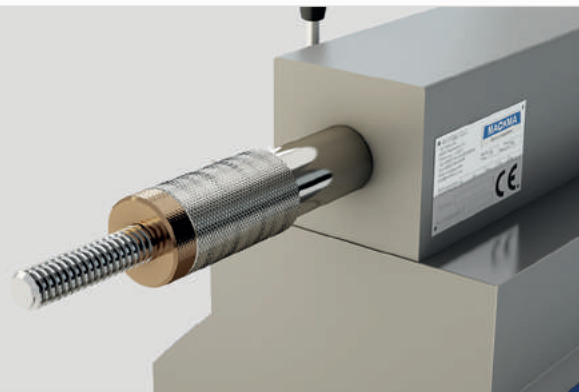
**MACKMA**  
GRUPPO MASSARO



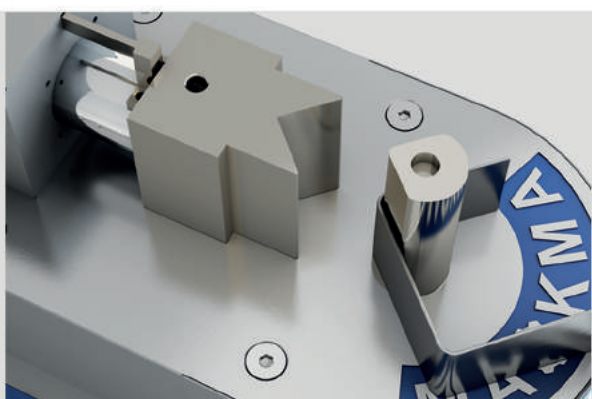
# TECHNICAL FEATURES



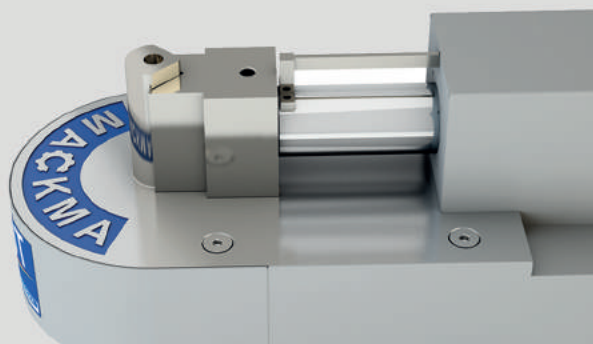
Manual lever control



Simple mechanical locking screw for bend stop position



Typical example of a square shaped component



Processing examples

The image shown above is understood as a preliminary indication. MACKMA reserves the right to change form and function which are used exclusively for innovative improvements.

NEW  
GENERATION  
2015

**MACKMA**

GRUPPO MASSARO

Via Volla snc  
03030 Piedimonte San Germano (FR)  
Tel. +39 0776 404326 - 403489  
Fax +39 0776 403460  
info@mackma.com  
www.mackma.com



## SPECIFICATION

Machine dimensions (cm)	100x24,5x29
Weight (Kgs)	100
Bending force in Tons	20
Tool height in mm.	100
Capacity (Mild Steel Plate)	100x20 (with V width: 150mm)
Electrical supply	220V, 1ph, 50Hz
Motor power (Kw)	0,75



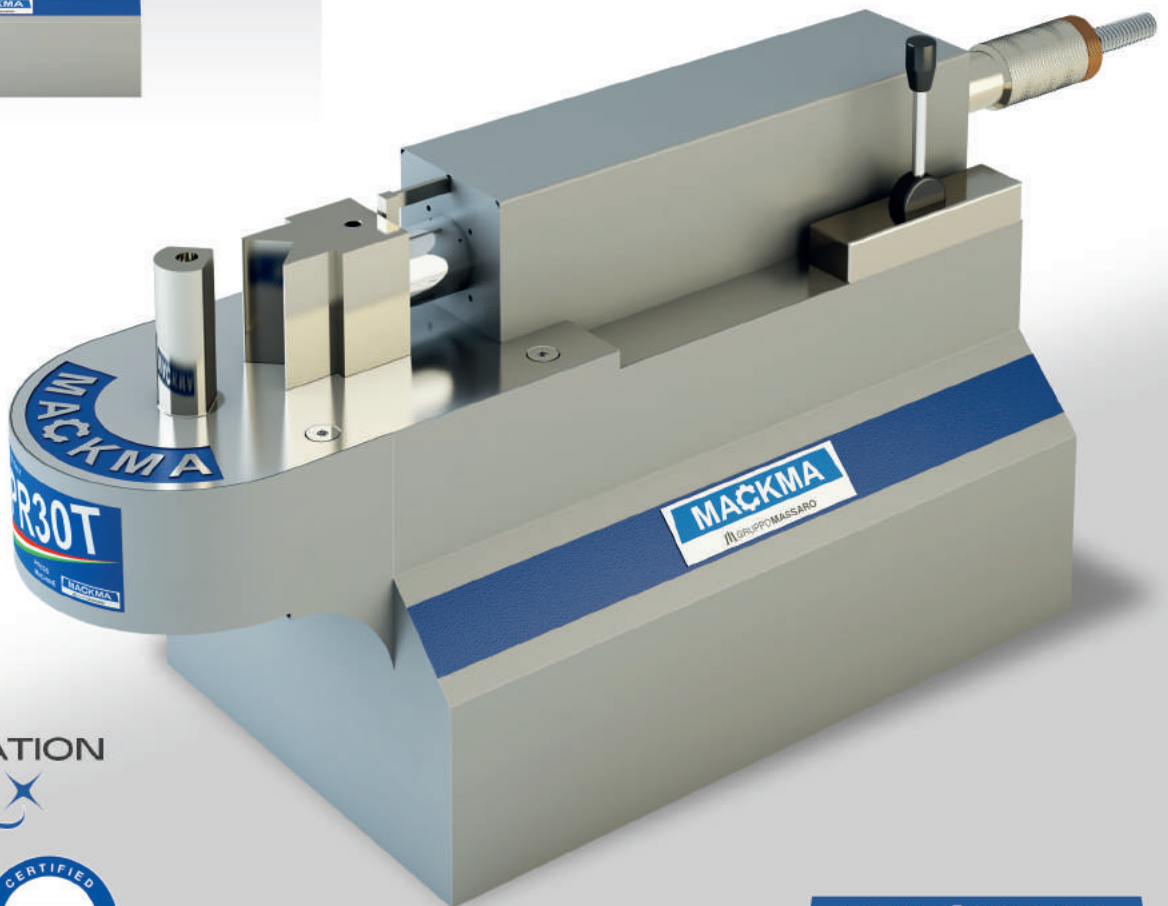
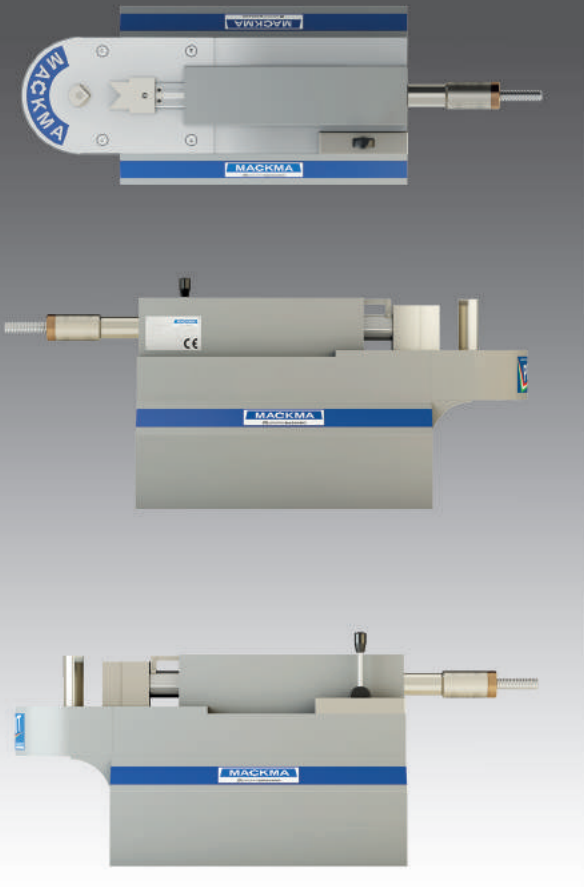
# MACKMA HORIZONTAL PRESS PR30T

A compact 30 Ton, Bench Top Horizontal Press, powered by an efficient, high quality hydraulic pack.

A precision, chromed piston ensures accuracy, with a simple mechanical adjustment of the end stop.

Simple manual control with return spring to the start position.

With a single phase electrical supply, the machine is also a very handy machine for use on site.

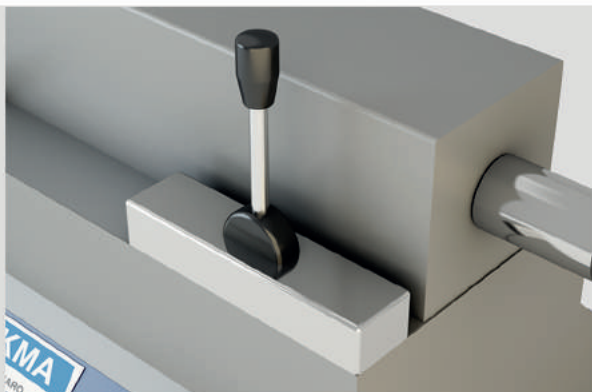


NEW  
GENERATION  
2015

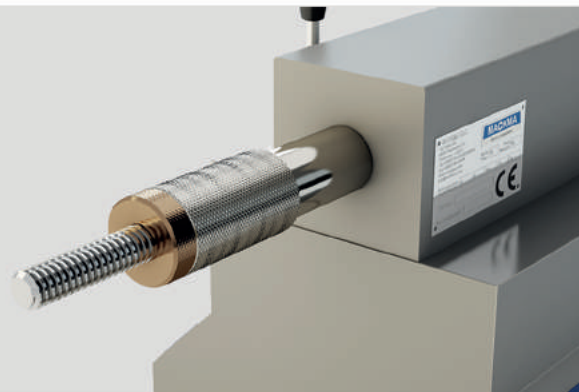


**MACKMA**  
GRUPPO MASSARO

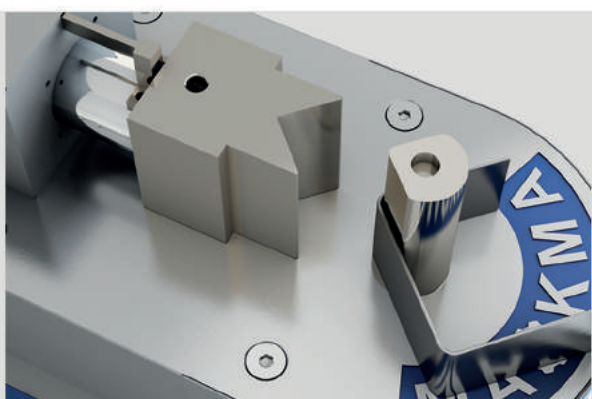
# TECHNICAL FEATURES



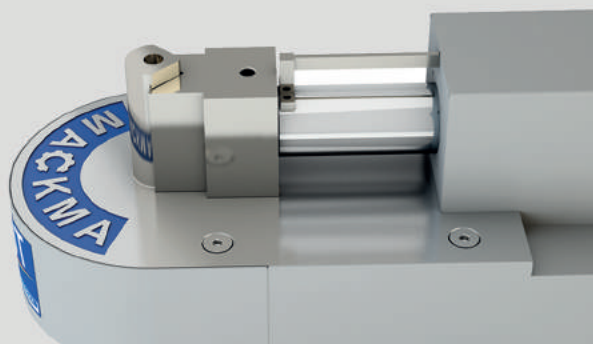
Manual lever control



Simple mechanical locking screw for bend stop position



Typical example of a square shaped component



Processing examples

The image shown above is understood as a preliminary indication. MACKMA reserves the right to change form and function which are used exclusively for innovative improvements.

NEW  
GENERATION  
2015

**MACKMA**

GRUPPO MASSARO

Via Volla snc  
03030 Piedimonte San Germano (FR)  
Tel. +39 0776 404326 - 403489  
Fax +39 0776 403460  
info@mackma.com  
www.mackma.com



## SPECIFICATION

Machine dimensions (cm)	100x24,5x29
Weight (Kgs)	120
Bending force in Tons	30
Tool height in mm.	100
Capacity (Mild Steel Plate)	100x30 (with V width: 200mm)
Electrical supply	220V, 1ph, 50Hz
Motor power (Kw)	0,75





# MACKMA CNC PLASMA CUTTING MACHINE PL10

Cutting area able to take sheet size from  
1000x1000 mm

Robust steel frame

Able to cut metal up to a thickness of 20 mm

Accuracy +/- 0,3 mm

Laptop included

Operating System included



NEW  
GENERATION  
2015



**MACKMA**  
GRUPPO MASSARO

# TECHNICAL FEATURES



Compatibility with all types of generators

Safety emergency stop button on X-axis



Typical example of plasma shapes

The image shown above is understood as a preliminary indication. MACKMA reserves the right to change form and function which are used exclusively for innovative improvements.

NEW  
GENERATION  
2015

**MACKMA**

GRUPPO MASSARO

Via Volla snc  
03030 Piedimonte San Germano (FR)  
Tel. +39 0776 404326 - 403489  
Fax +39 0776 403460  
info@mackma.com  
www.mackma.com

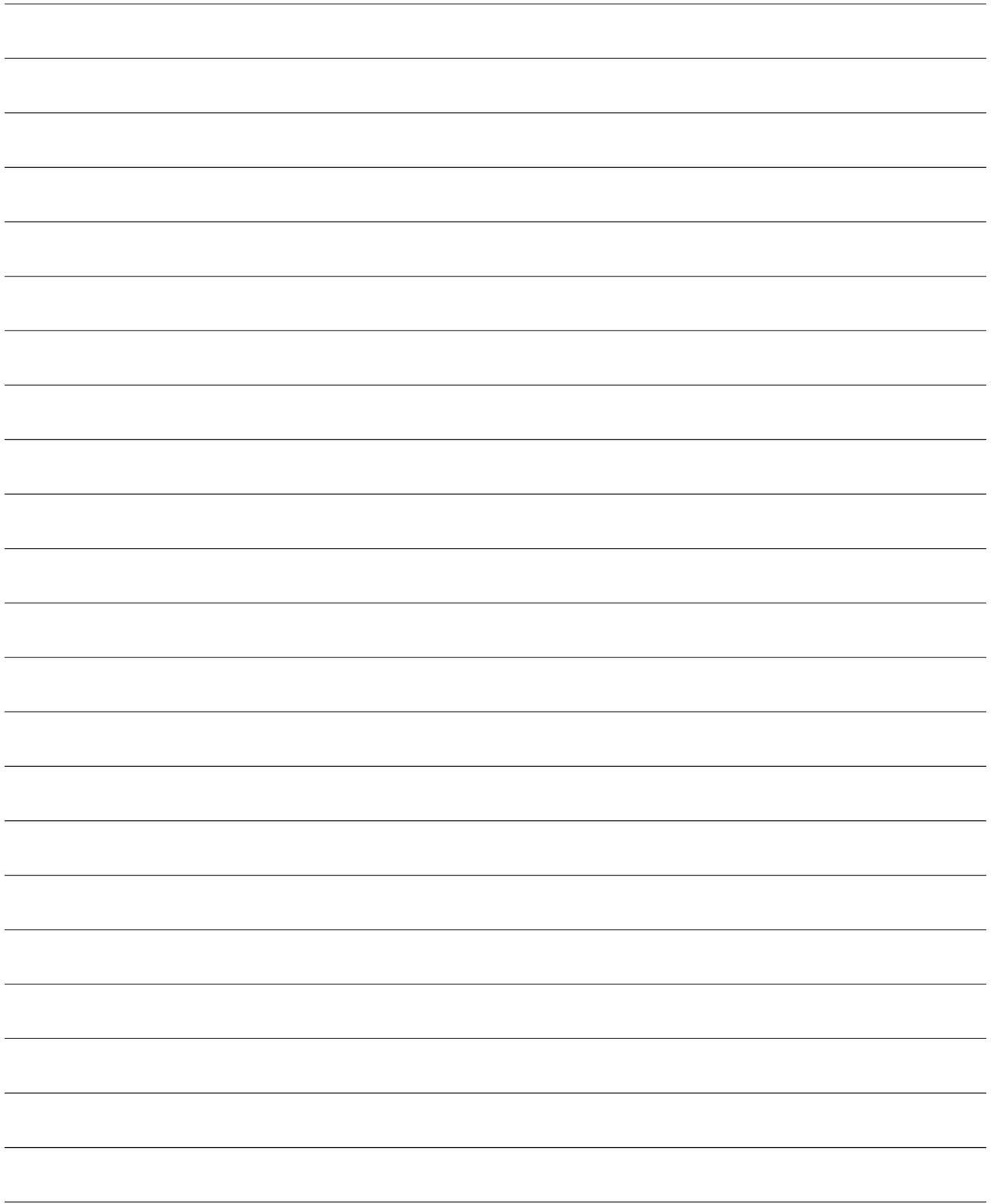


## AVAILABLE STANDARD SIZES:

PL-5:	550X550mm
PL-10:	1050X1050mm
PL-15:	1550X1550mm
PL-15/20:	1550X2050mm
PL-15/30:	1550X3050mm

OTHER SIZES UPON REQUEST







**MAÇKMA®****GRUPPO MASSARO®**

Via Volla snc  
03030 Piedimonte San Germano (FR)  
Tel. +39 0776 404326 - 403489  
Fax +39 0776 403460  
info@mackma.com www.mackma.com

