

**Klauke**

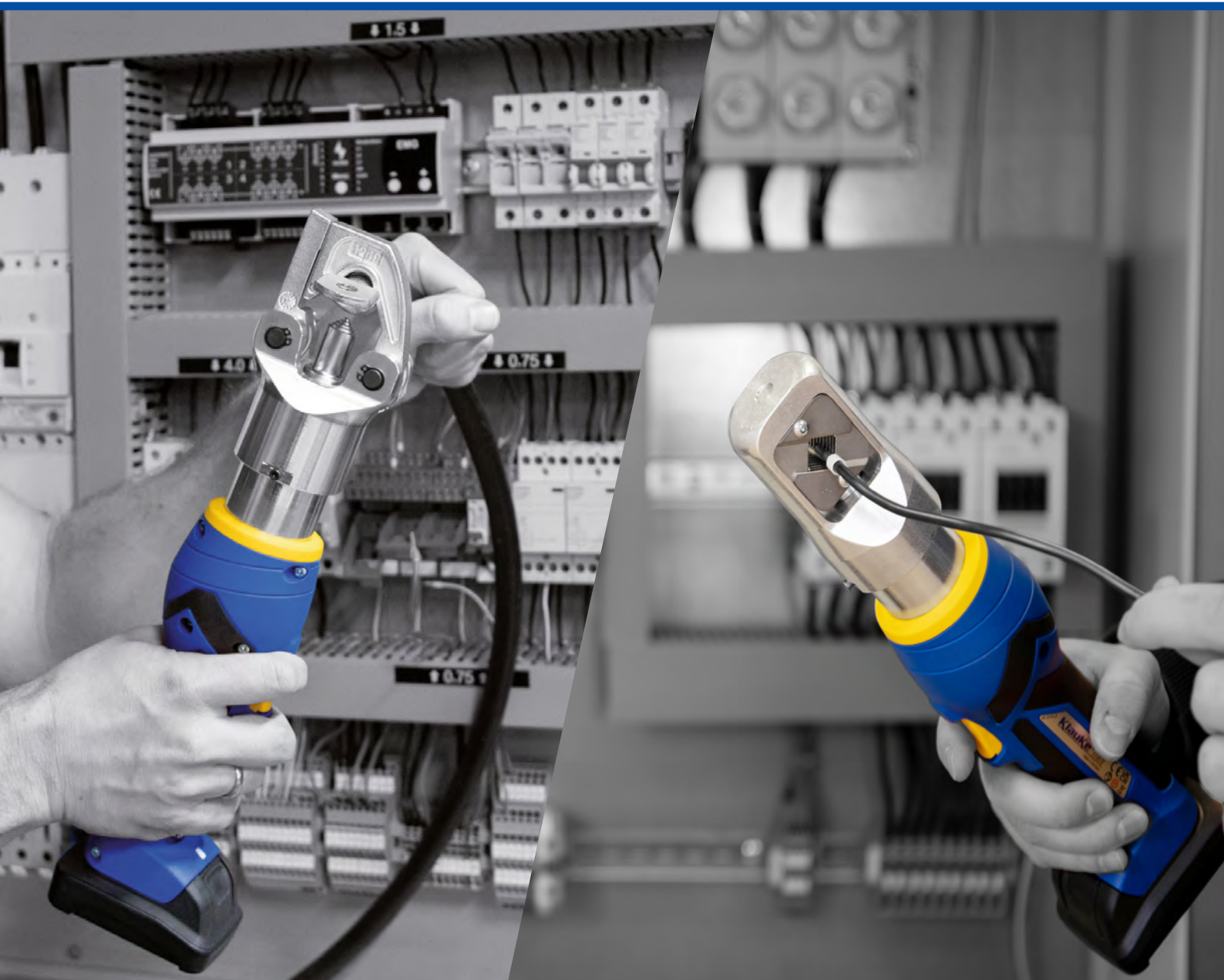
Autorizovaný distributor: [www.klauketools.cz](http://www.klauketools.cz)



**ant Profitools s.r.o.**  
Potrubářské, instalátérské a elektrikářské nářadí

Příkop, 602 00 Brno  
Česká republika

601 222 558  
[info@antprofitools.cz](mailto:info@antprofitools.cz)  
[www.antprofitools.cz](http://www.antprofitools.cz)



# CUT, STRIP, CRIMP, PUNCH – ALL IN ONE

For power panel builders: our panel build pro-package

# EFFICIENT WIRING WITH INNOVATIVE TECHNOLOGY

## Micro I electromechanical crimping tool 0.14 - 50 mm<sup>2</sup> EK 50 ML



FAST, LIGHT AND EFFORT-SAVING - TODAY'S APPROACH TO CRIMPING

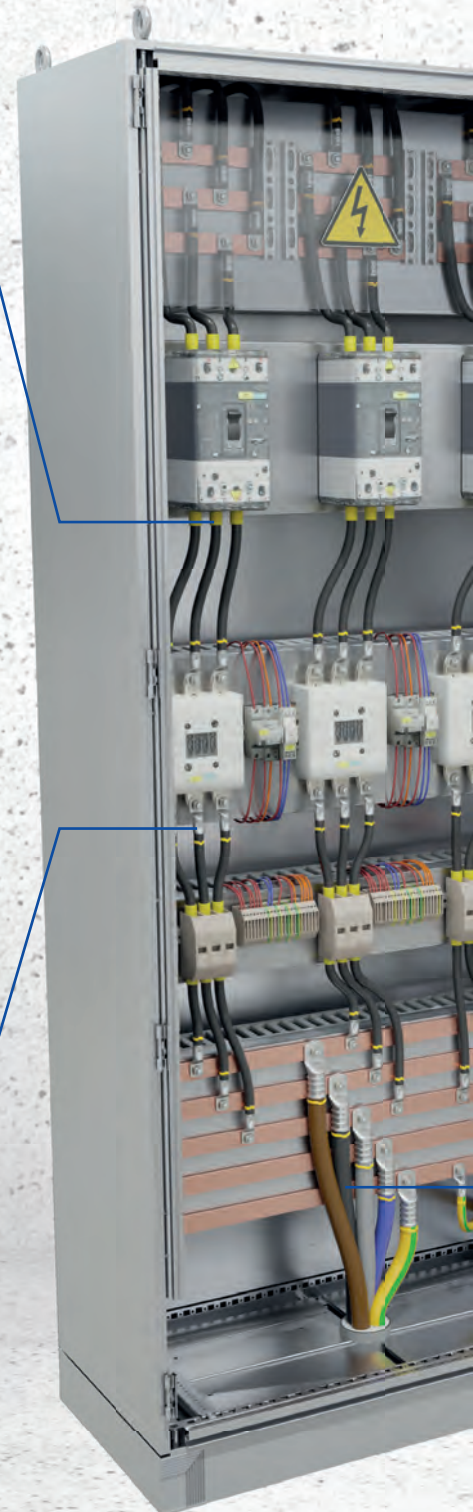
- Revolutionary PowerSense Function
- Manual pre-clamping. Motor-driven crimping.
- Ultra-light and ergonomic
- Weight: 0.96 kg

## Battery-powered hydraulic press tool 6 - 120 mm<sup>2</sup> EK 30 ID ML



SMALL DIE-FREE BATTERY-POWERED HYDRAULIC TOOL

- No die-change thanks to use of indent crimping
- Crimping range 6 - 120 mm<sup>2</sup>
- Weight: 1.95 kg



We now offer efficiency and safety for control panel building as part of an all-inclusive worry-free package. Whether it's cutting, stripping, crimping or punching: our power package has just the tool you need!



**NEW**

**Battery-powered hydraulic press tool for cable end-sleeves 6 - 120 mm<sup>2</sup>**  
EK WF 120 ML



**SIMPLE AND SAFE CRIMPING USING INNOVATIVE TECHNOLOGY**

- Optimum results thanks to square crimping
- Crimping range 6 - 120 mm<sup>2</sup>
- Die-free battery-powered hydraulic tool
- Weight: 1.96 kg



**VDE-standard battery-powered hydraulic cutting tool**  
ESM 50 IS



**IF IT FITS, IT CUTS IT!\***

- Cutting range up to Ø 50 mm
- With integrated voltage protection up to 1,000 V
- Weight: 3.1 kg

\*suitable for multistrand, fine and superfine stranded Cu and Al conductors up to Ø 50 mm as well as solid Cu conductors up to Ø 20 mm and solid Al conductors up to Ø 50 mm. Also suitable for sector shaped conductors, e. g. NYY-J 3x185 SM/95 SM. Not suitable for steel ropes and ACSR lines.

# CONNECTION TECHNOLOGY

## SYSTEM CONNECTIONS.



### Tubular lugs, Cu, standard design 6 - 400 mm<sup>2</sup>, R-series



- For multistrand round conductors, e. g. as per DIN EN 60228 Class 2
- In combination with the EKM 60 ID suitable for fine-stranded conductors
- For round sector shaped conductors



mm <sup>2</sup>	M5	M6	M8	M10	M12	M14	M16	M20
6	1R5	1R6	1R8	1R10	1R12			
10	2R5	2R6	2R8	2R10	2R12			
16	3R5	3R6	3R8	3R10	3R12			
25	4R5	4R6	4R8	4R10	4R12	4R14		
35		5R6	5R8	5R10	5R12	5R14	5R16	
50		6R6	6R8	6R10	6R12	6R14	6R16	6R20
70		7R6	7R8	7R10	7R12	7R14	7R16	7R20
95			8R8	8R10	8R12	8R14	8R16	8R20
120			9R8	9R10	9R12	9R14	9R16	9R20
150			10R8	10R10	10R12	10R14	10R16	10R20
185				11R10	11R12	11R14	11R16	11R20
240				12R10	12R12	12R14	12R16	12R20
300					13R12	13R14	13R16	13R20
400					14R12	14R14	14R16	14R20

### Tubular lugs for switchgear connections, Cu, narrow palm, standard design, 35 - 300 mm<sup>2</sup>



- For multistrand round conductors, e. g. as per DIN EN 60228 Class 2
- In combination with the EKM 60 ID suitable for fine-stranded conductors
- For round sector shaped multistrand conductors
- For terminating in panel board systems with reduced connection area



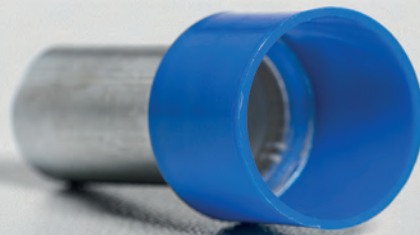
mm <sup>2</sup>	M6	M8	M10	M12	M16
35	5SG6				
50	6SG6	6SG8	6SG10		
70	7SG6	7SG8	7SG10	7SG12	
95	8SG6	8SG8	8SG10	8SG12	
120	9SG6	9SG8	9SG10	9SG12	
150	10SG6	10SG8	10SG10	10SG12	
185			11SG10	11SG12	11SG16
240			12SG10	12SG12	12SG16
300			13SG10	13SG12	13SG16

For ordering information, item numbers  
and further information, visit our website:



For ordering information, item numbers  
and further information, visit our website:





## DIN-compliant insulated cable end-sleeves with Easy Entry 0.5 - 150 mm<sup>2</sup>



- For fine and superfine conductors e. g. as per DIN EN 60228 Class 5 and 6
- Easy Entry insulation for splice-free conductor insertion
- Halogen-free
- Colour coding and dimensions according to DIN 46228 Part 4
- Alternative colour coding available
- Available as version without plastic collar 46228-1 from 0.25 mm<sup>2</sup> to 240 mm<sup>2</sup>



For ordering information, item numbers and further information, visit our website:

## Insulated solderless terminal 0.1 - 6 mm<sup>2</sup>

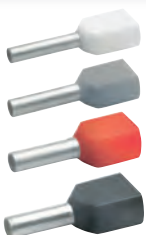


- For fine and superfine conductors e. g. as per DIN EN 60228 Class 5 and 6
- As per DIN 46237
- High-quality brazing procedure in the crimping barrel
- Halogen-free insulating sleeve



For ordering information, item numbers and further information, visit our website:

## Insulated twin cable end-sleeves 2 x 0.25 - 2 x 16 mm<sup>2</sup>



- For fine and superfine conductors e. g. as per DIN EN 60228 Class 5 and 6
- Twin cable entry
- Colour coding in accordance with DIN 46228 Part 4 (0.5 - 16 mm<sup>2</sup>)
- Halogen-free



For ordering information, item numbers and further information, visit our website:

## ST 11 B shaker with insulation Cable end-sleeve 0.5 - 2.5 mm<sup>2</sup>, DIN 46228 Part 4



- Shaker from impact-resistant plastic
- Stackable and reclosable



For ordering information, item numbers and further information, visit our website:

# PRESSING WITH RELIABLE PERFECT CRIMP CONNECTIONS.



## EK 30 ID ML battery-powered hydraulic press tool 6 - 120 mm<sup>2</sup>



- Indent crimping – changing of crimping dies is not necessary
- Powerful 10.8 V Li-ion battery technology with charging level indicator
- Closed head, hinged, swivelling
- Simple and safe: one-button operating concept for controlling all tool functions



See also our explanation video about the EK30IDML at:

## EK WF 120 ML battery-powered hydraulic press tool for cable end-sleeves 6 - 120 mm<sup>2</sup>



- Innovative square crimping – use of crimping dies is not necessary
- Powerful 10.8 V Li-ion battery technology with charging level indicator
- Closed head, swivelling
- Simple and safe: one-button operating concept for controlling all tool functions



See also our explanation video about the EKWF120ML at:

## EKM 60 ID battery-powered hydraulic press tool 10 - 240 mm<sup>2</sup>



- Extra-wide crimping range thanks to innovative 2-stage telescopic cylinders
- Indent crimping – changing of crimping dies is not necessary
- Closed head, hinged, swivelling
- Also available as crimping tool with integrated voltage protection up to 1,000 V (EKM60IDISB / EKM60IDISM)



## EKM 60/22 battery-powered hydraulic press tool 6 - 300 mm<sup>2</sup>



- Large crimping range up to 300 mm<sup>2</sup>
- Closed head, hinged, swivelling
- Also available as crimping tool with integrated voltage protection up to 1,000 V (EKM60IDISB / EKM60IDISM)
- Suitable for swappable series 22 crimping dies



Find out about Klauke Orange Tools in our video:





## EK 35/4 ML battery-powered hydraulic press tool 6 - 150 mm<sup>2</sup>



- Large cross-section range up to 150 mm<sup>2</sup>
- Narrow pressing head - ideal when space is critical
- Powerful 10.8 V Li-ion battery technology with charging level indicator
- Closed head, hinged, swivelling
- Simple and safe: one-button operating concept for controlling all tool functions

## EK 50 ML electromechanical crimping tool 0.14 - 50 mm<sup>2</sup>



- The Klauke micro with its intuitive PowerSense function combines the advantages of manual press tools with the convenience of battery-powered hydraulic press tools
- Excellent crimping results with minimum energy use

Find out about the EK50ML in our product video:



## K 05 Synchro press tool for standard design tubular lugs and connectors, 6 - 50 mm<sup>2</sup>



- Synchronised die change ensures matched sizes
- Cross-section indication on marked adjusting wheel
- Hexagonal crimping
- Also available:
  - K 06 Synchro: 6 - 120 mm<sup>2</sup>
  - K 09 Synchro: 25 - 150 mm<sup>2</sup>

## K 82 A Press tool for insulated conductor connections 0.5 - 6 mm<sup>2</sup>



- With additional locator to ensure a precise crimp connection
- 33 % less effort required
- 3K Comfort handle
- Less effort required thanks to new lever mechanism

## K 30/6 K and K30/4 K Press tools for cable end-sleeves and twin cable end-sleeves 0.08 - 16 mm<sup>2</sup>, hexagonal crimping



- One crimping profile for all cross-sections thanks to automatic cross-section adaptation
- Hexagonal crimping
  - K 30/6 K from 0.08 - 16 mm<sup>2</sup>
- Square crimping
  - K30/4K: 0.08 - 16 mm<sup>2</sup>

## K 32 TWIST-it press tool for cable end-sleeves 0.14 - 10 mm<sup>2</sup> and twin cable end-sleeves 2 x 0.25 - 2 x 4 mm<sup>2</sup>



- Unique long service life
- One crimping profile for all cross-sections thanks to automatic cross-section adaptation
- Quick change between front and side sleeve insertion
- Extremely small, light and ergonomic

# CUTTING SIMPLY EVERYTHING.



## ES 32 F ML / ES 32 ML Battery-powered cutting tool Ø 32 mm



- For cutting fine and superfine copper conductors (ES 32 F ML)
- For cutting multistrand copper and aluminum conductors (ES 32 ML)
- Narrow scissor cutter head - ideal when space is critical
- Powerful 10.8 V Li-ion battery technology with charging level indicator
- Open head, swivelling
- Electronic control and monitoring of the work process

## ESM 50 battery-powered hydraulic cutting tool Ø 50 mm for copper and aluminum conductors



- High cutting force for cutting copper and aluminum conductors (including fine-stranded)
- Time saving when making multiple cuts thanks to return stop
- Open head, swivelling
- Also available as cutting tool with integrated voltage protection up to 1,000 V (ESM50ISB / ESM50ISM)



Find out about Klauke Orange Tools  
in our video:

\* Only for Klauke Orange Tools

## NEXT GENERATION FEATURES

All Next Generation tools have the following functions:





# GENERAL PURPOSE TOOLS THE ALL-ROUNDERS.



## EKM 60 UNV battery-powered hydraulic universal tool 6 - 300 mm<sup>2</sup>



- One head for pressing, cutting, punching – One tool for all occasions
- Ideal for assembly because all common tasks can be performed with just one tool
- Small and narrow, perfect for cramped conditions
- Universal head, hinged, swiveling



## Adapter and dies



Adapter for crimping dies of the series:

**K22**  
SERIE

**K18**  
SERIE

**K5**  
SERIE



Cuttings dies



Additional dies



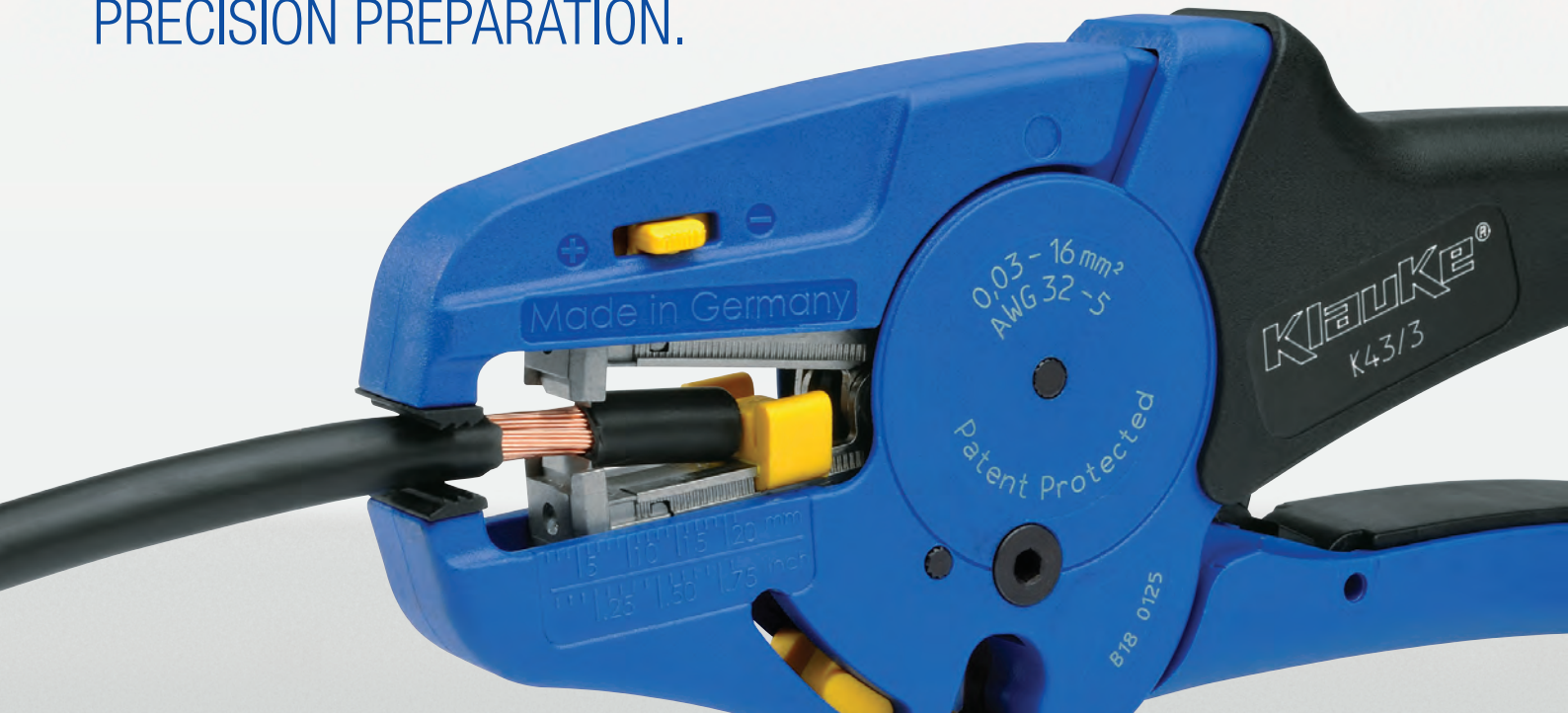
An overview of the adapters, available dies and tool information can be found on our website:



- Select your battery system: Bosch or Makita
- All data is simply read out via Bluetooth (i-press® App)
- LED for lighting up the work area
- Simple and safe: one-button operating concept for controlling all tool functions
- Fatigue-free working thanks to well-balanced center of gravity

- Simple and safe: automatic return after completed work cycle
- Automatic return stop (ARS) for position control during multiple crimping cycles (press tools)
- Manual return stop (MRS) for efficient working (cutting tools)

# STRIPPING PRECISION PREPARATION.



## Stripping tool with continuous stripping range from 0.03 - 16 mm<sup>2</sup>



- First stripping tool with continuous stripping range from 0.03 - 16 mm<sup>2</sup>
- Perfect for damage-free stripping of solid and fine-stranded conductors with PVC insulation
- Fatigue-free working thanks to ergonomic design
- Safe working thanks to integral anti-pinching protection
- Long lasting tool thanks to easily replaceable blades
- Integral wire cutter for up to Ø 9 mm

## K432V Automatic wire strippers, 0.1 - 4 mm<sup>2</sup> K432U Automatic wire strippers, 4 - 16 mm<sup>2</sup>



- Particularly suitable for application-specific conductor types in sectors such as mechanical and plant engineering, wind energy, robotics, eMobility as well as marine applications, shipbuilding, railways and rail transport.
- Self-adjusting cutting and stripping tool for application-specific solid and flexible conductors
- Perfect, light and ergonomic tool with long service life
- No fanning out of the individual conductors - simplifying insertion of the conductor into the cable end-sleeve

## I-PRESS<sup>®</sup> SOFTWARE AND I-PRESS<sup>®</sup> APP

Connectivity is the overall concept for the digital applications that Klauke makes available to its customers to optimize use of its tools. This includes the Klauke i-press<sup>®</sup> Software and i-press<sup>®</sup> App. These applications offer you new possibilities when used with any of the Klauke Next Generation tools.



# SHEET METAL HOLE PUNCH QUICKLY AND CLEANLY.



## LS 50 FLEX battery-powered hydraulic punching tool



- Optimal accessibility thanks to 360° rotating head
- An integrated pressure sensor increases the service life of the hole punch
- Automatic limit stop increases the life of the tools
- Punching capacity:  
St37 max.: 104.8 mm for a material thickness of 2.5 mm  
V2A max.: 50.8 mm for a material thickness of 2.5 mm



## Speed Punch™ sheet metal hole punch system



- Innovative thread-free assembly
- Simplest and quickest handling because screwing on and off of the locknut is unnecessary.
- Punching capacity:  
St 37 material 3.5 mm thick  
16 - 64 mm

For ordering information, item numbers and further information, visit our website:



## LS 100 FLEX battery-powered hydraulic punching tool



- Extremely high punching force - 100 kN
- Optimal accessibility thanks to 360° rotating head
- Automatic limit stop increases the life of the tools
- Punching capacity:  
ST37 max.: 152.4 mm for a material thickness of 3 mm  
V2A max.: 104.8 mm for a material thickness of 3 mm



# CONNECTING TOGETHER

RIDGID

 GREENLEE

Klauke

Receive the latest information about products, services and promotions.  
Register for our newsletter:

[KLAUKE.COM/NEWSLETTER](https://www.klauke.com/newsletter)



Follow us!



Autorizovaný distributor: [www.klauketools.cz](http://www.klauketools.cz)



**ant Profitools s.r.o.**  
Potrubářské, instalatérské a elektrikářské nářadí

Příkop, 602 00 Brno  
Česká republika

601 222 558  
[info@antprofitools.cz](mailto:info@antprofitools.cz)  
[www.antprofitools.cz](http://www.antprofitools.cz)

© 2021 Gustav Klauke GmbH. All rights reserved. The Klauke logo and the Emerson logo are registered trademarks of Emerson Electric Co. or its subsidiaries in the USA and other countries. All other marks belong to their respective owners. Subject to change without notification. BRSCHALTSCHPANK21DE 2.000 09/21 I

**Klauke**

Gustav Klauke GmbH  
Auf dem Knapp 46  
D-42855 Remscheid, Germany

Tel.: +49 (0) 2191 / 907 - 0  
[Klauke-Info@Emerson.com](mailto:Klauke-Info@Emerson.com)  
[Klauke.com](http://Klauke.com)

  
**EMERSON**