

# PROFESSIONAL PIPE CUTTING POWER TOOLS



The Original  
Pipe Cutting System  
made by Exact Tools

Designed in Finland

**exact**  
Pipe Cutting System

# PROFESSIONAL PIPE CUTTING TOOLS FOR DEMANDING CONDITIONS

---

## EXACT'S UNIQUE PIPE CUTTING METHOD

The Exact pipe cutting system is designed and manufactured for professional use. All pipe cutters are lightweight, portable, and easy to operate on-site. Exact pipe saws cut steel, plastic, copper, aluminium, cast iron, stainless steel, and multi-layer pipes. Our product range also features special pipe saws for cutting ventilation pipes, or for cutting and bevelling plastic pipes in a single operation. For over 15 years, many leading brands have used our pipe cutting systems and patented technology globally. Everything you need fits in a handy shoulder bag.

## PERFECTLY CUT ENDS READY TO WELD OR JOIN

The Exact Pipe cutting system delivers the straight and clean-cut ends so important when welding pipes, facilitating their immediate welding or joining by other means. Exact saws are incredibly fast; a Ø170 mm pipe with a 5 mm wall can be cut in less than 20 seconds. Besides its extensive cutting range that enables one person to easily handle large pipes, the Exact method is also fire-resistant, energy-efficient, and safe for the working environment. Join the satisfied group of Exact users.

---

**”** Award winning patented innovations from Finland.

---





PipeCut 170 | PipeCut 170E | PipeCut 220E | PipeCut 280 PS | PipeCut 360 PS | PipeCut AIR 360 | PipeCut V1000 | PipeCut P400

# EXACT PIPE CUTTING SAWS

- Introduction to Exact Tools pipe cutters** ..... page **4**
- PipeCut 170** Lightweight and handy ..... page **6**
- PipeCut 170E** Powerful, lightweight and handy ..... page **7**
- PipeCut 220E** Powerful, plus a wide cutting capacity ..... page **8**
- PipeCut 280 Pro Series NEW** Next generation Exact ..... page **9**
- PipeCut 360 Pro Series NEW** Next generation Exact ..... page **10**
- PipeCut AIR 360 NEW** Pneumatic PipeCut AIR 360 ..... page **11**

# SPECIAL EXACT PIPE CUTTERS

- PipeCut P400** Cut and bevel plastic pipes in one process ..... page **12**
- PipeCut V1000** Innovative spiral duct cutting..... page **13**
- PipeCut+ Bevel 170E** Cut and bevel cast iron with one machine ..... page **14**
- PipeBevel 220E** Excellent bevel results for on-site applications..... page **15**
- PipeBevel 360E** Excellent bevel results for on-site applications..... page **16**

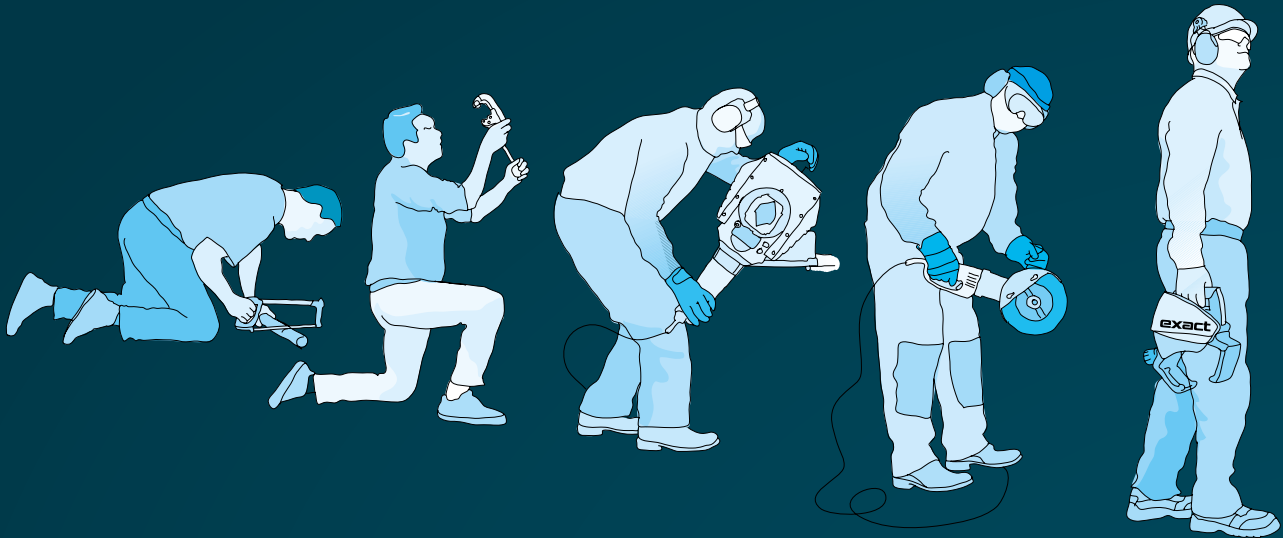
# EXACT PIPE BENCH

- PipeBench 170** Real mate for renovation ..... page **17**

# BLADES & DISCS & TIPS

- Blades and discs for Exact Tools pipe cutters** ..... page **18**

---



# Effective, safe and easy to use

– bringing pipe cutting and finishing into the 21st Century

## EXACT PIPE CUTTING SYSTEM: USER-FRIENDLY INNOVATION

In 2002 Exact Tools introduced an innovative system for cutting and finishing metal, plastic and ventilation pipes. Besides revolutionising the efficiency of pipe cutting, the Exact pipe cutting system's improved safety features and ease of use is raising the bar for modern construction standards.

## RIGHT THE FIRST TIME AND READY FOR USE

The Exact pipe cutting system improves pipe cutting beyond comparison. Not only do Exact pipe cutters complete the work in a fraction of the time taken by alternative methods, but the quality of the finished cut is so clean and straight that normally no extra shaping or reworking is required. The pipe cutters are light and easily carried, enabling the work to be performed wherever it is needed.

## SAFETY BENEFITS ALSO ENHANCE PERFORMANCE AND PRODUCTIVITY

Exact pipe cutters create virtually no sparks when cutting metal pipes. Because the cutting process is a cold cut, the cutting edge/surface does not heat up, avoiding, for example in the case of cast iron pipes, the possibility of damaging the pipe or interior coating. The method is also much safer for workers; pipes can be cut at their installation locations without having to worry about fire hazards or damage to other building materials.



## LIGHT, FAST, EASY – PROVIDING WORKING COMFORT THAT LASTS A LIFETIME

The Exact pipe cutting system eliminates the need to shift heavy tools or pipes into many different positions. Requiring only a gentle and stable rotation, the lightweight and easily handled pipe cutters eliminate the common health risks or physical injuries normally associated with the movement of heavy tools or complicated equipment.

# ” Once you’ve tried Exact, there is no turning back.

– Arttu Starkki, plumber

## INVEST IN COMFORT; INVEST IN YOUR HEALTH

Before the introduction of the Exact pipe cutting system there had been no significant innovations in pipe cutting practices for decades. Workers often had to use an angle grinder that is not only inaccurate but is also a fire hazard.

## SUPERIOR SPEED

In normal on-site working environments, the speed of the Exact pipe cutting system is revolutionary when compared to previous pipe cutting methods.

After cutting, for example with an angle grinder, the pipe often cannot be welded or connected without performing a cumbersome and time-consuming pipe grinding process. Certain Exact pipe cutting models facilitate simultaneous cutting and beveling, leaving a cut surface that is straight, clean and ready to be connected. All Exact models produce a clean-cut surface.

## HOW DO YOU WANT TO WORK?

It's a simple choice. Pipe cutting and finishing can be quick, safe and comfortable. Or it can be slow, heavy and, in the long run, detrimental to your health. Exact Pipe Tools gives everybody that choice, so don't suffer in silence. The Exact pipe cutting system offers innovative tools for the cutting and finishing of metal, plastic, and ventilation pipes. All Exact tools are characterised by their quick operation, light weight, and sophisticated ease of use.

Exact Tools pipe saws can make 10 clean pipe cuts during the time it takes an angle grinder to produce one rough cut.



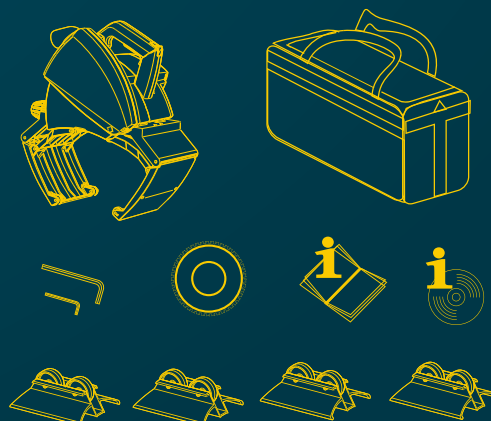
VS



## EVERYTHING YOU NEED IN ONE SHOULDER BAG

### The PipeCut system is supplied complete with:

1. Exact shoulder bag.
2. Exact PipeCut or PipeBevel machine.
3. Pipe supports (not included with V1000).
4. Operating instructions manual.
5. Allen keys fitted to the machine.
6. TCT blade fitted to the Pipe Cut machine.
7. DVD video containing operating instructions and demonstrations.





# PipeCut 170

*Lightweight and handy*

## WEIGHT

**5.7  
kg**

## RANGE OF USE



**15MM – 170MM**

## MAX PIPE WALL

**STEEL  
6MM**

**PLASTIC  
14MM**

## SUITABLE FOR

**ALL  
MATERIALS**

## VOLTAGE

**220–240V/50–60 Hz**



## PipeCut 170

Voltage/Power/Current	220–240 V   1010 W   4.7 A
No-Load speed	4000 r/min
Blade diameter	140 mm
Mounting bore	62 mm
Automatic fuse	

### Lightweight and handy PipeCut 170

With an extensive cutting range and a weight of only 5.7 kg, the PipeCut 170 can be used for cutting metal and plastic pipes. Its light weight, ease of use, and extremely fast cutting speed also makes it an excellent choice for cutting steel and cast iron pipes.

### PRICE INCLUDES:

PipeCut 170 pipe saw, TCT 140 blade, shoulder bag, pipe support x4, instructions, allen keys 5 mm & 2 mm, DVD video.



BLADES & DISCS FOR PipeCut 170 – see more on page 19

[www.exacttools.com](http://www.exacttools.com)

**exact**  
Pipe Cutting System



# PipeCut 170E

*Powerfull and lightweight*

## WEIGHT

**5.7  
kg**

## RANGE OF USE



**15MM – 170MM**

## MAX PIPE WALL

**STEEL  
8MM**

**PLASTIC  
14MM**

## SUITABLE FOR

**ALL  
MATERIALS**

## VOLTAGE

**110–120V/50–60 Hz  
220–240V/50–60 Hz**



## PipeCut 170E

<b>I Voltage/Power/Current</b>	<b>220–240 V   1200 W   5.6 A</b>
<b>II Voltage/Power/Current</b>	<b>110–120 V   1010 W   9.2 A</b>
<b>No-Load speed</b>	<b>1600–3500 r/min</b>
<b>Blade diameter</b>	<b>140 mm</b>
<b>Mounting bore</b>	<b>62 mm</b>
<b>Speed preselection</b>	

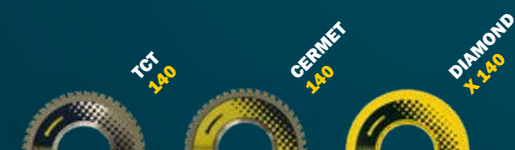
### Powerful, lightweight and handy PipeCut 170E

Offering peak performance for pipe fabrication professionals, the adjustable speed and steady torque features of the PipeCut 170E makes it ideal for cutting metal, plastic, stainless steel, and cast iron pipes.



### PRICE INCLUDES:

PipeCut 170E pipe saw, TCT 140 blade, shoulder bag, pipe support x4, instructions, allen keys 5 mm & 2 mm, DVD video.



BLADES & DISCS FOR PipeCut 170E – see more on page 19

[www.exacttools.com](http://www.exacttools.com)

**exact**  
Pipe Cutting System





# PipeCut 220E

**Wide cutting capacity**

## WEIGHT

**6**  
kg

## RANGE OF USE



**15MM – 220MM**

## MAX PIPE WALL

**STEEL**  
**8MM**

**PLASTIC**  
**14MM**

## SUITABLE FOR

**ALL**  
MATERIALS

## VOLTAGE

**110–120V/50–60 Hz**  
**220–240V/50–60 Hz**



## PipeCut 220E

<b>I Voltage/Power/Current</b>	<b>220–240 V   1200 W   5.6 A</b>
<b>II Voltage/Power/Current</b>	<b>110–120 V   1010 W   9.2 A</b>
<b>No-Load speed</b>	<b>1600 – 3500 r/min</b>
<b>Blade diameter</b>	<b>140 mm</b>
<b>Mounting bore</b>	<b>62 mm</b>
<b>Speed preselection</b>	

### Power, plus a wide cutting capacity with PipeCut 220E

The PipeCut 220E can be used for cutting metal and plastic pipes; the machine's adjustable motor speed, constant torque, and robust design make it an ideal choice for a multitude of pipe cutting applications in workshops or at job sites.



### PRICE INCLUDES:

PipeCut 220E pipe saw, TCT 140 blade, shoulder bag, pipe support x4, instructions, allen keys 5 mm & 2 mm, DVD video.

BLADES & DISCS FOR PipeCut 220E – see more on page 19

[www.exacttools.com](http://www.exacttools.com)

**exact**  
Pipe Cutting System



**NEW**



# PipeCut 280 Pro Series *Next generation Exact*

## WEIGHT

**15.5  
kg**

## RANGE OF USE

**50MM – 280MM**

## MAX PIPE WALL

**STEEL  
20MM**

**PLASTIC  
45MM**

## SUITABLE FOR

**ALL  
MATERIALS**

## VOLTAGE

**110–120V/50–60 Hz  
220–240V/50–60 Hz**



## PipeCut 280 Pro Series

<b>I Voltage/Power/Current</b>	<b>230 V   2500 W</b>
<b>II Voltage/Power/Current</b>	<b>110 –120V   2200 W</b>
<b>No-Load speed</b>	<b>1 = 1900 r/min 2 = 2900 r/min</b>
<b>Blade diameter</b>	<b>165 mm</b>
<b>Mounting bore</b>	<b>62 mm</b>
<b>Speed preselection</b>	

### Next generation Exact PipeCut 280 Pro Series

A significantly improved pipe saw with advanced features, the new Pro Series 280 is equipped with a powerful 2500W motor in the 230V version and completely renewed electronic overload protection. User friendliness, efficiency, and precision have been improved with a traffic light system enabling the user to cut pipes at the correct travel speed, as well as a laser indicator and an updated adjustment mechanism. The machine's advanced features, including significantly extended lifetimes for stainless steel and acid-proof stainless steel saw blades, let you cut steel pipes with wall thicknesses up to 20 mm. Pipe cutting is now easier than ever.

### PRICE INCLUDES:

PipeCut 280 Pro Series pipe saw, TCT 165 blade, shoulder bag, pipe support x4, instructions, allen keys 5 mm & 2 mm, DVD video.



BLADES & DISCS FOR PipeCut 280 Pro Series – see more on page 19

**www.exacttools.com**

**exact**  
Pipe Cutting System



**NEW**



# PipeCut 360 Pro Series *Next generation Exact*

## WEIGHT



17.5  
kg

## RANGE OF USE



75mm – 360mm

## MAX PIPE WALL



STEEL  
20mm



PLASTIC  
50mm

## SUITABLE FOR

**ALL**  
MATERIALS

## VOLTAGE

110–120V/50–60 Hz  
220–240V/50–60 Hz



## PipeCut 360 Pro Series

I Voltage/Power/Current	230 V   2500 W
II Voltage/Power/Current	110–120 V   2200 W
No-Load speed	1 = 1900 r/min 2 = 2900 r/min
Blade diameter	165 mm
Mounting bore	62 mm
Speed preselection	

### Next generation Exact PipeCut 360 Pro Series

Extremely safe to use, this is the perfect machine for large, medium or small heavy-duty pipe materials when you need quick and effortless straight pipe cuts. The significantly improved features of the new Pro Series 360 pipe saw include a powerful 2500W motor in the 230V version and completely renewed electronic overload protection. User friendliness, efficiency, and precision have been improved with a traffic light system enabling the user to cut pipes at the correct travel speed, as well as a laser indicator and an updated adjustment mechanism. The machine's advanced features, including significantly extended life-times for stainless steel and acid-proof stainless steel saw blades, lets you cut steel pipes with wall thicknesses up to 20 mm.

### PRICE INCLUDES:

PipeCut 360 Pro Series pipe saw, TCT 165 blade, shoulder bag, pipe supports 2 single 1 double, instructions, allen keys 5 mm & 2 mm, DVD video.



BLADES & DISCS FOR PipeCut 360 Pro Series – see more on page 19

[www.exacttools.com](http://www.exacttools.com)

**exact**  
Pipe Cutting System



**NEW**

# PipeCut AIR 360

## Pneumatic PipeCut AIR 360

### WEIGHT



### RANGE OF USE



### MAX PIPE WALL



### SUITABLE FOR

**ALL  
MATERIALS**

**PNEUMATIC**



**For greater cutting depth** there is an option to purchase 180 mm blades. Available models: **Diamond X 180** – cast iron, **Cermet 180** – stainless steel, carbon steel, **ALU 180** – plastics and aluminium.

## PipeCut AIR 360

Power	4.6 HP   3.4 kW
Required air pressure	6 bar / 90 psi
Blade diameter	165 mm
Mounting bore	62 mm
Required air pressure	6 bar / 90 psi

### Pneumatic PipeCut AIR 360

The Exact PipeCut AIR 360 SAW has been designed to cut assembled pipes in a fixed position full of water which in many instances is under pressure. By using compressed air it guarantees safety in wet conditions and AIR 360 SAW can be used in all wet environments where electric power tools are not suitable. AIR 360 SAW is extremely powerful when it is used with the correct air flow and pressure, it cuts large dimensions of cast iron pipes easily, fast and very importantly safely. The Exact PipeCut AIR 360 SAW can also be used to cut pre-assembled pipes by using the pipe supports supplied in the same way as used with our existing pipe saws.

### PRICE INCLUDES:

PipeCut AIR 360 pipe saw, oil funnel, allen key, blade wrench with oil tank piston stick, manual.

*THE BLADE is separate and compulsory accessory.*

BLADES & DISCS FOR PipeCut AIR 360 – see more on page 19

[www.exacttools.com](http://www.exacttools.com)

**exact**  
Pipe Cutting System



# PipeCut P400

*Cut and bevel plastic pipes*

**WEIGHT**



**RANGE OF USE**



**MAX PIPE WALL**



**SUITABLE FOR**

**PLASTIC  
PIPES**

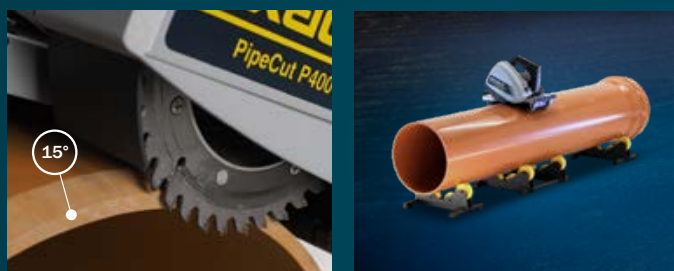
**VOLTAGE**

**110 – 120V/50–60 Hz**  
**220 – 240V/50–60 Hz**



## PipeCut P400

<b>I Voltage/Power/Current</b>	<b>220 – 240 V   1010 W   4.7 A</b>
<b>II Voltage/Power/Current</b>	<b>110 – 120 V   950 W   8.4 A</b>
<b>No-Load speed</b>	<b>4000 r/min</b>
<b>Blade diameter</b>	<b>148   150 mm</b>
<b>Mounting bore</b>	<b>62 mm</b>
<b>Automatic fuse</b>	



### Cut and bevel plastic pipes in one process

All you need to do in this unique method for plastic pipe installations is cut around a pipe; you get a clean 15° bevel at the same time. You can use the PipeCut P400 saw for cutting only or for bevelling plastic pipes.



### PRICE INCLUDES:

PipeCut P400 pipe saw, TCT P150 blade, Cut & Bevel blade, pipe supports 2 single 1 double, shoulder bag, instructions, allen key 5 mm, DVD video.

BLADES & DISCS FOR PipeCut P400 – see more on page 19

[www.exacttools.com](http://www.exacttools.com)

**exact**  
Pipe Cutting System



# PipeCut V1000 *A new era for spiral duct cutting*

## WEIGHT

**6**  
kg

## RANGE OF USE

**75 mm – 1000 mm**

## MAX PIPE WALL

**SPIRAL**  
**1.5 mm**

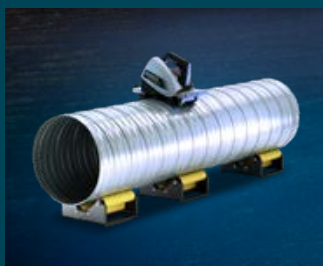
**SEAM.**  
**6 mm**

## SUITABLE FOR

**VENTILATION**  
**PIPES**

## VOLTAGE

**110–120 V**/50–60 Hz  
**220–240 V**/50–60 Hz



## PipeCut V1000

<b>I Voltage/Power/Current</b>	<b>220–240 V   1010 W   4.7 A</b>
<b>II Voltage/Power/Current</b>	<b>110–120 V   950 W   8.4 A</b>
<b>No-Load speed</b>	<b>4000 r/min</b>
<b>Blade diameter</b>	<b>155 mm</b>
<b>Mounting bore</b>	<b>65 mm</b>
<b>Automatic fuse</b>	

### A new era for spiral duct cutting

The Exact Pipe Cut V1000 offers ease of use and a huge size range for cutting spiral ducts. The cut ends are straight and ready to be connected. Special pipe supports for the V1000, capable of holding spiral ducts from 75 mm–1000 mm, can be provided as an optional extra.

### PRICE INCLUDES:

PipeCut V1000 pipe saw, Cermet V155 blade, shoulder bag, instructions, allen keys 5 mm & 2 mm, DVD video.

*OPTIONAL EXTRA: 3 pipe supports*



BLADE FOR PipeCut V1000 – see more on page 19

[www.exacttools.com](http://www.exacttools.com)

**exact**  
Pipe Cutting System





# PipeCut+Bevel 170E

**Cut and bevel cast iron with one machine**

## WEIGHT

**5.7 kg**

## RANGE OF USE



**15 mm – 170 mm**

## MAX PIPE WALL

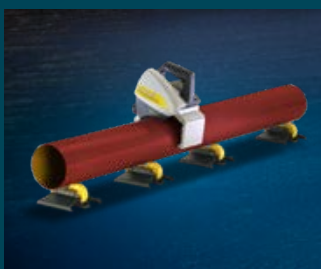
**CAST IRON  
8 mm**

**PLASTIC  
14 mm**

**SUITABLE FOR  
CAST IRON  
AND PLASTIC  
PIPES**

## VOLTAGE

**110–120 V/50–60 Hz  
220–240 V/50–60 Hz**



## PipeCut+Bevel 170E

<b>I Voltage/Power/Current</b>	<b>220–240 V   1200 W   5.6 A</b>
<b>II Voltage/Power/Current</b>	<b>110–120 V   1010 W   9.2 A</b>
<b>No-Load speed</b>	<b>1600 – 3500 r/min</b>
<b>Blade diameter</b>	<b>140 mm</b>
<b>Mounting bore</b>	<b>62 mm</b>
<b>Speed preselection</b>	

### Cut and bevel cast iron with one machine

PipeCut+Bevel 170E does something that a portable power tool has never done before: Cuts and bevels cast iron pipes in one process due to cleverly designed diamond disc. You can adjust it to make correct 15 degree bevel to all commonly used pipe dimensions. When you need to connect pipes with socket joints PipeCut+Bevel 170E saves time and money and prevents the leaks in the connected pipes. It is suitable also to PVC and other plastic pipes.

### PRICE INCLUDES:

PipeCut+Bevel 170E pipe saw, Diamond Cut+Bevel disc, shoulder bag, pipe support x4, instructions, allen keys, DVD-video.



BLADES & DISCS FOR PipeCut+Bevel 170E – see more on page 19

[www.exacttools.com](http://www.exacttools.com)

**exact**  
Pipe Cutting System





# PipeBevel 220E

**Excellent bevel results  
for on-site applications**

## WEIGHT



**6.7  
kg**

## RANGE OF USE



**25MM – 220MM**

## MAX PIPE WALL



**10MM**

## SUITABLE FOR

**STEEL**  
ALUMINIUM AND  
STAINLESS STEEL

## VOLTAGE



**220 – 240V/50 – 60 Hz**



## PipeBevel 220E

<b>Voltage/Power/Current</b>	<b>220 – 240 V   1400 W   6.1 A</b>
<b>No-Load speed</b>	<b>7000–10 500 r/min</b>
<b>Blade holder diameter</b>	<b>48 mm</b>
<b>Different bevel angles</b>	<b>30°   37.5°   45°</b>
<b>Speed preselection</b>	

### Professional Pipe Beveller for on-site welding applications

Continuous good results for on-site pipe beveling applications with Exact's PipeBevel you can easily make fast and accurate welding bevels to pipes in a variety of materials. The user interface of the machine is similar to Exact pipe saws, which makes it easy for the operator to adapt after cutting the pipe with any Exact pipe saw. The cutting head of the beveller has 3 cutting tips, each of them having 4 cutting edges to rotate once becoming blunt, so it is economical to use. The cutting heads are available in most commonly used bevel angles (30°, 37.5° and 45°), and 'tailored' bevel angles can be made if required. A stopper feature also enables the operator to make similar additional bevels to the same pipe O/D.

### PRICE INCLUDES:

PipeBevel 220E beveller, shoulder bag, pipe support x2, instructions, allen key 5 mm, DVD video. **THE CUTTING HEAD and BEVEL TIPS are separate compulsory accessories.**

TIPS FOR PipeBevel 220E – see more on page 19

**www.exacttools.com**

**exact**  
Pipe Cutting System

# PipeBevel 360E

**Excellent bevel results  
for on-site applications**

## WEIGHT

**11.7**  
kg

## RANGE OF USE

**110MM – 360MM**

## MAX PIPE WALL

**10MM**

## SUITABLE FOR

**STEEL**  
ALUMINIUM AND  
STAINLESS STEEL

## VOLTAGE

**220–240V/50–60 Hz**



## PipeBevel 360E

Voltage/Power/Current	220–240 V   1400 W   6.1 A
No-Load speed	7000–10 500 r/min
Blade holder diameter	48 mm
Different bevel angles	30°   37.5°   45°
Speed preselection	

### Professional Pipe Beveller for on-site welding applications

Continuous good results for on-site pipe beveling applications with Exact's PipeBevel you can easily make fast and accurate welding bevels to pipes in a variety of materials. The user interface of the machine is similar to Exact pipe saws, which makes it easy for the operator to adapt after cutting the pipe with any Exact pipe saw. The cutting head of the beveller has 3 cutting tips, each of them having 4 cutting edges to rotate once becoming blunt, so it is economical to use. The cutting heads are available in most commonly used bevel angles (30°, 37.5° and 45°), and 'tailored' bevel angles can be made if required. A stopper feature also enables the operator to make similar additional bevels to the same pipe O/D.

### PRICE INCLUDES:

PipeBevel 360E beveller, shoulder bag, pipe support x2, instructions, allen key 5 mm, DVD video. **THE CUTTING HEAD and BEVEL TIPS are separate compulsory accessories.**

TIPS FOR PipeBevel 360E – see more on page 19

[www.exacttools.com](http://www.exacttools.com)

**exact**  
Pipe Cutting System





#### PipeBench 170 Cutting Set

- ✓ PipeBench 170 (1pc)
- ✓ Pipe Support (4pcs)
- ✓ Tool Bag (1pc)

## PipeBench 170

*Real mate for renovation*

A real mate at renovation sites, the PipeBench 170 is also extremely handy for on-site pipe assembly jobs. It is lightweight and easy to carry wherever you need to work with pipes. A useful shoulder bag for carrying accessories and tools is provided.



### Pipe Bench 170

Weight	12.1 kg (26.1 lbs)
Length	1180 mm – 2510 mm (46.5" – 98.8")
Height	700 mm (27.5")
Working height	875 mm – 1030 mm (34.4" – 40.5")
Capacity	OD 15 mm – 170 mm (0.6" – 6.7")
Max load	100 kg (220 lbs)
Max pipe length	3000 mm (120")
Material	Steel, Aluminium, Plastic

#### PipeBench accessories

1. The Pipe Support aligns the pipe properly and lets it turn as it is being cut; cutting takes place midway between 2 pairs. Max OD 170 mm.
2. The Chain Vice grips the pipe firmly, for example when making a thread or welding components.
3. The Chip Tray keeps the working area tidy, collecting most of the chips when sawing or threading metal and plastic pipes.
4. The Work Table is used during different work stages; holes can be drilled for installing a vise. Dim: 400 mm x 250 mm.



## Blades & Discs

**Exact has a wide range of specially designed saw blades and diamond discs for Exact PipeCut saws.** High quality cutting blades/discs are designed for different purposes and for different PipeCut machines.

### TCT BLADES

Blades with tungsten carbide tips for general use. Suitable for cutting steel, copper, aluminium and plastic.

### CERMET BLADES

Blades with ceramic tips for heavy duty applications, especially for cutting stainless steel and acid proof steel.

### DIAMOND DISCS

Heavy duty special diamond discs only to be used for cutting cast iron pipes.





## BLADES & DISCS 140 for PipeCut models 170, 170C&B, 170E, 220E

	BLADE/DISCS DIMENSIONS (MM)						SUITABLE WITH
	Ø	BORE	KERF	BODY	TEETH	PIPE MATERIAL	
TCT 140	140	62	1.8	1.4	46	Steel, Copper, Plastics	PC 170, 170E, 220E
TCT Z140	140	62	1.8	1.4	38	Steel, Copper, Plastics	PC 170, 170E, 220E
CERMET 140	140	62	1.8	1.4	46	Steel, Stainless Steel, Copper, Plastics	PC 170, 170E, 220E
CERMET 140 THIN	140	62	1.4	1.2	46	Steel, Stainless Steel, Copper, Plastics	For special application
DIAMOND X140	140	62	2.7	1.5	–	Cast Iron, Ductile (nodular cast iron)	PC 170, 170E, 220E
ALU 140	140	62	2.5	1.8	36	Aluminium	PC 170, 170E, 220E

## BLADES & DISCS 165 for PipeCut models PC280PS, PC360PS, PC AIR 360

	BLADE/DISCS DIMENSIONS (MM)						SUITABLE WITH
	Ø	BORE	KERF	BODY	TEETH	PIPE MATERIAL	
TCT 165	165	62	1.8	1.4	52	Steel, Copper, Plastics	PC280PS, PC360PS
CERMET 165	165	62	1.8	1.4	52	Steel, Stainless Steel, Copper, Plastics	PC280PS, PC360PS
DIAMOND X165	165	62	2.7	1.5	–	Cast Iron, Ductile (Nodular Cast Iron)	PC280PS, PC360PS
ALU 165	165	62	2.5	1.8	42	Aluminium	PC280PS, PC360PS
DIAMOND Cut+Bevel	165	62	3.1	2	0	Cast Iron, Ductile (Nodular Cast Iron)	PC280PS, PC360PS, PC AIR 360

## BLADES 180 for PipeCut model AIR 360, PC360PS

	BLADE/DISCS DIMENSIONS (MM)						SUITABLE WITH
	Ø	BORE	KERF	BODY	TEETH	PIPE MATERIAL	
ALU 180	180	62	2.7	1.8	46	Aluminium, Plastics	PC AIR 360, PC360PS
CERMET 180	180	62	2.7	1.8	46	Steel, Stainless Steel	PC AIR 360, PC360PS
DIAMOND X180	180	62	2.7	1.5	–	Cast Iron	PC AIR 360, PC360PS

## SPECIAL BLADES & TIPS for PipeCut models P400, V1000 and for PipeBevel models 220E, 360E

	BLADE/DISCS DIMENSIONS (MM)						SUITABLE WITH
	Ø	BORE	KERF	BODY	TEETH	PIPE MATERIAL	
CERMET V155	155	65	1.6	1.4	58	Thin wall ventilation pipes	PC V1000
TCT P150	150	62	1.8	1.4	40	Plastics (PE, PP, PVC and similar)	PC P400
CUT+BEVEL	148	62	2/30		40/8	Plastics (PE, PP, PVC and similar)	PC P400
CUT+BEVEL DIAM.	140	62	3.3	2	–	Cast Iron, Plastics	PC Cut+Bevel 170E
PIPEBEVEL TIPS STAINLESS						Steel, Aluminium, Stainless Steel	PipeBevel 220E, PipeBevel 360E

**BLADES & DISCS 165 are suitable for our former models:** ☺ Exact PipeCut 280E, 360E, 410E **BLADES & DISCS 140 are suitable for our former models:** ☺ Exact PipeCut 200, 220U, 360, 360U **BLADES & DISCS 140 are suitable for our former private label customer's pipe saws:** ☺ Orbitalum +GF+ SCORP: 170, 170E, 220Plus, 360 | ☺ Rothenberger PipeCut: 170, 170E, 200, 360 | ☺ T-Drill PCS: 6, 8+, 14 | ☺ Victaulic PIPECUT. 170, 200, 360

## The Original

Pipe Cutting System  
made by Exact Tools

Designed in Finland



SEE VIDEOS  
AND MORE

**exact**  
Pipe Cutting System

IMPORTER

DISTRIBUTOR